

- Only VDR/SVDR maker who produces both FFC and FPC by self
- Real monitoring software available for easy check
- Flexible configuration for either VDR or SVDR
- Linux O/S used in firmware of VDR system
- Large size color LCD with touch screen operation
- Type approval with DNV-GL (MED), CCS, RS and VR



FFC



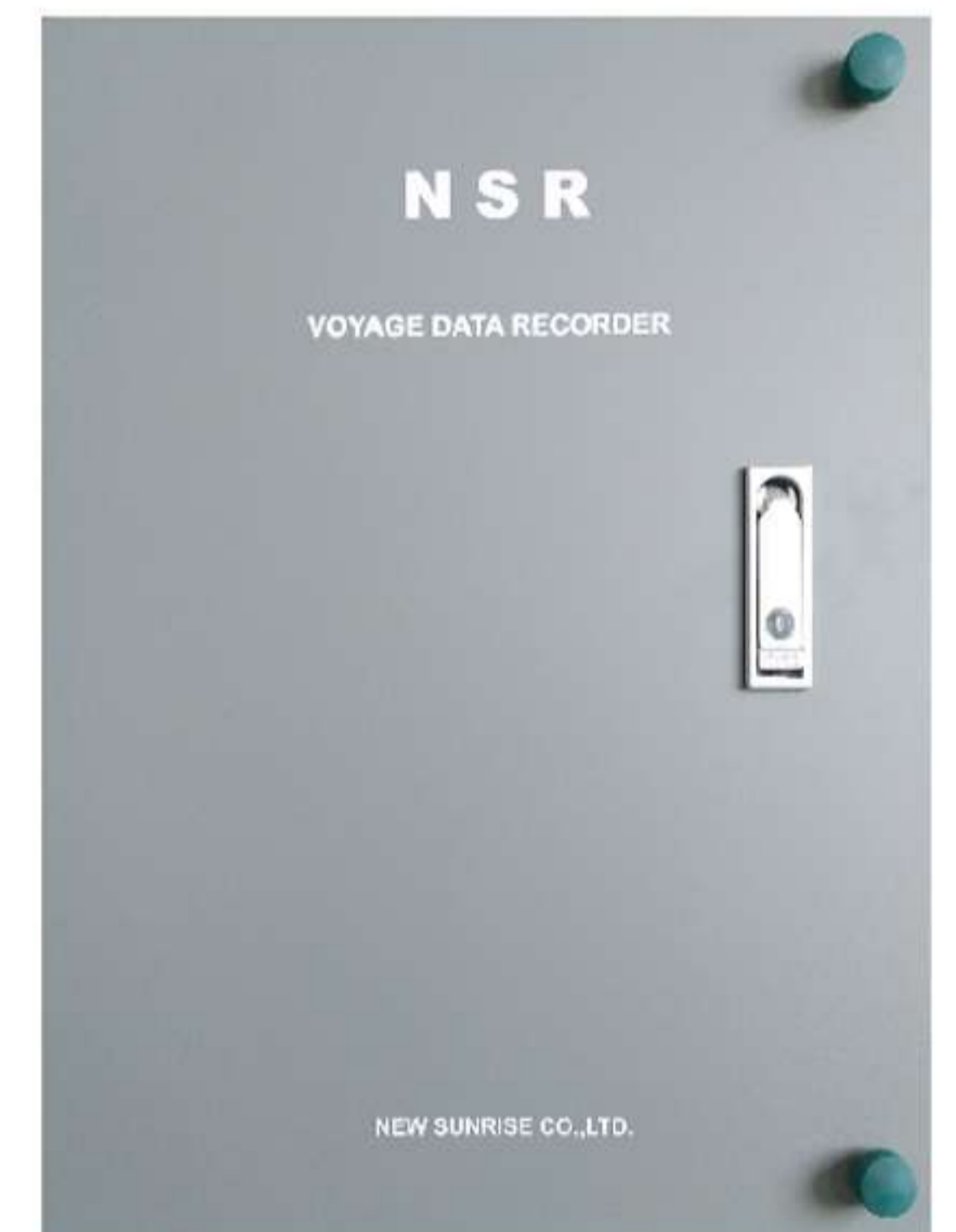
RAU



FPC

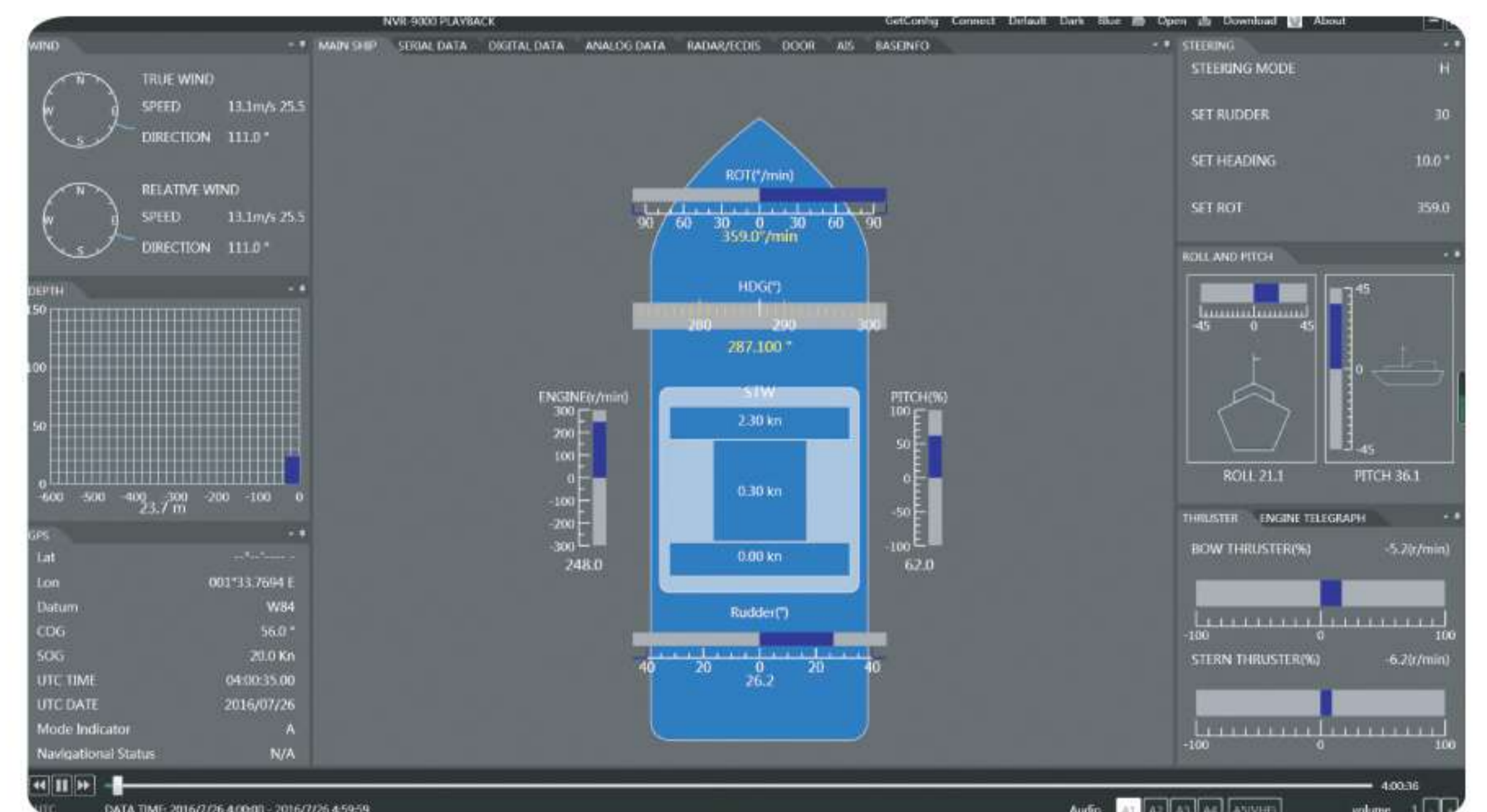
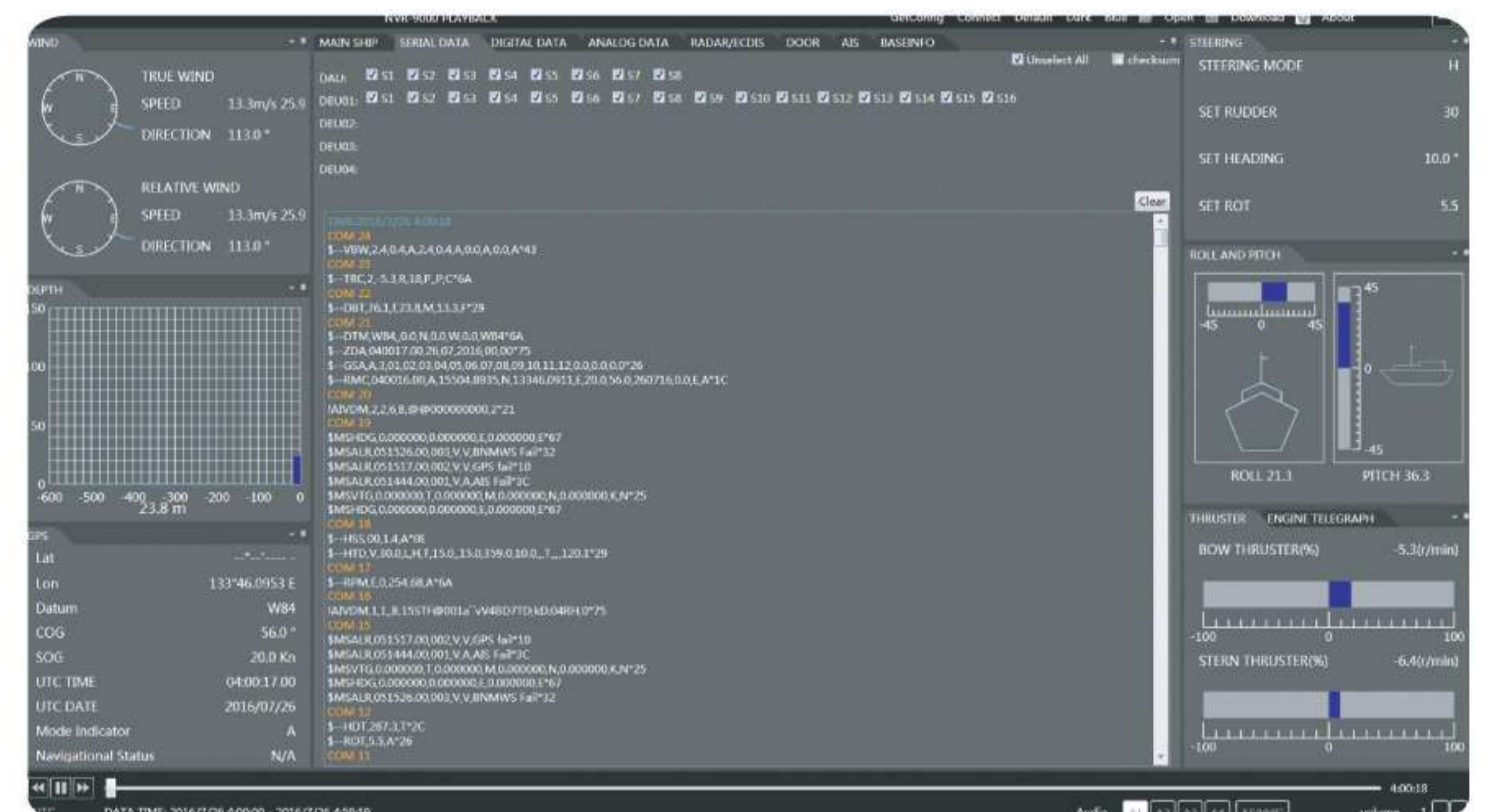


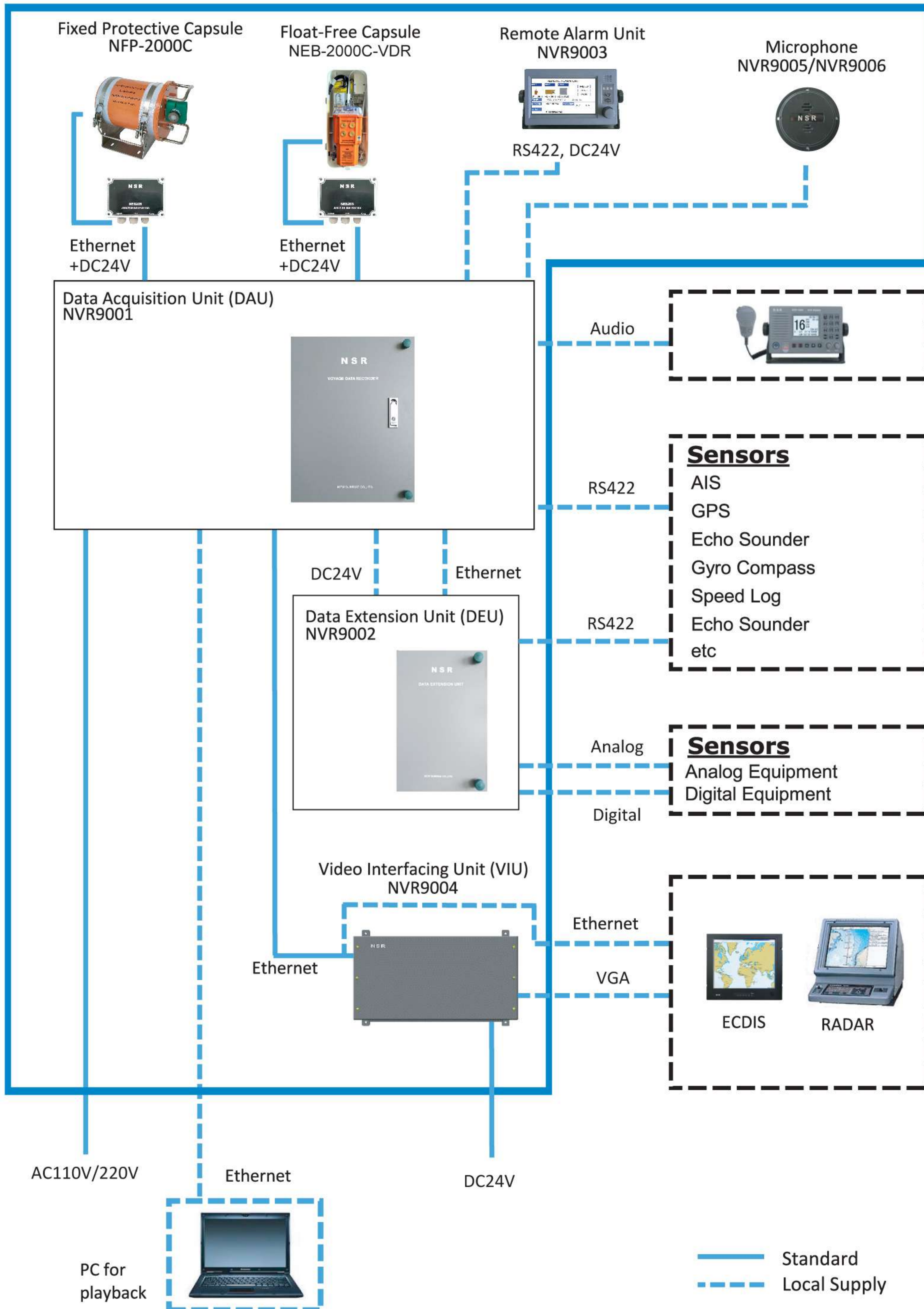
DAU



NVR-9000/VDR is designed to comply with the latest IMO rules of MSC.333 (90), MSC.214 (81).

- Store data for min 48 hours both in Float-free Capsule (FFC) and Fixed Protective Capsule (FPC).
- Store data for min 30days/720 hours in Data Acquisition Unit.
- Record image of two radars and two ECDIS.
- Three separate channels for audio input:
 - One for up to 4 microphones
 - One for up to 4 microphones
 - One for 2 VHF audio
- As standard configuration, below ports provided:
 - Serial port × 24 ch (8 ch at DAU and 16 ch at DEU)
 - Digital port × 64 ch (DEU)
 - Analog port × 8 ch (DEU)
- PC software available for playback & realtime monitoring.





SPECIFICATIONS

Data Acquisition Unit (DAU)	Interface	Ethernet IEC61162-450	16 ch
		Serial IEC61162-1/2, RS422	8 ch
		VHF Audio	2 ch
		Microphone	8 ch
		Remote Alarm Unit	1 ch
		USB	1 ch
	DC 24V output	Remote Alarm Unit (RAU)	1 ch
		Fixed Protective Capsule (FPC)	1 ch
		Float-Free Capsule (FFC)	1 ch
	Recording Duration		min 720 hours
Reserve Battery Capacity		min 2 hours	
Fixed Protective Capsule (FPC)		Memory	64 GB
		Recording Duration	min 48 hours
Float-Free Capsule (FFC)		Memory	64 GB
		Recording Duration	min 48 hours
		Battery Capacity	min 168 hours
		Battery Life	5 years
Data Extension Unit (DEU)	Interface	Analog Input	8 ch
		Digital Input	64 ch
		Serial IEC61162-1/2, RS422	16 ch
		Ethernet	1 ch
Video Interface Unit (VIU)	Interface	VGA	1-2 ch
		Ethernet	1-2 ch
Remote Alarm Unit (RAU)		Serial IEC61162-1/2, RS422	1 ch

POWER SUPPLY

Data Acquisition Unit (DAU)	AC100V/220V, 0.5~1.5A, 50/60Hz
Data Extension Unit (DEU)	DC24V, 0.5A
Video Interface Unit (VIU)	DC24V, 0.3A

EQUIPMENT LIST

Standard

1 Data Acquisition Unit (DAU)	NVR9001	1 unit	5 Indoor Microphone Unit (IMU)	NVR9005	4 units
2 Data Extension Unit (DEU)	NVR9002	1 unit	6 Outdoor Microphone Unit (OMU)	NVR9006	2 units
3 Remote Alarm Unit (RAU)	NVR9003	1 unit	7 Fixed Protective Capsule (FPC) *	NFP-2000C	1 unit
4 Video Interface Unit (VIU)	NVR9004	0~4 units	8 Float-Free Capsule (FFC) *	NEB-2000C-VDR	1 unit

* NEB-2000C-VDR/NFP-2000C is supplied together with a Junction Box (NEB205) and cable (30m).

Option

1 Data Extension Unit (DEU)	NVR9002
2 Video Interface Unit (VIU)	NVR9004
3 Indoor Microphone Unit (IMU)	NVR9005
4 Outdoor Microphone Unit (OMU)	NVR9006

※ Specifications subject to change without notice.

1	Data Acquisition Unit (DAU)	NVR9001	IP22	15.2kg	
2	Data Extension Unit (DEU)	NVR9002	IP22	5.2kg	
3	Remote Alarm Unit (RAU)	NVR9003	IP22	1.6kg	
4	Video Interface Unit (VIU)	NVR9004	IP22	2.5kg	
5	Indoor Microphone Unit (IMU)	NVR9005	IP22	0.1kg	
6	Outdoor Microphone Unit (OMU)	NVR9006	IP56	0.2kg	
7	Fixed Protective Capsule (FPC)	NFP-2000C	IP68	16.5kg	
8	Float-Free Capsule (FFC)	NEB-2000C-VDR	IP67	3.5kg	