

**SIMRAD**

# StructureScan<sup>®</sup> HD

A higher standard of sonar definition.

New



# Best-In-Class Structure and Fish-Finding is now HD.

Following the success of the original StructureScan® imaging module, which revolutionised fish-finding with our exclusive DownScan Imaging™ technology, we bring you an even greater level of structure and fish-finding detail with StructureScan® HD.

Utilising a transducer which has increased length and provides a narrower beam angle, and by maintaining a low frequency and with updated hardware inside the module, our new StructureScan® HD reveals more than ever before in an easy to understand picture-perfect way.

## More Range & Greater Resolution.

The new StructureScan® HD now delivers the widest sonar imaging range to reveal targets at farther distances than ever before, with extended side-to-side coverage of 600ft/183m.

StructureScan® HD also provides the highest level of definition possible of structure, fish, thermoclines and more. In depths over 50ft/15m, StructureScan® HD has twice the level of definition when compared with the original StructureScan®.

With the ability to see farther, with increased clarity, side-to-side, and straight down, you'll be able to find the best locations sooner for fishing, diving, anchoring and more.

## Compatible Displays.



### ► Unrivalled Integration

Stylish, 15, 17 and 19-inch, LED backlit monitors network together with a fast, marine-grade processor and alphanumeric controller to allow bespoke installation options.

**NSO OFFSHORE**



### ► Expert Technology

A powerful chartplotter / multifunction display offering professional level performance. 8 and 12-inch models.

**NSE EXPERT**



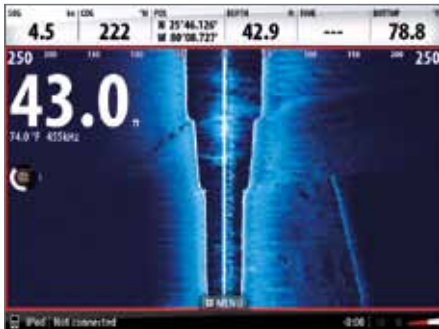
### ► Touchscreen Navigation

Fully integrated, touchscreen chartplotter / multifunction display. With touch, swipe and tap functionality and easy to understand icon style menus for intuitive operation. 7, 8 and 12-inch models.

**NSS SPORT**

# StructureScan® HD

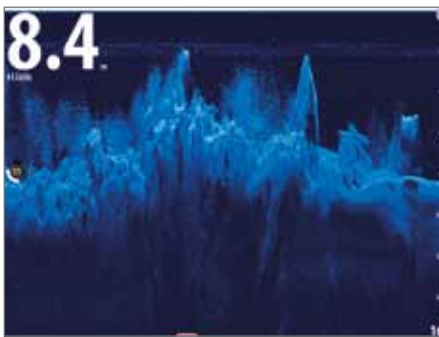
## A higher standard of sonar definition.



View detailed images up to 300ft either side of your boat.

### ► Expand Your View – Wider SideScan Imaging Range

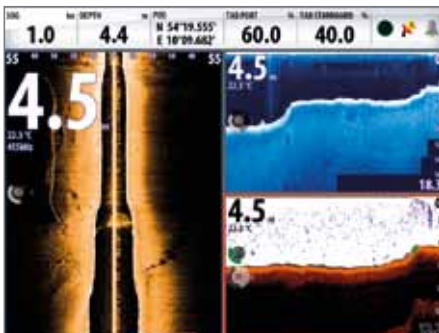
Crisp side-viewing StructureScan® HD detail extends up to 300ft/91.5m on each side of your boat, giving a total high-resolution coverage of 600ft/183m.



High resolution - easy to interpret.

### ► Sharpen Your View – Greater Resolution

Exclusive DownScan Imaging™ technology enables StructureScan® HD to produce the highest level of definition straight down, providing the user with easy to interpret images of structure, fish and thermoclines.



SideScan, DownScan and traditional sonar.

### ► The Whole Picture

Enjoy full, detailed, panoramic underwater images with combined SideScan and DownScan Imaging™, for a complete high-definition view of the underwater world. You can even add traditional sonar to your display, with the option of DownScan Overlay™ which enables down-looking StructureScan® HD images to be merged with refined 2D sonar for easy structure and fish identification.

### ► Components, Networking & Transducer Options

The StructureScan® HD system features a processing module and transducer that easily connects to Simrad NSS, NSE or NSO navigation systems via a high-speed Ethernet cable. The module can support up to three onboard displays, each with independent control of the module.

Precision engineered transducer options include a new Skimmer® for transom or flush mount, plastic and bronze thru-hull imaging transducers and twin transducer options for hulls with a deep-vee.



StructureScan® HD module, Skimmer® & thru-hull transducer

# StructureScan® HD Specifications

SideScan Imaging	
Maximum Range	600 ft/183 m side-to-side
Maximum Depth	150 ft/46 m
Maximum Speed	Track bottom: 35 mph/56 kph Mark objects: 15 mph/24 kph Optimum imaging: 2-8 mph/3-13 kph
DownScan Imaging™	
Maximum Depth	300 ft/92 m
Maximum Speed	Track bottom: 55 mph/88 kph Mark objects: 35 mph/56 kph Optimum imaging: 2-8 mph/3-13 kph
Technical	
Power Requirements	12 VDC
Voltage Input	10-17 VDC
Transmit Power	500W RMS 4,000W Peak-to-Peak
Current Drain	Maximum: .75A Typical: .60A Inrush: 4.7A
Fuse/Type	External – 3A Automotive Blade
Transducer Cable	20 ft/6 m
Transducer Frequency	Enhanced 455 kHz
Communication	Ethernet
Networking	Ethernet ports to share StructureScan® HD with up to 3 onboard displays; NEP-2 option for added expansion
Compatible Multifunction Displays	Simrad NSO, NSE, NSS



**SERVICE BEYOND THE STANDARD.**



Your gateway to  
[Simrad-Yachting.com](http://Simrad-Yachting.com)  
Scan this code with your mobile.

