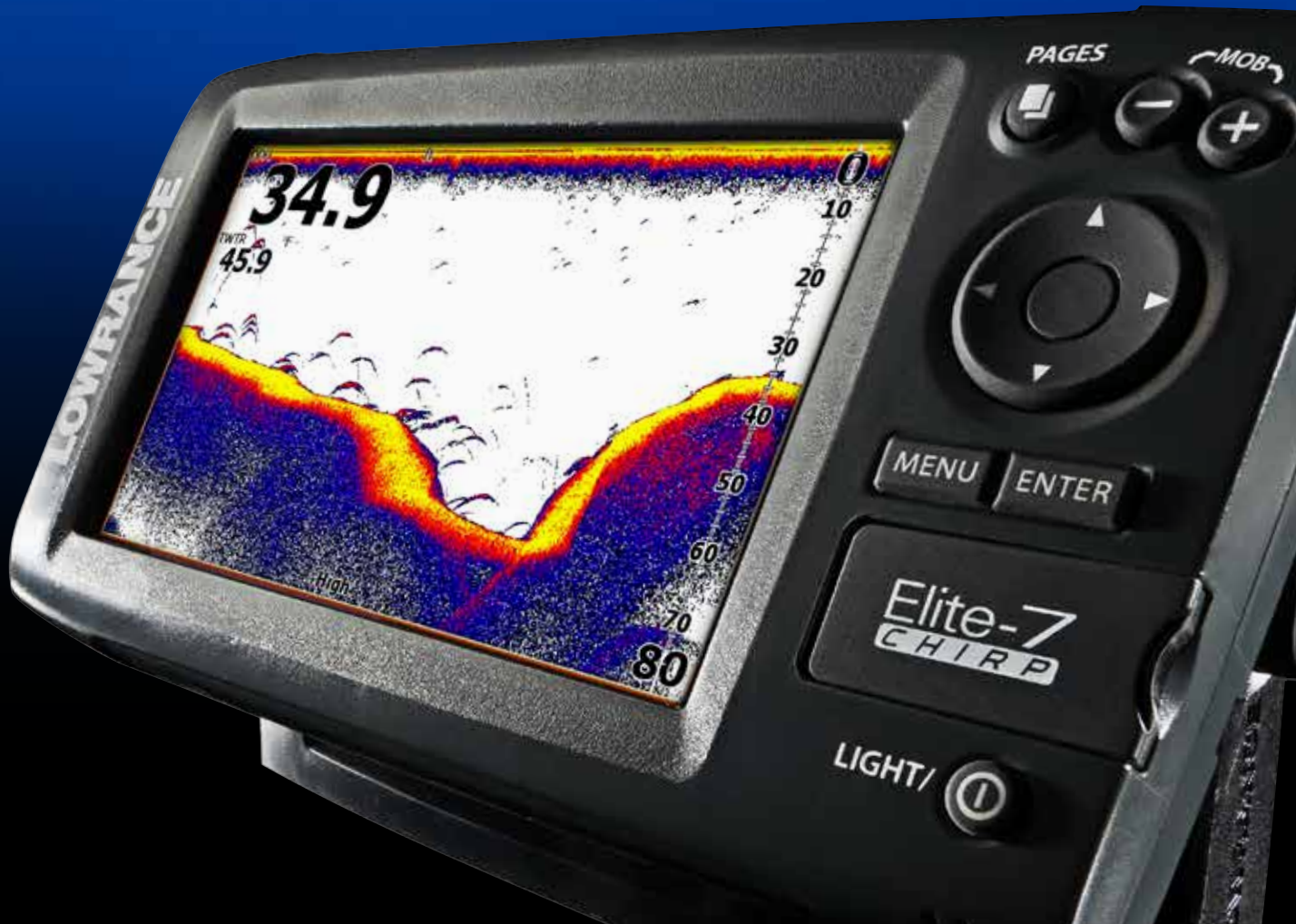


**LOWRANCE®**

THE NEW STANDARD IN

# CLARITY

INTRODUCING LOWRANCE'S **NEW CHIRP SONAR SERIES**



# ADVANTAGES

Until CHIRP, most fishfinders used a single-frequency signal, considered to be the sonar standard for marking depths as well as fish targets. And, 200 kHz is generally considered a good single-frequency option for shallow- to mid-range depths (to around 300 feet) and 50 kHz is a good option for greater depths.

Although Lowrance sonar is considered to be the best fishfinder in the world, single-frequency operation does have its drawbacks. For example, to increase sensitivity, you increase clutter on the display—both near the surface and in the water column. But, if you reduce sensitivity, you could miss fish targets.

Because CHIRP sonar uses multiple frequencies at once, you are able to see fish targets better than ever before. Individual game fish are now more easily identified in or around bait schools, and game fish are more easily seen when holding near structure or the bottom.

You also get the clear benefit of a clutter-free display. And, all of these advantages are available whether you're fishing an inland lake, or off the coast on a deeper saltwater trip.

## HOW MULTIPLE CHIRP SONAR SETTINGS—PROVIDE CLARITY

### MULTIPLE CHIRP SETTINGS FROM A SINGLE TRANSDUCER

Because Lowrance fishfinders give you the option of using more than one CHIRP Sonar signal, it's important to understand which one is right for your fishing situation.

### HIGH CHIRP FREQUENCY SELECTION

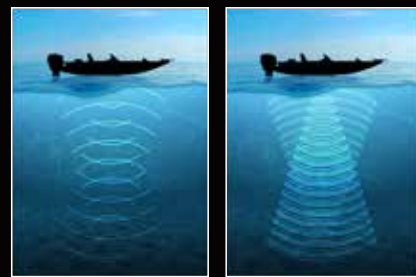
Most frequently used for freshwater as well as more shallow coastal areas. It provides the greatest detail for tracking smaller objects, like your lure, or identifying game fish from bait fish, as well as game fish that are near structure or on the bottom.

### MEDIUM CHIRP FREQUENCY SELECTION

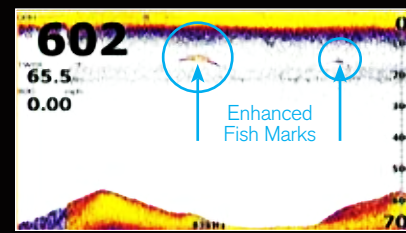
Wide coverage makes this frequency best for covering large areas while searching for structure or fish. However, this option is not as detailed as High CHIRP and will not penetrate as deep as Low CHIRP.

### LOW CHIRP FREQUENCY SELECTION

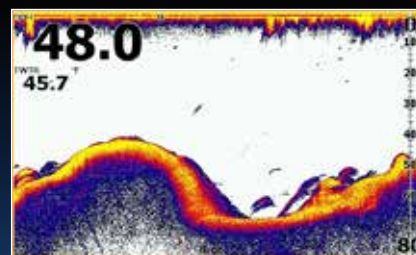
Provides the greatest depth performance, while marking fish targets throughout the entire water column.



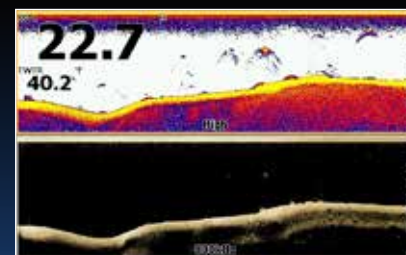
Traditional Sonar vs CHIRP Sonar



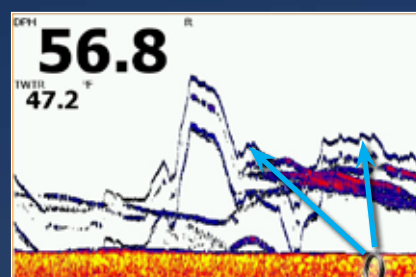
Medium CHIRP Sonar. Tracking 600ft depth and fish marks at 200ft



Clearer Display, Enhanced Fish Targets

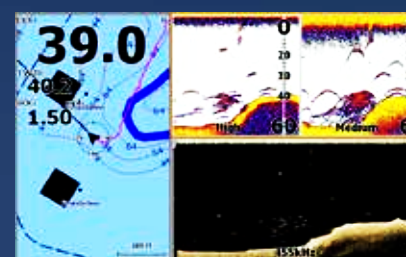


CHIRP sonar plus DownScan Imaging™ Splitscreen



### SONAR SO CLEAR YOU CAN SEE YOUR SWIVEL

The sensitivity of Lowrance High CHIRP Sonar is so advanced, you are able to pinpoint the location of your lure or bait. This makes it much easier to place your rig closer to the ideal strike zone.



View chartplotter, High CHIRP, Med CHIRP and DownScan Imaging™ at once—from one HDI transducer.

# FEATURES

The Elite CHIRP Series includes all of the proven features recently launched with the highly successful Elite HDI Series with the addition of CHIRP Sonar technology—providing greater sensitivity, improved target resolution, and superior noise rejection for clearer, easy-to-use bait fish and game fish targets.



# SUPERIOR

### AFFORDABLE PRICE, IMPROVED PERFORMANCE

Lowrance HDI Transducers enable you to choose between High and Low (saltwater) or High and Medium (freshwater) CHIRP settings. Simply select the frequency that best suits your fishing situation.

### COMBINED CHIRP SONAR WITH DOWNSCAN IMAGING™ TECHNOLOGY

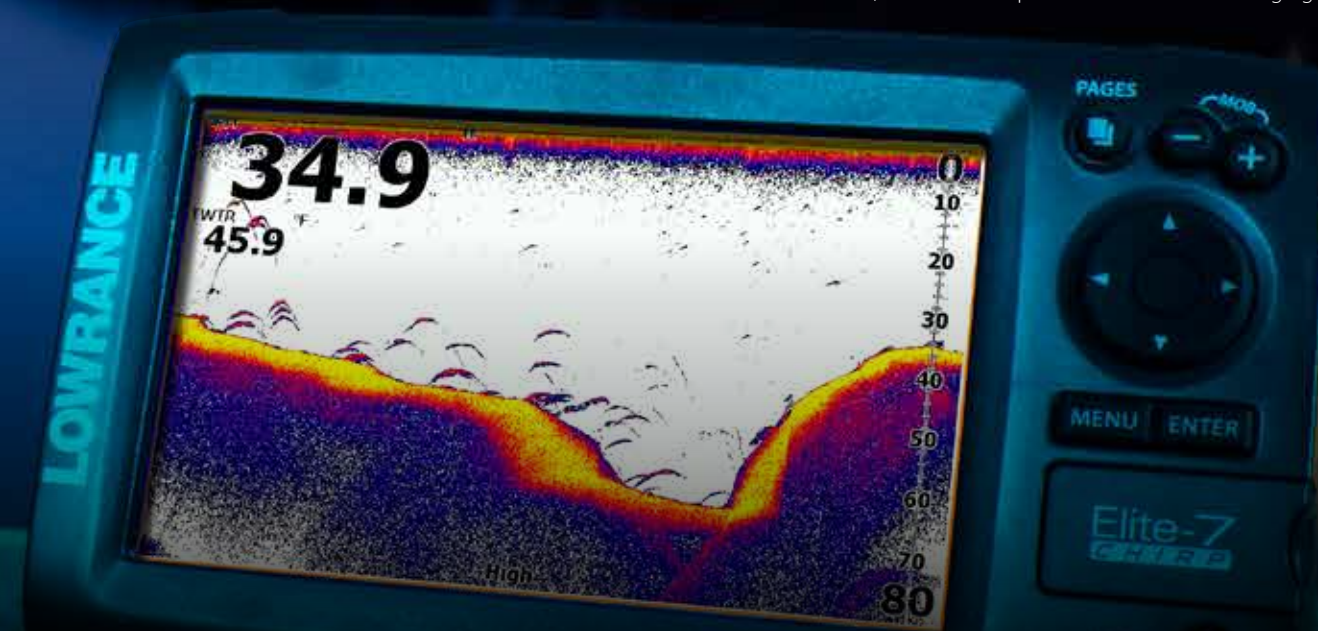
DownScan Imaging™ provides picture-like images of fish-holding structure beneath your boat. Display CHIRP Sonar and DownScan Imaging in split-screen view, or combine them in full-screen mode using DownScan Overlay™.

### HIGHLY ACCURATE, BUILT-IN GPS ANTENNA PLUS DETAILED U.S. MAP

Featuring more than 3,000 lakes and rivers, our technology allows you to create your own map from real sonar data that you record with Insight Genesis™ (200 kHz recommended for sonar recording). Optional chart upgrades include Lake Insight™ and Nautic Insight™ PRO, as well as HD, Navionics® Gold and Jeppesen C-Map Max-N.

### ADVANCED FISHFINDING PLUS EASE-OF-USE

TrackBack™ to rewind recorded sonar history including structure, transitions or fish targets, then pinpoint locations with a waypoint (on chartplotter models). Page Selector menu provides quick access to all features using one-thumb operation, and Multi-Window Display lets you quickly choose from pre-set page layouts—including a three-panel view with chart, CHIRP sonar options and DownScan Imaging.



## ELITE CHIRP SERIES



5"

### ELITE-5 & 5x CHIRP SERIES

High-Bright SolarMax™ LED Backlit Display

ELITE-5 CHIRP ICE MACHINE, 83/200 kHz Transducer

ELITE-5 CHIRP GOLD, No Transducer

ELITE-5 CHIRP BASE, No Transducer

ELITE-5 CHIRP GOLD, 50/200 + 455/800 kHz Transducer

ELITE-5 CHIRP GOLD, 83/200 + 455/800 kHz Transducer

ELITE-5 CHIRP, 50/200 + 455/800 kHz Transducer

ELITE-5 CHIRP, 83/200+ 455/800 kHz Transducer

#### Fishfinders / Chartplotters

000-11646-001

000-11648-001

000-11650-001

000-11651-001

000-11652-001

000-11654-001

000-11655-001

#### Fishfinders

ELITE-5X CHIRP, No Transducer

000-11653-001

ELITE-5X CHIRP, 50/200 + 455/800 kHz Transducer

000-11656-001

ELITE-5X CHIRP, 83/200 + 455/800 kHz Transducer

000-11657-001

7"

### ELITE-7 & 7x CHIRP SERIES

High-Bright SolarMax™ LED Backlit Display

ELITE-7 CHIRP GOLD, No Transducer

000-11658-001

ELITE-7 CHIRP GOLD, 83/200 + 455/800 kHz Transducer

000-11659-001

ELITE-7 CHIRP GOLD, 50/200 + 455/800 kHz Transducer

000-11661-001

ELITE-7 CHIRP, No Transducer

000-11662-001

ELITE-7 CHIRP, 83/200 kHz Transducer

000-11663-001

ELITE-7 CHIRP, 50/200 + 455/800 kHz Transducer

000-11664-001

ELITE-7 CHIRP, 83/200 + 455/800 kHz Transducer

000-11665-001

#### Fishfinders / Chartplotters

#### Fishfinders

ELITE-7X CHIRP, No Transducer

000-11666-001

ELITE-7X CHIRP, 50/200 + 455/800 kHz Transducer

000-11667-001

ELITE-7X CHIRP, 83/200 + 455/800 kHz Transducer

000-11668-001

## CHIRP SERIES TRANSDUCERS & ACCESSORIES

TRANSDUCER SPECIFICATIONS	SONAR CAPABILITIES
455/800 kHz	DownScan Imaging™
83/200 kHz	Medium and High CHIRP Sonar
50/200 kHz	Low and High CHIRP Sonar

#### ELITE-5

Elite-5 Protective Sun Cover  
Replacement Mounting Bracket  
LGC-16W External 1Hz GPS Antenna  
Elite-5 Flush Mount Kit  
RAM 1" Elite-5 Quick Release Mount  
RAM 1.5" Elite-5 Quick Release Mount

000-10050-001  
000-10027-001  
000-00146-001  
000-10028-001  
000-10909-001  
000-10910-001

#### ELITE-7

Elite-7 Protective Sun Cover  
Replacement Gimbal Bracket  
Replacement Bracket Knobs  
Point-1 External GPS Antenna  
Elite-7 Flush Mount Kit

000-11069-001  
000-11019-001  
000-10467-001  
000-11047-001  
000-10979-001

#### COMMON

Replacement Power Cable  
Kayak Scupper Transducer Mount  
Trolling Motor Mount for HDI 83/200 kHz  
HDI Skimmer Transducer 83/200 455/800 kHz  
HDI Skimmer Transducer 50/200 455/800 kHz  
Bronze HDI Transducer 0-degree Tilt  
Bronze HDI Transducer 12-degree Tilt  
Bronze HDI Transducer 20-degree Tilt

000-0127-49  
000-10606-001  
000-10978-001  
000-10976-001  
000-10977-001  
000-11133-001  
000-11134-001  
000-11135-001

# LOWRANCE®

4500 South 129th East Ave., Suite 200, Tulsa OK 74134-5885 USA

Tel: 1.800.628.4487 or 918.437.6881

www.lowrance.com

Products, features and specifications subject to change without notice.  
© 2014 Navico 0708 985-10790-001