

---

# Basic User Manual

## KS-60 USB WiFi Antenna

---



**WiFi**  
KS-60 

## 1. Introduction

Thank you for purchasing the Scout KS-60 USB WiFi antenna, a professional marine antenna with 100% waterproof technology (learn more on [www.scoutantenne.com](http://www.scoutantenne.com)). The KS-60 is specifically designed for the marine environment and for outdoor installation, to allow long range WiFi connectivity for any computer with a USB port.

The KS-60 is compatible with the following operating systems:

- Microsoft Windows XP, Windows Vista, Windows 7 and Windows 8
- Apple Mac OS X 10.4, 10.5, 10.6, 10.7 and 10.8

**Attention: do not plug in the KS-60 to the USB port of your computer before you have installed the drivers.**

## 2. Installing the KS-60 on Windows

To operate the KS-60 on Windows you need first to download the drivers and the Realtek Wireless Lan Utility, following the steps below.



**If the operative system installed on your computer is Windows Vista, Windows 7 or Windows 8 and you are connected to the internet you can skip the following procedure and directly plug in the KS-60 to the USB port, it will detect the driver automatically and start the download.**

*Step 1* - go to [www.scoutantenne.com](http://www.scoutantenne.com) > Products > WiFi Antennas > KS-60 and select the Windows driver from the driver list (Figure 1).

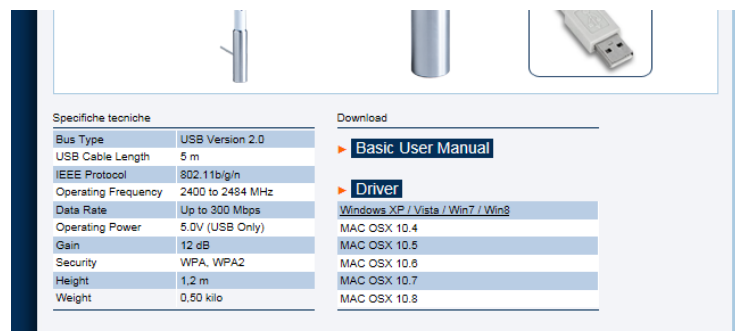


Figure 1

*Step 2* - save the file to your desktop and open it, then launch the Setup.exe (Figure 2).

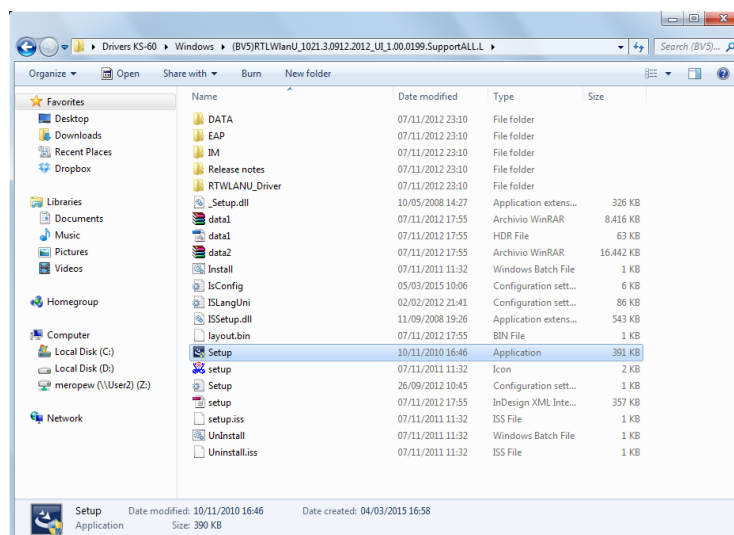


Figure 2

Step 3 - press "Next" to start the installation process, that takes only few seconds. When the installation is finished you need to Restart the computer (Figure 5).



Figure 3

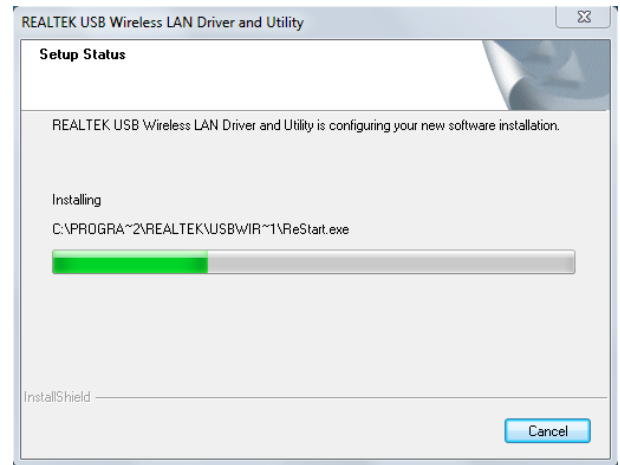


Figure 4

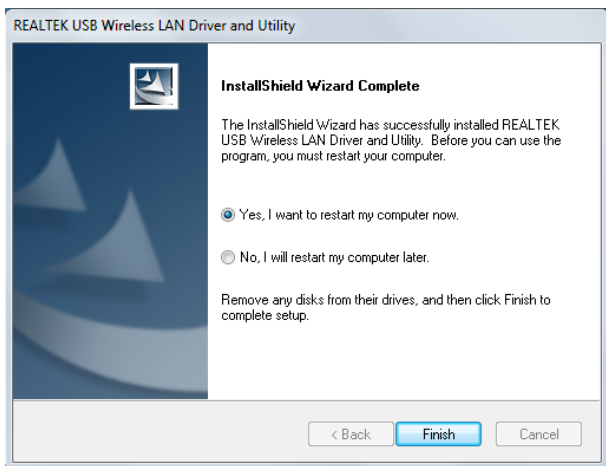


Figure 5

Step 4 - once the computer has fully rebooted, plug in the KS-60 to the USB port. A pop up window will inform you that the device driver software is going to be installed (Figure 6). When the installation is completed another pop up window informs you that the device driver software has been installed successfully (Figure 7). The KS-60 is now ready to use.

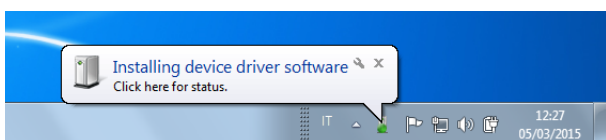


Figure 6

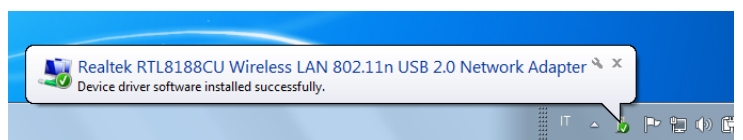


Figure 7

### 3. Operating the KS-60 on Windows

To operate the KS-60 on Windows you can use either the Windows Wireless Connection Manager (Figure 8) or the Realtek Wireless LAN Utility, which you downloaded together with the driver (Figure 9). Both options are fine, just consider that the Realtek Wireless LAN Utility offers more features than the tool supplied by Windows.



Figure 8

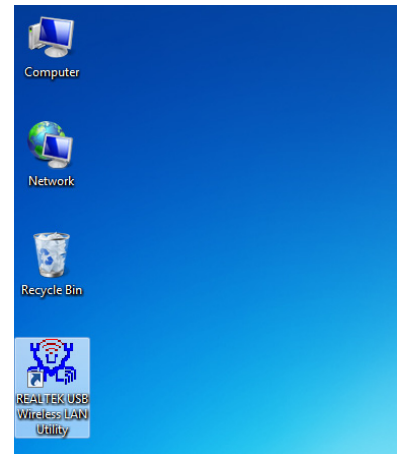


Figure 9

**Attention:** to avoid confusion with using the KS-60 is always better to disable the internal wireless adaptor on your laptop. You can do it through the Network and Internet functions of the Control Panel (Figure 10).

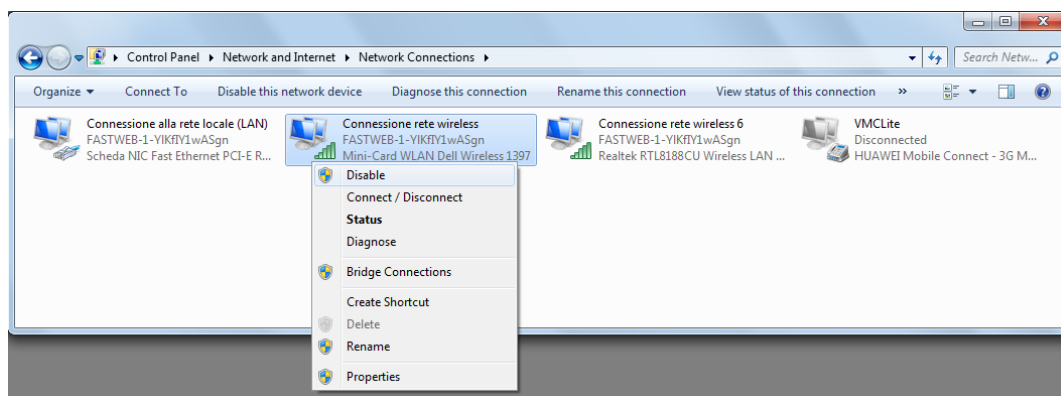


Figure 10

#### Operating the KS-60 with the Windows Wireless Connection Manager

Click on the Wireless Networks icon in the task bar and a list of available wireless networks will be displayed. Your laptops internal wireless adaptor is usually named "Wireless Network Connection" and the KS-60 will automatically be named "Wireless Network Connection 2" or possibly another number if other adaptors have been used previously.

It is always a good idea to rename this connection by going in to the "Network and Sharing Center" and change its name to something more meaningful (for example "KS-60"), so that you can be certain of which wireless adaptor you are using (Figure 11).

Select the network you would like to connect by clicking on it. If the network lists an encryption type or Network authentication you will need a network key or password to gain access.



Figure 11

## Operating the KS-60 with the Realtek Wireless LAN Utility

To connect to a wireless network you must run the “Realtek USB Wireless LAN Utility” from your desktop icon (Figure 9) or Program Folder in the Start Menu. You must have your KS-60 connected to your PC’s USB port to open the utility. The utility will not open if it does not detect the antenna.

The screen that will appear when the utility has been opened is the one displayed in Figure 12, which shows that you are not connected to a wireless network. To begin, select the “Available Network” tab and select the network you would like to connect by double clicking on it (Figure 13).

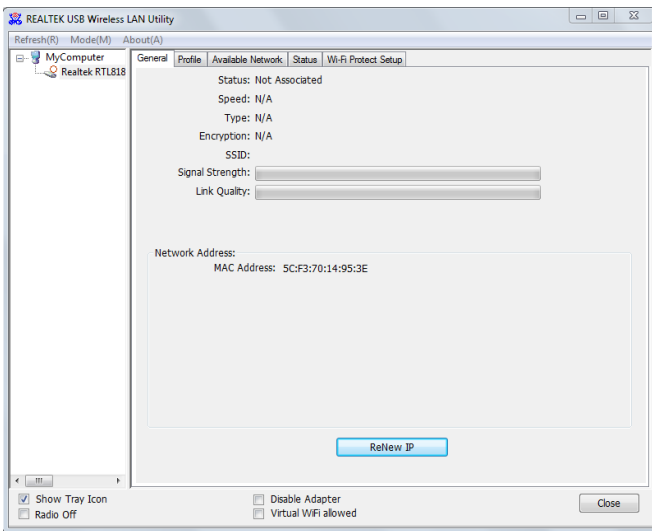


Figure 12

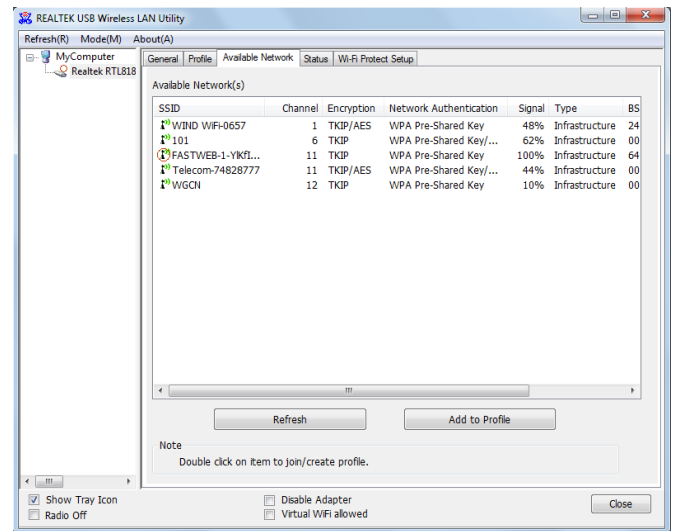


Figure 13

If the network lists an encryption type or Network authentication you will need a network key or password to gain access. If “None” is listed, you can connect without providing a password (Figure 14).

If you click on the “General” tab you will see the window shown in Figure 15 which gives the wireless connection status.

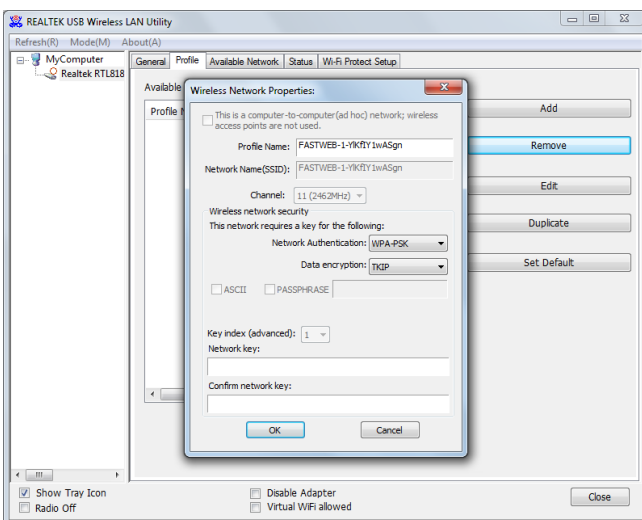


Figure 14

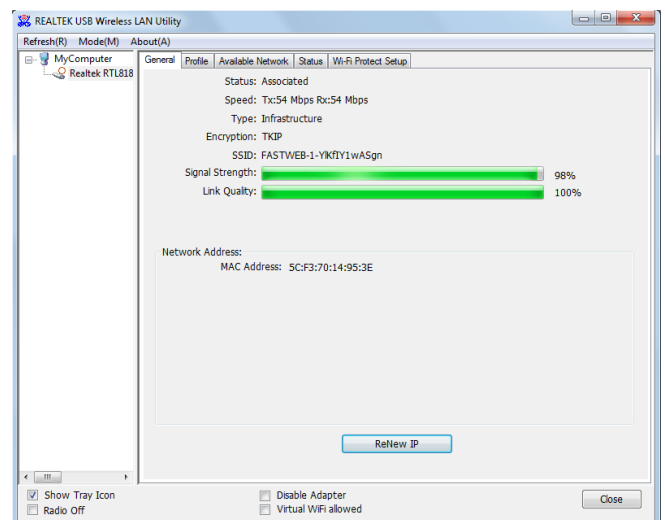


Figure 15

At this point, you should be connected to the selected network and be able to access the network’s resources (i.e. internet, printers, other network devices).

### 3. Installing the KS-60 on a Mac

To operate the KS-60 on a Mac you need first to download the drivers and the Realtek Wireless Lan Utility, following the steps below.

*Step 1* - go to [www.scoutantenne.com](http://www.scoutantenne.com) > Products > WiFi Antennas > KS-60 and select the Mac driver from the driver list (Figure 16).

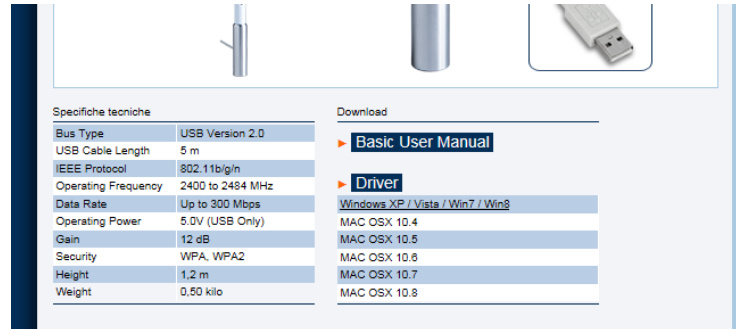


Figure 16

*Step 2* - save the file to your desktop and open it, then double click on the Installer.pkg. Follow the installation instructions as shown in Figure 17 and Figure 18.



Figure 17



Figure 18

Once the installation is completed Figure 19 will appear. Restart the computer (Figure 19).

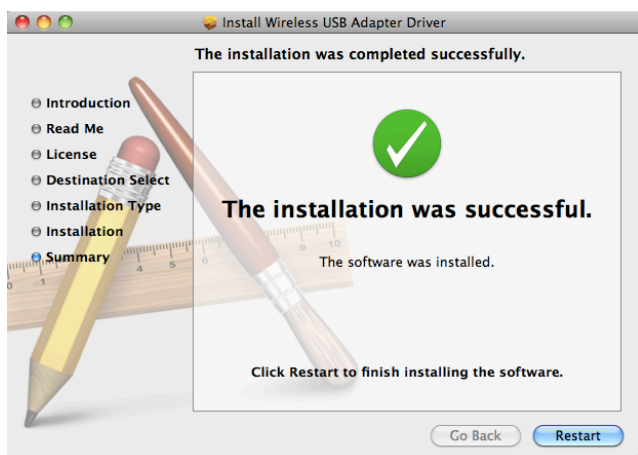


Figure 19

Step 3 - once the Mac has restarted, plug the KS-60 in to the USB port and two things will happen. A new icon will appear in the Dock (Figure 20), a new application will open and a window will be displayed (Figure 21) - this is the Realtek Wireless Network Utility.



Figure 20

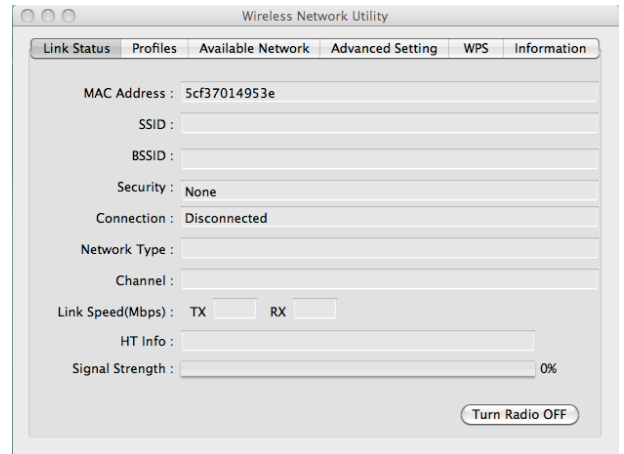


Figure 21

Step 4 - turn off your internal Airport wireless adaptor, then click on the Available Networks tab to display a list of the wireless networks or wireless hotspots within range of your KS-60. If the network lists an encryption type or Network authentication you will need a network key or password to gain access. If "None" is listed, you can connect without providing a password (Figure 22). To connect to a network, select the network and click "Connect".

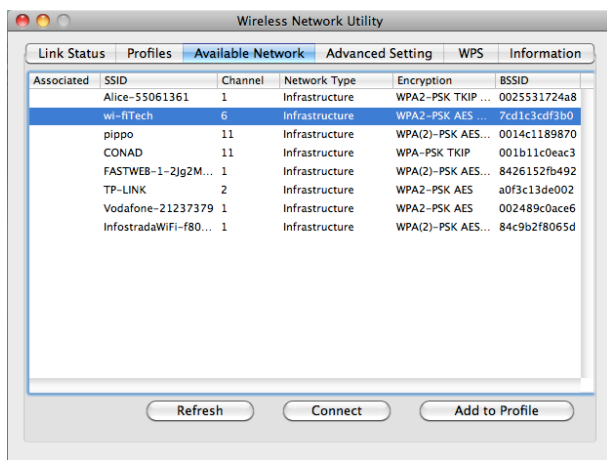


Figure 22

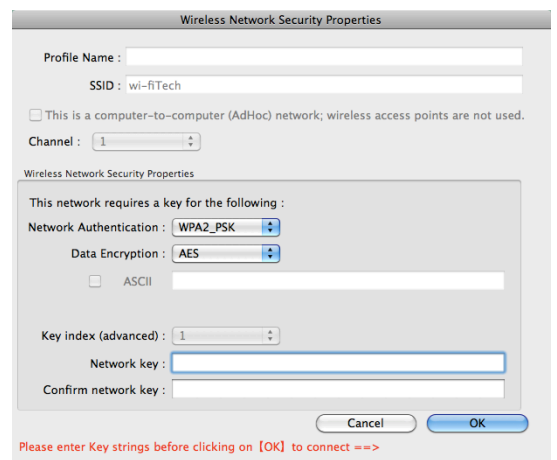


Figure 23

The first time your KS-60 connects to any given wireless network, you will need to create a profile that saves the settings (SSID, Network Name, Network Key). If the network requires a password, you will enter it in the "Network Key" field and confirm below. Click "OK" when finished to connect (Figure 23).

At this point, you should be connected to the selected network and be able to access the network's resources (i.e. internet, printers, other network devices) (Figure 24).

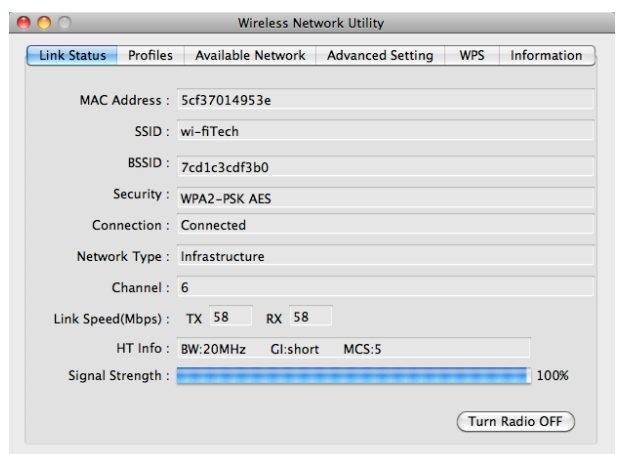


Figure 24