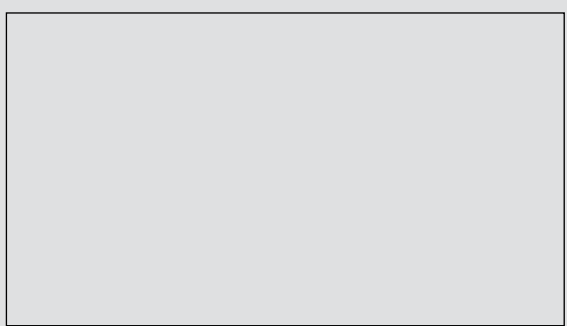




ALPHATRON
Alphatron Marine



ALPHATRON
Alphatron Marine

The human touch in technology

*Maintenance free
Gyro compass ALPHAMINICOURSE*

ALPHAMINICOURSE GYRO COMPASS

SMALL IN SIZE - GREAT IN PERFORMANCE

Over 700 Alphaminicourse gyro's are in operation since its introduction

APPLICATION

The Alphaminicourse is designed to meet the needs of the marine market. Highly accurate performance derived from the aerospace industry, combined with a rugged construction in order to cope with the most severe circumstances at sea.

The Alphaminicourse provides the following data:

- Heading against the geographical meridian at the vessel speed up to 90 knots, latitude up to 80 degrees and roll and pitch angles up to maximum 50 degrees
- Rate of turn indicator
- Information on operation mode and failure indication



BEARING REPEATER WITH VERNIER ON BRACKET

Alphacourse B
NMEA Type



STEERING REPEATER WITH VERNIER

Alphacourse G
NMEA Type



FEATURES

- Maintenance free
- Fast settling time < 45 minutes
- Low power consumption
- Small size 288x240x329 mm
- World wide support
- Wheelmark MED approved
- Suitable for all kinds of vessels
- Automatic start up and alignment
- Automatic speed and latitude correction
- High follow up rate > 200° sec
- Light weight 12.5 kg
- Shock resistant up to 5G
- One unit design
- Low cost of ownership
- Complies with high speed HSC code
- Built-in test function
- Quadriple gyro configuration
- Full range of serial repeaters available

CONFIGURATION

The Alphaminicourse has a monoblock design, the compass outer casing has a window on top. For easy compass reading and if required, the control unit can be mounted at maximum 100 meters from the main gyro.

ALSO AVAILABLE

- NMEA Booster
- Stepper Booster
- Gyro interswitch
- Horizontal stand
- Tilting bracket
- Rate of turn indicator

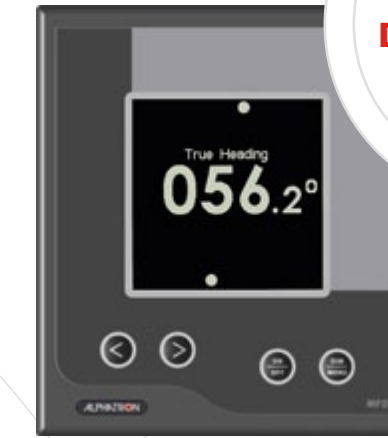
DRY GYRO ELEMENT

The high precision dynamically tuned gyroscope and gimbal suspension. Derived from aerospace technology, now available to the marine industry.

- No liquid used
- No heating or cooling
- No annual service

Complies with EU rules for ecological safety.

MULTI-FUNCTIONAL DIGITAL GYRO REPEATER



Alphacourse MFD

- NMEA Type
- Digital gyro course
- Rate of turn trend
- Audible stepper clicks

ANALOGUE/DIGITAL MULTIFUNCTIONAL GYRO REPEATER



Alphacourse MF

- NMEA Type
- Analogue gyro course
- Digital gyro course
- Rate of turn trend
- Audible stepper clicks

TECHNICAL DATA

| | |
|-----------------------|--------------------------|
| Dynamic accuracy | <+/- 0,6° sec |
| Settle point error | <+/- 0,2° sec |
| Follow up speed | >200° sec |
| Settling time | < 45 minutes within 0,7° |
| Operation temperature | from -15°C to +55°C |
| Storage temperature | from -60°C to +80°C |
| Shock | up to 5G |
| Assigned service life | 40.000 hours |

Inputs

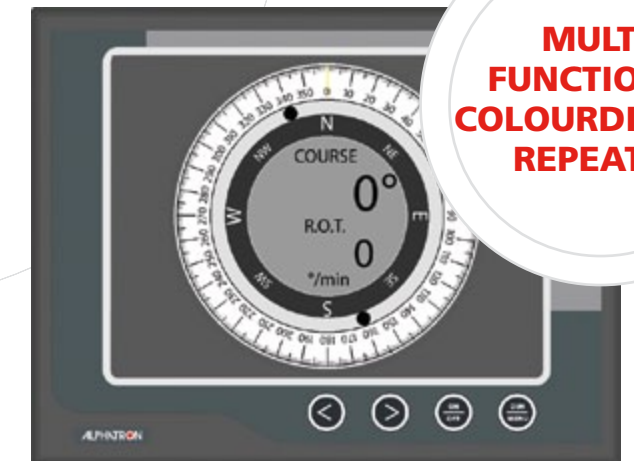
| | |
|-----------------------|---|
| Latitude | NMEA 0183 via RS232 / RS422 from GPS |
| Speed | Pulse or contact at 100, 200 and 400 per nm from log NMEA 0183 via RS232 / RS422 from log |
| Input voltage | 24 (18-36) V DC |
| Power consumption | Startup 50W / Operation 25W |
| Assigned service life | 40.000 hours |

Outputs

| | |
|-------------|--|
| Step | 1x (5V TTL), 6 steps per degree |
| Serial data | 12x RS422, NMEA 0183 4x RS232, NMEA 0183 1x ROT +/- 200° sec (+/- 10 V) |

The gyro compass Alphaminicourse complies with requirements (19), MEC 945-96, ISO 8728-1987 of IMO A.424(XI), A.821

MULTI-FUNCTIONAL COLOURDISPLAY REPEATER



Alphacourse MFC

- NMEA Type
- Digital gyro course
- Rate of turn trend
- Audible stepper clicks

