

LOWRANCE®

HDS Gen2 Touch

Operator manual

ENGLISH



**Copyright © 2013 Navico
All Rights Reserved**

Lowrance® and Navico® are registered trademarks of Navico.

Fishing Hot Spots® is a registered trademark of Fishing Hot Spots Inc. Copyright© 2013 Fishing Hot Spots.

Navionics® is a registered trademark of Navionics, Inc.

NMEA 2000® is a registered trademark of the National Marine Electronics Association.

Additional mapping data: Copyright© 2013 NSI, Inc.: Copyright© 2013 by Richardson's Maptech.

⚠ Warning: It is your sole responsibility to install and use the instrument and transducer(s) in a manner that will not cause accidents, personal injury or property damage. Always observe safe boating practices.

Sonar performance: The accuracy of the sonar depth display can be affected by many factors, including the type and location of the transducer and water conditions. Never use this instrument to gauge depth or other conditions for swimming or diving.

The choice, location, and installation of transducers and other components of the system are critical to the performance of the system as intended. If in doubt, consult your local dealer.

To reduce the risk of misusing or misinterpreting this unit, you must read and understand all aspects of this Installation and Operation Manual. We also recommend that you practice all operations using the built-in simulator before using this unit on the water.

Global Positioning System: The Global Positioning System (GPS) is operated by the US Government which is solely responsible for its operation, accuracy and maintenance. The GPS is subject to changes which could affect the accuracy and performance of all GPS equipment anywhere in the world, including this instrument.

Electronic Chart: The electronic chart used by this instrument is an aid to navigation designed to supplement, not replace, official government charts. Only official government charts supplemented by notices to mariners contain the information required for safe and prudent navigation. Always supplement the electronic information provided by this instrument with other plotting sources such as observations, depth soundings, radar and hand compass bearings. Should the information not agree, the discrepancy must be resolved before proceeding any further.

Navico may find it necessary to change or end our policies, regulations and special offers at any time. We reserve the right to do so without notice. All features and specifications subject to change without notice.

IMPORTANT NOTE ABOUT RESTRICTED OPERATION OUTSIDE OF THE AMERICAS

Units designed for sale in the Americas will have limited Language and Units functionality outside of a zone defined as 30 degrees West longitude on the East and the International Date Line on the West. Language options will be restricted to English (US) only and Units will be restricted to non-metric measures.

Units sold with Enhanced US Basemap, Nautic Insight, Lake Insight or Insight USA units are impacted and will not have this functionality outside of the defined region. Units sold with WorldWide Basemap will function without these restrictions.

Preface

As Navico is continuously improving this product, we retain the right to make changes to the product at any time which may not be reflected in this version of the manual. Please contact your Lowrance dealer if you require any further assistance.

It is the owner's sole responsibility to install and use the instrument and transducers in a manner that will not cause accidents, personal injury or property damage. The user of this product is solely responsible for observing safe boating practices.

NAVICO HOLDING AS AND ITS SUBSIDIARIES, BRANCHES AND AFFILIATES DISCLAIM ALL LIABILITY FOR ANY USE OF THIS PRODUCT IN A WAY THAT MAY CAUSE ACCIDENTS, DAMAGE OR THAT MAY VIOLATE THE LAW.

Governing Language: This statement, any instruction manuals, user guides and other information relating to the product (Documentation) may be translated to, or has been translated from, another language (Translation). In the event of any conflict between any Translation of the Documentation, the English language version of the Documentation will be the official version of the Documentation.

This manual represents the product as at the time of printing. Navico Holding AS and its subsidiaries, branches and affiliates reserve the right to make changes to specifications without notice.

Copyright

Copyright © 2013 Navico Holding AS.

Warranty

The warranty card is supplied as a separate document.

In case of any queries, refer to the brand web site of your display or system: www.lowrance.com

Declarations and conformance

This equipment is intended for use in international waters as well as inland waters and coastal sea areas administered by countries of the USA, E.U. and E.E.A. For more information refer to the separate HDS Gen 2 Touch Installation manual.

About this manual


This manual is a reference guide for operating the Lowrance HDS Gen 2 Touch system. It assumes that all equipment is installed and configured, and that the system is ready to use.

The manual does not cover basic background information about how equipment such as radars, sonars and AIS work. Such information is available from our web site:

www.lowrance.com/en-US/Support/Video-Library/.

Important text that requires special attention from the reader is emphasized as follows:

- **Note:** Used to draw the reader's attention to a comment or some important information.

 **Warning:** Used when it is necessary to warn personnel that they should proceed carefully to prevent risk of injury and/or damage to equipment/personnel.

The software

This manual is written for Lowrance HDS Gen2 Touch Release to Market 2 (RTM2). Please check web site for details on release version.

Touchscreen calibration

If your screen is unresponsive to the touch, or the onscreen response does not align with your touch, you need to calibrate the touchscreen. Refer to "Touchscreen Calibration" on page 123.

Contents

7	Introduction
7	HDS Gen2 Touchscreen and keys
8	The HDS Gen2 Touch home screen
9	Basic operation
9	The power key
9	First time startup
9	Using the touchscreen
10	Menus
12	Dialog boxes
13	Positioning a Man Overboard waypoint
14	Screen capture
15	Pages
15	Page overview
15	Selecting pages, quick splits
16	Selecting Active panel
16	Customizing pages
18	Data Overlay
19	Chart
19	The Chart page
19	Vessel symbol
20	Chart scale
20	Panning the chart
20	Zooming
22	Chart options
26	Chart overlay
27	Chart Settings
28	Navionics chart options
31	Navionics settings
32	Waypoints, routes & trails
32	The waypoints, route and trails screens
34	Routes
36	Trails

37 Navigating

- 37 Goto cursor
- 37 Navigating on the chart
- 38 Navigation settings panel
- 40 Steer page

41 Sonar

- 42 Zooming
- 43 Viewing sonar history
- 45 Log sonar data
- 47 View
- 49 Measuring distance
- 50 Sonar settings
- 52 Installation settings

54 StructureScan HD™

- 54 SideScan
- 55 DownScan
- 56 Zooming
- 56 Viewing StructureScan history
- 58 Log sonar
- 59 Stop sonar
- 59 Network StructureScan
- 59 Structure settings

60 StructureMap™

- 60 Turning on StructureMap overlay
- 60 Selecting Structure Source
- 62 Structure options
- 63 Logging Structure data
- 64 Using StructureMaps with mapping cards
- 65 Scanning Fishing areas

66 The Instruments panels

- 66 The dashboards
- 66 Customizing the Instrument panel

68 Using Video (9" and 12" units only)

- 68 The video page
- 68 Setting up the video page

69	The Alarm system
69	The alarms dialog
71	Acknowledging an alarm
72	Utilities
72	Vessels
73	Sun/moon
73	Trip Calculator
73	Find
73	Alarms
73	Waypoints/routes/trails
74	Tides
74	Satellites
74	Files
76	Settings
77	System Settings
77	Changing system settings
78	Units
79	Using the simulator
79	Simulator mode
79	Demo mode
79	Selecting simulator source files
81	Using the radar (optional)
81	Radar operation modes
82	Adjusting range
83	Measuring range and bearing to a target
85	EBL/VRM
86	Setting a guard zone around your vessel
88	Radar orientation
89	MARPA
92	Radar overlay
95	Using AIS
95	Target symbols
96	Viewing information about AIS targets
97	Vessel alarms
97	The vessel settings panel

99 Networking

- 99 Auto configuration
- 99 Data sources
- 101 Damping
- 102 Device list
- 102 Diagnostics
- 103 NMEA 2000
- 103 NMEA 0183

104 GoFree wireless

- 104 Setting HDS device name
- 104 Setting up the WIFI-1
- 106 Operating the HDS with a wireless device

107 Point 1 antenna

- 107 Point 1 configuration
- 108 Disabling the heading sensor

110 Fuel

- 110 Vessel setup
- 111 Fuel used
- 111 Find fuel

112 SIRIUS™ weather

- 113 Weather symbology
- 115 Weather alarms
- 116 Weather reports
- 117 Animating SIRIUS™ weather graphics

118 Audio

- 118 Enabling audio
- 119 Audio controls
- 120 Using the AM/FM radio
- 121 Using SIRIUS radio

123 Maintenance

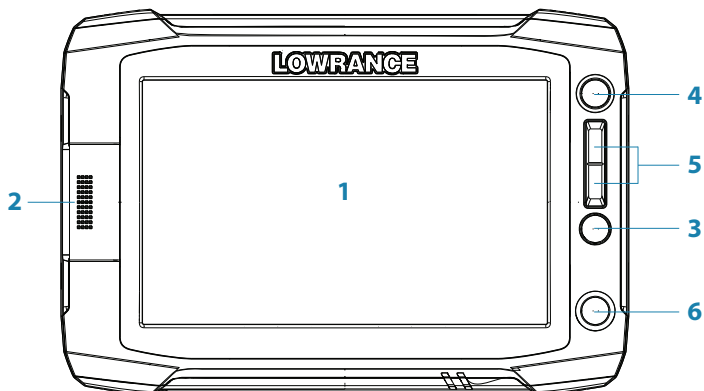
- 124 Backing up your system data

127 Index

1

Introduction

HDS Gen2 Touchscreen and keys



1 Touchscreen

2 SD Card reader

Used for optional InsightHD, Navionics, other compatible third-party cartography, software updates, transfer of user data and system backup.

3 Waypoint key

A short press opens the waypoint menu. A long press opens the Find menu. Press the key twice to quickly save a waypoint.

4 Pages key

A short press displays the home screen. Repeated short presses toggles through favorite pages.

5 IN / OUT / MOB key

Zoom key for chart, radar and sonar pages. A simultaneous press on both keys will position a Man Overboard (MOB) waypoint at the vessel's position.

6 Power key

A long press turns the unit ON/OFF.

A short press brings up the backlight and power dialog. Repeated short presses toggles between preset brightness levels.

The HDS Gen2 Touch home screen



→ **Note:** video is only available on HDS Gen2 Touch 9" and 12" units. The radar option will only be shown when the unit is connected to a radar.

1 Utilities panel

Tap an icon to access utility data.

2 Favorites panel

Used to display Favorite pages, save new Favorites or clear previously configured pages.

3 Pages

Tap a page icon to view the page full screen. Press and hold a page icon to view quick split combo page options.

4 More

Tap to see the full menu.

5 Back button

Tap to exit the home screen and return to the previous page.


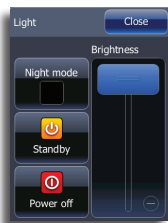
6 Local time

7 Water depth

2

Basic operation

The power key

	<ul style="list-style-type: none">• Press and hold:	Turn unit on/off	
	<ul style="list-style-type: none">• Single press:	Display dialog for brightness adjustment, night mode, standby mode and power off	
	<ul style="list-style-type: none">• Repeated presses:	Toggle preset brightness levels (10 - 6 - 3 - 1)	

→ **Note:** If the power key is released before shut-down is completed, the power off is cancelled.

A night mode which optimizes the color palette for low light conditions, is included.

→ **Note:** Details on the chart may be less visible when Night mode is selected!

When in Standby mode, the sonar and the backlight for touchscreen and keys are turned off to save power. The system will continue to run in the background. To switch from Standby mode to normal operation, press the power key.



First time startup

The device configuration dialog appears when you start up the unit for the first time. It will reappear at the next restart if you select **Maybe later**. Tap **Close** to manually configure settings.

Using the touchscreen

Basic touchscreen operation on the different pages is shown in the table.

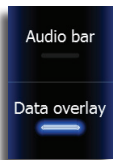
The Pages section later in this manual has more information about page-specific touchscreen operation.

Operation	Menu/Dialogs	Pages		
		Chart	Sonar	Radar
Tap	Select/toggle item	Activate cursor		
Press and hold	n/a	Activate cursor assist mode		
Drag	Adjust slider value Scroll dialog Hide page menu (Drag right)	Pan chart (any direction)	Pan water column (any direction) Pan sonar history (horizontal movement)	Move cursor

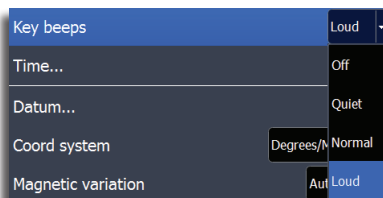
Menus

Menus are used to operate the system and to adjust settings.

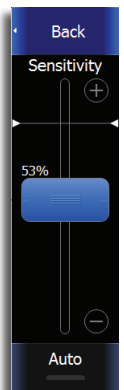
- You select a menu item and toggle on/off menu check boxes by tapping the selected item.
- You adjust slider bar values by dragging your finger on the slide bar. Minor adjustments can be made by tapping above or below the slider bar.
- Drop-down menu items are selected by tapping the item and then the selected value.



Toggle menu



Dropdown menu



Slide bar

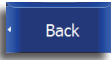
Page menus

Page menus for each operation mode are on the right side of the screen.

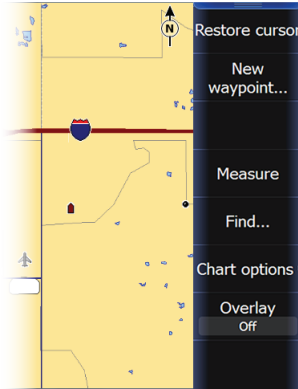
Page menus can be hidden to allow pages to be displayed full screen. Drag the menu to the right to hide the menu.

- ➔ **Note:** When the cursor is active, some features on page menus will be replaced with cursor mode features.

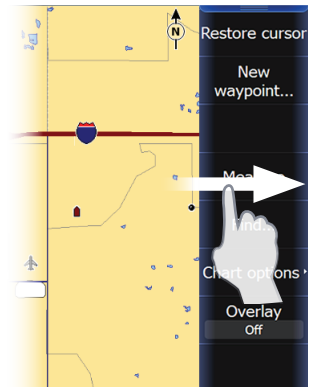
Back button



You can return to the previous screen or menu by pressing the Back button.



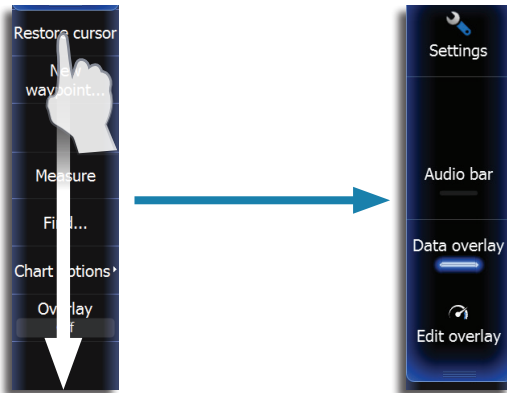
Page menu



Hiding page menu

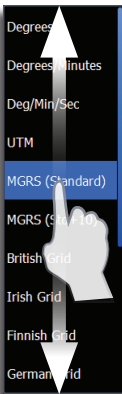
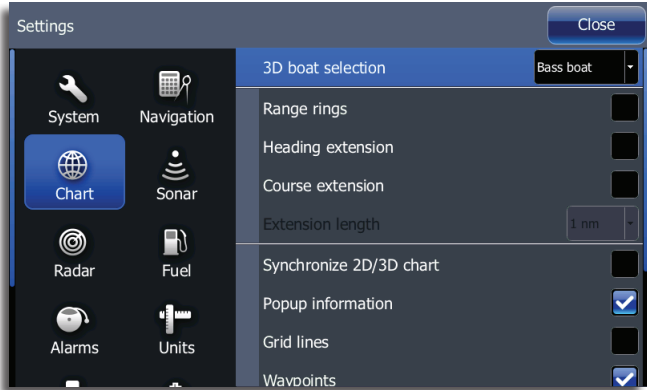
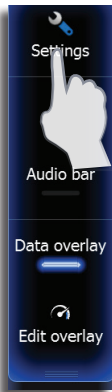
Hidden system menu

The page menu for each operation mode has a hidden system menu. To access the hidden system menu, place your finger on the top menu item and drag down.



Settings dialog

You can access the settings dialog for each operation mode from the hidden system menu or from the Utilities panel on the home screen.



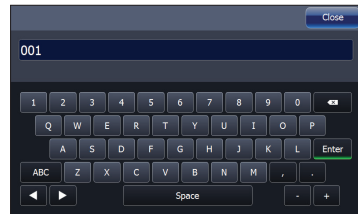
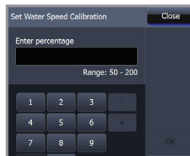
Dialog boxes

You select entry fields and keys in a dialog box by tapping the screen. You can only enter information when a field is selected and highlighted.

Some dialog listings might extend beyond the screen area. These dialogs will include a scroll indicator, and you scroll by dragging the list. A dialog is closed by tapping the **Close** button.

Numeric and alphanumeric keyboards will automatically be displayed when required for entering user information in dialogs.

A virtual keyboard is operated by tapping the virtual keys.



Using the cursor

The cursor is by default not shown on any page. Tap the screen to activate the cursor on the chart, sonar, structure and radar pages.

The cursor information window will show position coordinates at the cursor position and range and bearing to the vessel.

On the Sonar page, the cursor information window will include the corresponding surface temperature and the depth at the cursor position.

To remove the cursor and cursor window from the page, tap the **Clear cursor** button.

On the Chart page, tap **Restore cursor** to display the cursor in its previous location. Restore cursor is a useful feature for toggling between your current boat location and the cursor position.

N 31°06.255'
W 94°01.238'
8.75 mi, 87 °M

Clear cursor

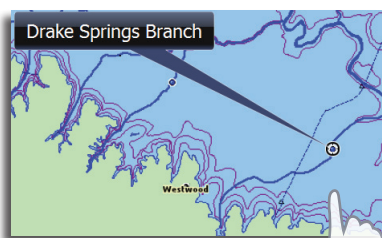
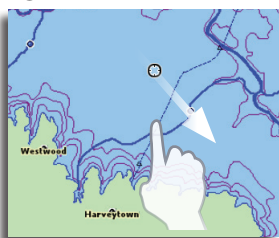
Restore cursor

Panning

You can pan the chart, sonar and structure screens by dragging your finger in any direction.

Cursor assist mode

Press and hold your finger on the screen to switch the cursor to selection mode. The selection tool will appear above your finger. Drag the selection tool over the desired item.

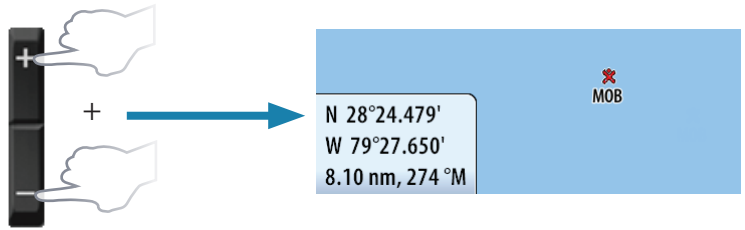


Positioning a Man Overboard waypoint

If an emergency man overboard situation should occur, you can position a Man Overboard waypoint at the vessel's current position by pressing both zoom keys simultaneously.

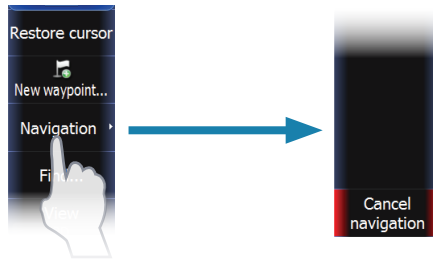
When you activate the MOB function the following actions are automatically performed:

- a MOB waypoint is positioned at the vessel's position
- the display switches to a zoomed chart page, centered on the vessel position
- the unit displays navigation information back to the MOB waypoint



Cancel navigation

The unit will continue navigating toward the MOB waypoint until the waypoint is reached or until you cancel navigation.



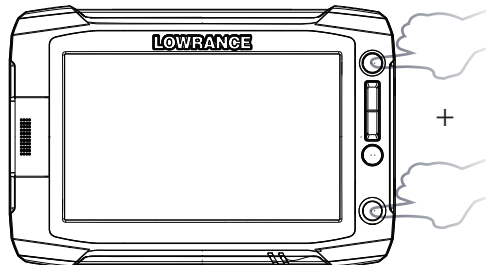
Delete a MOB waypoint

1. Cancel navigation.
2. Tap **Waypoint MOB** on the page menu.
3. Tap **Delete**.

Screen capture

Simultaneously press and hold the **PAGES** and **POWER** keys to take a screenshot. By default, screen captures are saved to internal memory.

Refer to the Utilities section of this manual for information on viewing screen captures and saving files to a SD card.



3

Pages

Page overview

This unit supports up to 7 page types. Each has a corresponding group of preconfigured quick split combo pages.

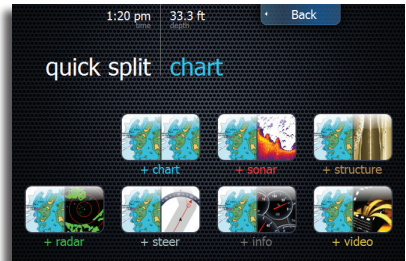
- **Note:** Video is available only on 9" and 12" units. The radar option will only be shown when the unit is connected to a radar.



Quick splits are two-panel combination pages featuring the selected page combined with each of the other pages. Quick splits can not be modified, but you can select/save your own page combination using the Favorites feature. You can save up to 10 favorites. Pages, quick splits and favorites are all accessed from the homescreen.

Selecting pages, quick splits

Tap a page icon to view the page full screen. Press and hold a page icon to view quick split combo page options.



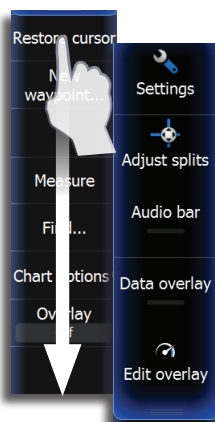
Selecting Active panel

You can change active panels by tapping the desired panel. The active panel will have an orange border.



Adjusting splits

The size of panels can be adjusted by tapping **Adjust splits** on the hidden system menu. Drag the adjustment button horizontally to resize the panels. Tap **Save** to confirm changes.

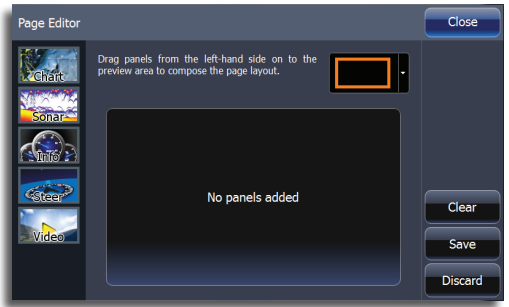
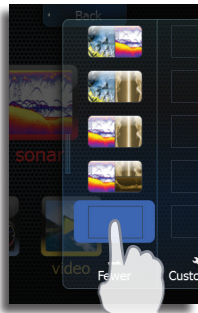


Customizing pages

Saving Favorites

You can save and edit Favorite pages from the page editor screen.

1. Tap an empty Favorites icon on the Favorites panel or tap **Customize** to modify an existing favorite
 - The Page editor panel will be displayed
 2. Drag and drop page icons to set up your custom screen
 3. Select a panel configuration
 4. Save the page layout by tapping **Save**.
- ➔ **Note:** Tap **Clear** to cancel changes and select a new panel configuration. Tap **Discard** to cancel changes and return to the homescreen.



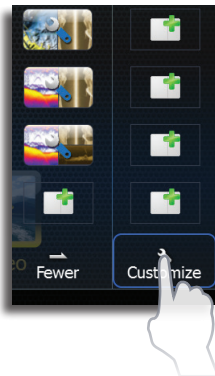
You can select from seven different panel configurations as illustrated below.



→ **Note:** You can cycle through favorite pages by pressing the **PAGES** key.

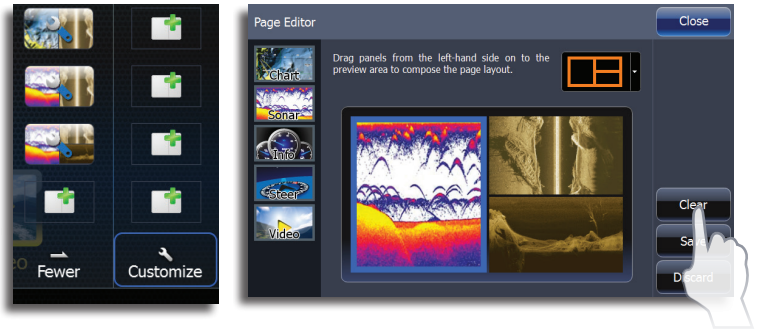
Editing favorites

1. Tap **Customize** on the Favorites panel
2. Tap an existing favorite
3. Drag a page icon from the preview
4. Tap **Save**



Deleting favorites

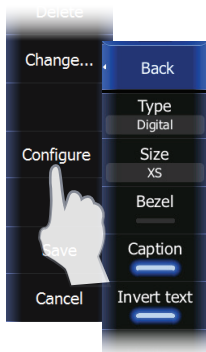
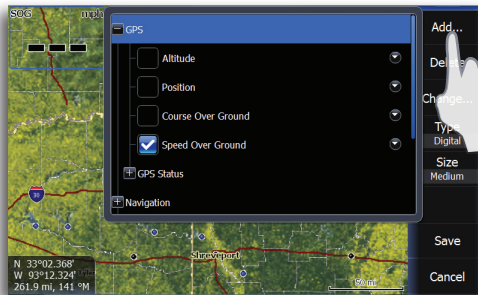
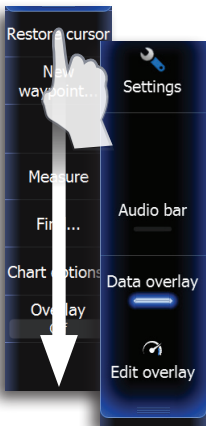
1. Tap **Customize** on the Favorites panel
2. Tap the page icon for the page you want to remove
3. Tap **Clear** and tap **Save**



Data Overlay

Allows you to overlay information on the active page. You can turn on/off viewing of overlay data and edit/add overlay data by accessing the hidden system menu from any page screen.

1. Access the hidden system menu
2. Tap **Edit overlay** and tap **Add**
3. Select a data category
4. Tap the data you want to overlay
5. Drag the overlay data into the desired position on the page
6. Tap **Save**



Customizing overlay data

You can toggle the overlay data type between an analog and digital display, select data size, and change previously configured data from the Edit overlay configuration menu.

4

Chart

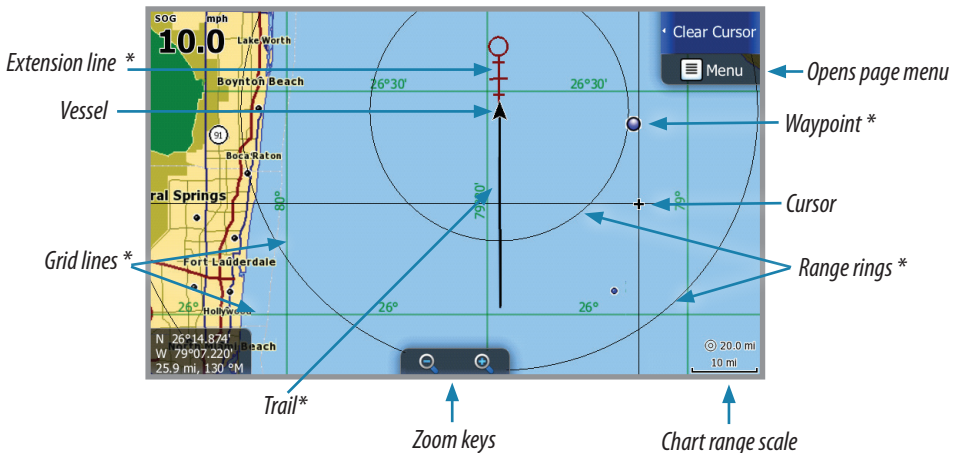
The chart page displays your position relative to land and other chart objects. On the page you can plan and navigate routes, place waypoints, overlay a radar image, a StructureMap image and weather information, and display AIS targets.

→ **Note:** This unit has different embedded cartography depending on the region.

The first part of this section describes how to use the charts, and is common to both Insight and Navionics. Chart options depend on which cartography is in use on the unit.

The Chart page

* Optional chart items



→ **Note:** You turn the optional images on/off individually. Refer to Chart settings later in this section.

Vessel symbol



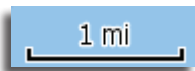
When a GPS and a suitable heading sensor are connected to the system, the vessel symbol indicates vessel position and heading.

Without a heading sensor installed, the icon will position itself using COG (Course over Ground). If no GPS is available the vessel symbol will include a question mark.

Chart scale

You zoom in and out on the chart by using the **ZOOM** keys.

Chart range scale and range rings interval (when turned on) will be shown in the lower right corner of the chart panel.



Using the cursor on the chart page

The cursor is by default not shown on the chart page.

When you tap the screen, the cursor will become visible and the cursor position window will be activated. When the cursor is active, the chart will not follow the vessel.

Press and hold the screen to activate cursor assist mode. Cursor assist places the cursor above your finger and stops chart scrolling to allow for accurate placement of waypoints.

To remove the cursor and cursor window from the chart, tap **Clear cursor**. Tap the **Restore cursor** button to reactivate the cursor and cursor window.

N 30°16.811'
W 93°03.277'
87.2 mi, 128 °M

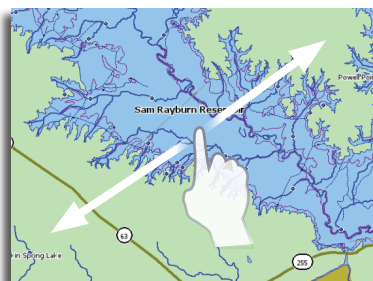
Goto cursor

You can navigate to the cursor by tapping **Goto cursor** on the menu.

Panning the chart

You can move the chart in any direction by dragging your finger in any direction.

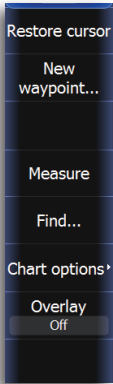
Tapping **Clear Cursor** will remove the cursor from the page, and the chart center will be positioned at the vessel.



Zooming

You zoom in/zoom out the chart by tapping the onscreen **Zoom** keys. You Zoom in to see less of the map with more detail; zoom out to see more of the map with less detail. You can also use the dedicated +/- keys to zoom.





No cursor

Chart menu

When the cursor is active, some features on the chart menu will be replaced with cursor mode features.

Tap **Clear cursor** to return to the normal chart menu.

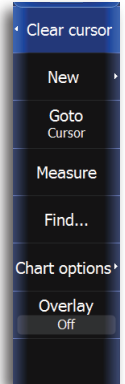
Saving waypoints

When the cursor is not active, you can save a waypoint at the vessel position by tapping **New waypoint** on the chart menu.

Using the touchscreen to save a waypoint at the cursor:

1. Tap the desired location on the screen
2. Tap **New** on the chart menu
3. Tap **New waypoint** and tap **Save**

→ **Note:** You can also save a waypoint by pressing the dedicated **WAYPOINT** key twice. With the cursor active, the waypoint will be saved at the cursor position. When the cursor is inactive, the waypoint will be saved at the vessel position.



Active cursor

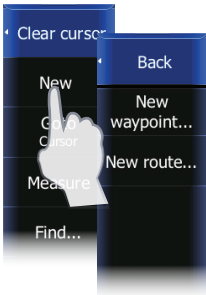
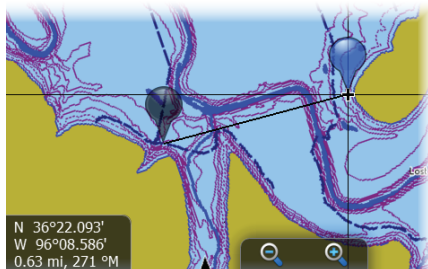
Creating routes

You can quickly create routes on the chart page.

1. Tap the screen to activate the cursor
2. Tap **New** on the menu
3. Tap **New route**
4. Tap the screen to position the first routepoint. Tap the screen to place more routepoints
5. Save the route by tapping **Save** on the menu

Measuring distance

The cursor can be used to measure the distance between your vessel and a selected position, or between two points on the chart.

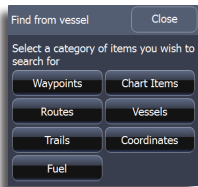


→ **Note:** To measure distance from your vessel, tap the desired location on the map and the distance to that location will be shown in the info box in the lower left corner of the screen.

1. Tap the screen and then tap **Measure** on the menu
 - The measuring icons will appear with a line drawn from the vessel center to the cursor position, and the distance will be listed in the info box.
2. Drag one of the map pins to the desired point. The distance between the two points will be shown in the info box.

You can turn off the measuring function by tapping **Finish measuring** on the menu.

→ **Note:** You can use the measure function in conjunction with cursor assist mode to accurately position the map pins.



Find

You can search for items on the chart by using the Find feature. Tap the desired location on the screen to search from the cursor position. Clear the cursor from the screen to search from the vessel position.

→ **Note:** You must have a SIRIUS data package subscription to search for Fueling stations and an AIS receiver to search for vessels.

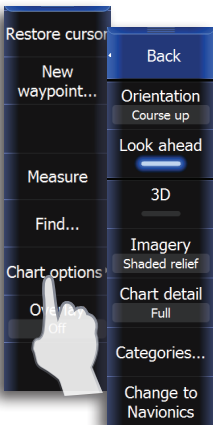


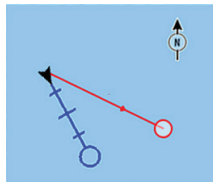
Chart options

Orientation

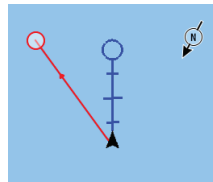
Several options are available for how the chart is rotated on the page. The chart orientation symbol in the upper right corner of the page indicates the north direction.

North up

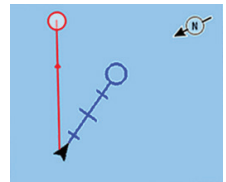
Displays the chart with the north direction upward. Corresponds to the usual orientation of nautical charts.



North up



Heading up



Course up

Heading up

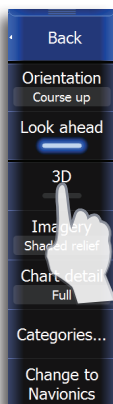
Displays the chart with the vessel's heading directly up on the chart image. Heading information is received from a compass. If heading is not available, then the COG from the GPS will be used.

Course up

Rotates the chart in the direction of the next point when in navigation mode. If the unit is not in navigation mode the heading up orientation will be used until you start navigating

Look ahead

This option centers the chart slightly forward of your vessel so you can maximize your view ahead.



3D

You can toggle the view on the chart between 2D and 3D by tapping the 3D button.

3D chart view options

There are two 3D views available:

- Rotate - default mode keeping the boat in center on the chart panel
- Pan - allows you to move the 3D chart view away from the vessel

You toggle between these two modes by pressing **Camera** on the menu or by tapping the pan and rotate icons at the top of the screen.

Rotate mode



In this mode the camera follows the vessel. The vessel's position will be in center if Look Ahead is not selected.

The camera angle is by default as seen from your eye position, looking toward the vessel. The vessel's rotation on the chart is defined by the chart orientation settings.

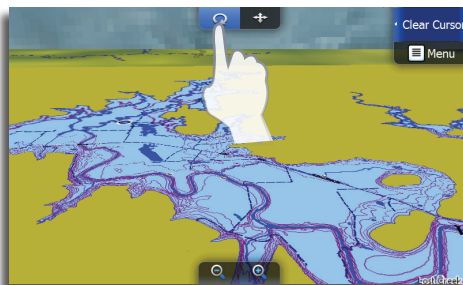


Chart tilted in rotate mode

You can change the camera tilt angle and rotate the camera around the vessel by dragging your finger on the screen.

→ **Note:** When in rotate mode, use horizontal motions to rotate the vessel. Use vertical motions to change the viewer perspective.

When rotate is selected the camera position is fixed, and the camera can only be rotated and tilted. You rotate and tilt the camera by tapping and dragging your finger on the screen.

Pan mode



You switch from Rotate mode to Pan mode by tapping **Camera** on the menu or by tapping the rotate icon at the top of the screen.

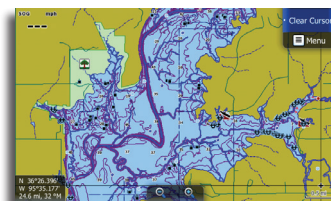
The Rotate mode allows you to view the entire 3D chart, regardless of vessel position.

You can rotate and move the camera (pan) away from your vessel. You switch between panning and rotating camera motion by tapping the icons on the right side of the chart panel.

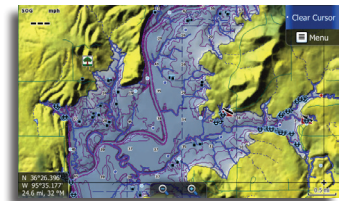
When pan is selected, you move the camera away from the vessel and around in the chart by tapping and dragging on the screen. When you remove your finger from the chart the view will remain in the selected position.

Imagery

Lowrance mapping can be displayed in two different imagery styles, either as 2D basic mapping style, or with shaded relief presenting chart including terrain imaging.



2D mapping



Shaded relief

Chart detail

Low

This is the basic level of information that includes information that is required in all geographic areas. It is not intended to be sufficient for safe navigation.

Medium

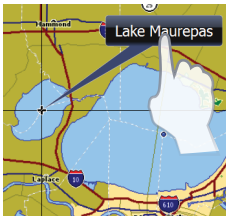
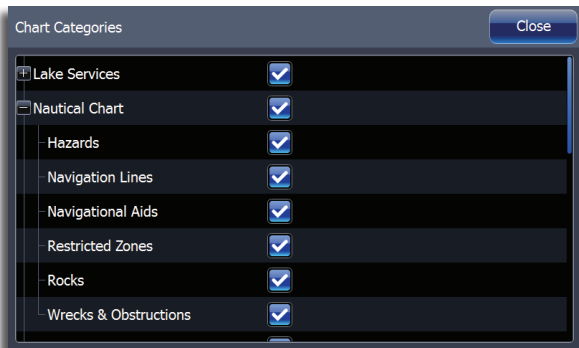
This is the minimum information sufficient for navigation

Full

This is all available information for the chart in use

Categories

Insight charts includes several categories and sub-categories that you can turn on/off individually depending on which information you want to see on your display.

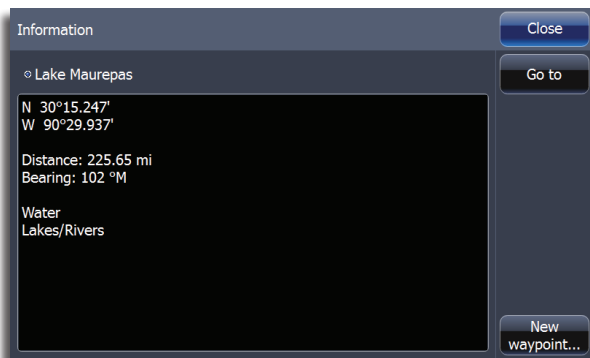


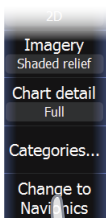
Displaying information about chart and chart objects

When you tap a chart item, a waypoint, a route or a target, basic information about the item will appear on the screen and an Info button will appear on the page menu.

Tap the onscreen basic information display or tap the **Info** button to view all available information for the item.

→ **Note:** Popup information has to be enabled to see basic item information.





Selecting chart data

This unit can use built-in Lowrance map data as well as Navionics, Fishing Hotspots, Jeppesen and other third-party mapping cards. Tap **Change to Navionics** or **Change to Lowrance** to switch chart data the unit is using.

→ **Note:** The system will not automatically switch to embedded cartography if the SD card is removed. A low-resolution chart will be displayed until you re-insert the SD card or manually switch back to embedded cartography. When a third-party mapping card is inserted, the system will prompt you to switch to SD card cartography, if the unit is not in the correct chart mode.

Sharing Chart data

You can share charts across the Ethernet network. Chart Sharing allows a user to insert a compatible chart card from Lowrance, Navionics, Jeppesen or other provider into a display on the Ethernet network and view the chart information on any other compatible display on the network.

Chart overlay

Radar, StructureMap and weather information can be displayed as overlay on the chart page.

→ **Note:** Weather overlay currently is only available in the United States. When radar, weather or StructureMap overlay is selected, the chart context menu will be expanded to include basic functions for the selected overlay.

Radar, StructureMap and SIRIUS weather functions are described in separate sections in this manual.

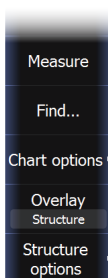
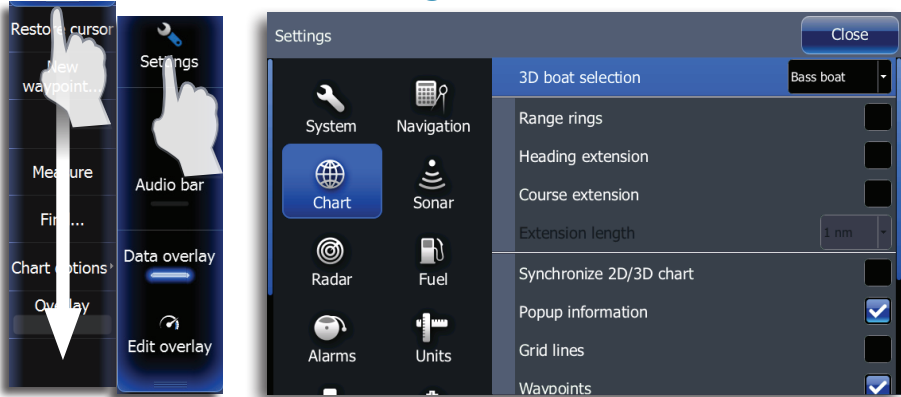


Chart Settings



3D boat selection

You can select different boat icons that will be used as the current position symbol when the chart is in 3D mode.

Range Rings

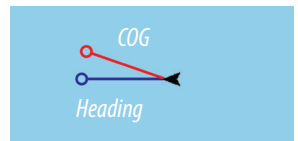
You can turn on/off range rings from the chart settings menu.

The range rings can be used to show the distance from your vessel to other chart objects. The range scale is set automatically by the system to suit the chart scale.

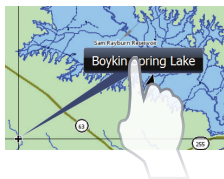
Heading and Course extension

The length of the extension lines are either set as a fixed distance, or to indicate the distance the vessel will move in the selected time period.

Vessel heading extension is aligned with direction the vessel's bow is pointing. COG extension points the direction the vessel is moving. If there is no heading sensor, heading will default to the COG value.



For other vessels COG data is included in the message received from the AIS system.



Pop-up information

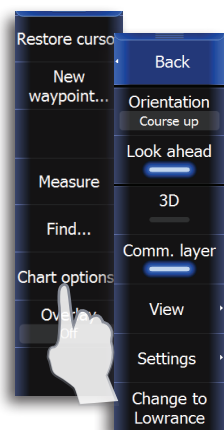
Selects whether basic information for chart items shall be displayed when you tap the item.

Grid lines

Turns on/off viewing of longitude and latitude grid lines on the chart.

Waypoints, routes and trails

You can turn on/off viewing of waypoints, routes and trails on the chart.



Navionics chart options

To view Navionics data, you must insert a Navionics mapping card into the SD card slot on the front of the unit. The system will prompt you to switch to SD card cartography when a card is inserted.

You can share Navionics charts with other units on your Ethernet network. Refer to “Sharing Chart data” on page 26.

Orientation

Several options are available for how the chart is rotated on the page. The chart orientation symbol in the upper right corner of the page indicates the north direction.

Look ahead

This option centers the chart slightly forward of your vessel so you can maximize your view ahead.

3D

The Navionics chart database provides you with detailed coastal cartography, with 2D and 3D view options.

- 2D presents chart information in a basic mapping mode with Navionics details
- 3D provides a three dimensional graphical view of land and sea contours

Synchronize 2D/3D chart

Links the position shown on one chart with the position shown on the other chart when a 2D and a 3D chart are shown side by side. You can turn on/off Synchronize 2D/3D from the chart settings menu when Navionics is the selected chart data.

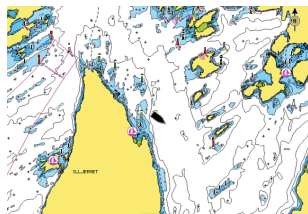
Community layer

Turns on/off viewing of user generated data downloaded from the Navionics website.

View

Shading

Shading adds terrain information to the chart.



Traditional 2D chart

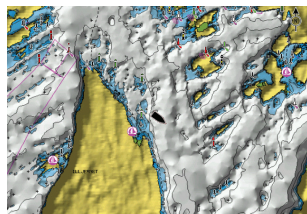


Chart with shading

Dynamic Icons

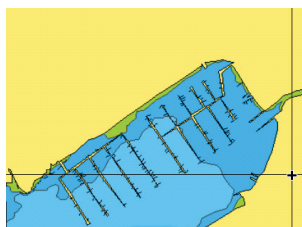
Changes traditional stations to animated icons showing current direction, strength and tide levels

Easy view

Increases the size of cartography on the screen, as though user was using a magnifying glass

Photo overlay

Photo overlay enables you to view satellite photo images of an area as an overlay on the chart. The availability of such photos is limited to certain regions and only available on certain Navionics mapping cards. You can view photo overlays in either 2D or 3D modes.



No Photo overlay

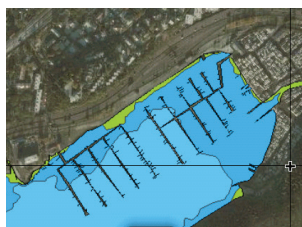
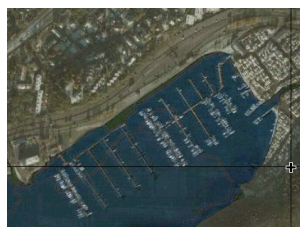


Photo overlay, land only



Full Photo overlay

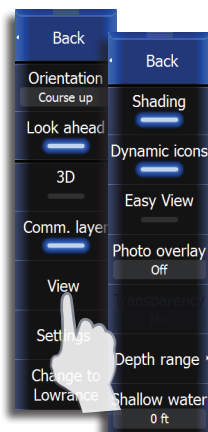


Photo transparency

The Photo transparency sets the opaqueness of the photo overlay. With minimum transparency settings the chart details will be almost hidden by the photo. With maximum transparency settings the photo will be almost hidden by the chart details.



Minimum transparency



Maximum transparency

Depth range (highlighting)

Allows user to specify a range of depths to be highlighted. Depths will be rounded to the closest contour interval available. The maximum depth range value must be greater than the minimum depth range value.

Shallow water highlighting

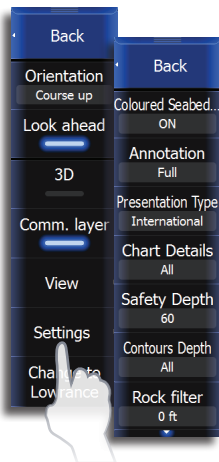
Displays pink dots for Shallow areas up to a 30-foot range.

Navionics Fish'n Chip

This unit supports Navionics Fish'n Chip (US only) chart feature. For more information, see www.navionics.com.

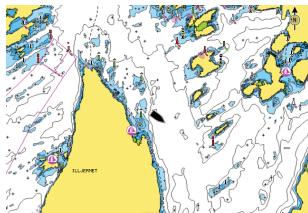
Change to Lowrance

Switches map display from Navionics to Lowrance mapping data.



Navionics settings

Optional settings for Navionics charts



Traditional 2D chart

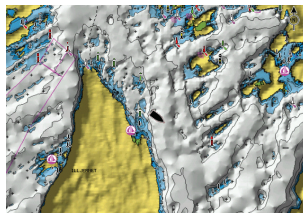


Chart with shading

Colored Seabed Areas

Colors different parts of the seabed to provide better definition of seabed composition.

Annotation

Determines what area information, such as names of locations and notes of areas, is available on display.

Presentation type

Provides marine charting information such as symbols, colors of the navigation chart and wording for either International or US presentation types.

Chart details

Provides you with different levels of geographical layer information.

Safety depth

The Navionics charts uses different shades of blue to distinguish between shallow and deep water.

The safety depth sets the limit for which depths that shall be drawn without blue shading.

Contours depth

Determines which contours you see on the chart down to the selected safety depth value.

Rock filtering

Filters rocks below a certain depth

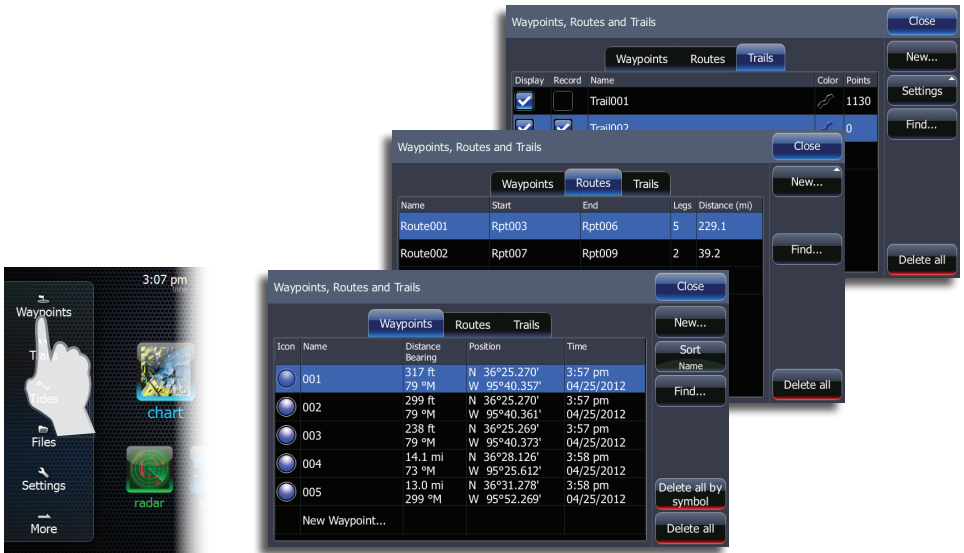
5

Waypoints, routes & trails

The waypoints, route and trails screens

The Waypoints, Routes and Trails dialogs give access to advanced edit functions and settings for all these items available on your system. Waypoint, route and trail screens are accessed from the homescreen or by pressing and holding the **Waypoint** key.

The edit and settings options are accessed from the menu or by pressing and holding the unit's dedicated waypoint key.



Waypoints



A waypoint is a user generated mark positioned on a chart, on a radar image or on a sonar image. Each waypoint has an exact position with latitude and longitude coordinates. A waypoint positioned on a sonar image, will in addition to position information have a depth value.

A waypoint is used to mark a position you later may want to return to. Two or more waypoints can also be combined to create a route.

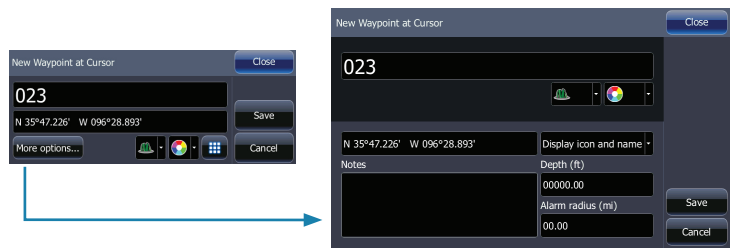
Positioning waypoints

Placing a waypoint at vessel position

With the cursor inactive, you can position a waypoint at the vessel position from any page by pressing the dedicated **WAYPOINT** key twice.

Using the cursor to position waypoints

On chart, sonar and structure pages you can place a waypoint at the cursor position by tapping the screen and then tapping **New waypoint** on the menu. Tap **Save** on the waypoint dialog to create the waypoint.



→ **Note:** With the cursor active, you can press the physical **WAYPOINT** key twice to save a waypoint at the cursor position.

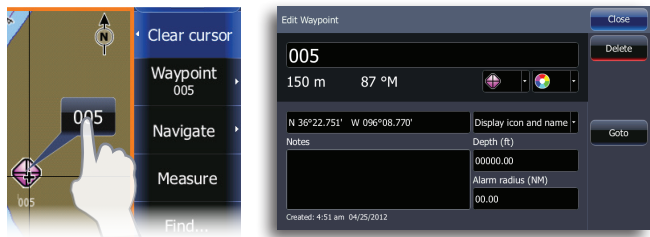
Edit waypoints

A selected waypoint can be moved, edited or deleted from the chart page menu or from the waypoint dialog.

Using the edit waypoint dialog

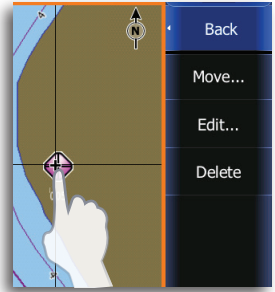
This dialog is activated by tapping the waypoint and then tapping the waypoint name display on the screen.

The dialog can also be activated from the Waypoint list.



Moving a waypoint by tapping the screen

1. Tap the waypoint
 - The waypoint name will appear on the page menu
2. Tap the waypoint name
3. Tap **Move** on the menu
 - The waypoint icon will change to indicate moving mode
4. Drag the waypoint to its new position
5. Confirm the new position by tapping **Save** on the menu



Waypoint alarm settings

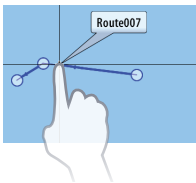
You can set an alarm radius for each waypoint you create.

- **Note:** The waypoint radius alarm must be toggled ON in the alarm screen to activate an alarm when your vessel comes within the defined radius.

Exporting waypoints

You can export all waypoints or only waypoints from a selected region to a SD card. Refer to “Export region” on page 126.

- **Note:** Review the User data format compatibility table “One or more functions do not operate as normal” on page 124 to select the best data format for legacy units.



Routes

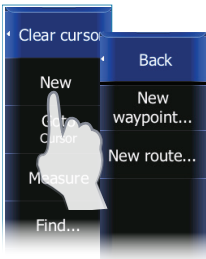
A route consists of a series of routepoints entered in the order that you want to navigate them.

When you tap on an existing route the route name will be displayed.

Creating new route from chart page

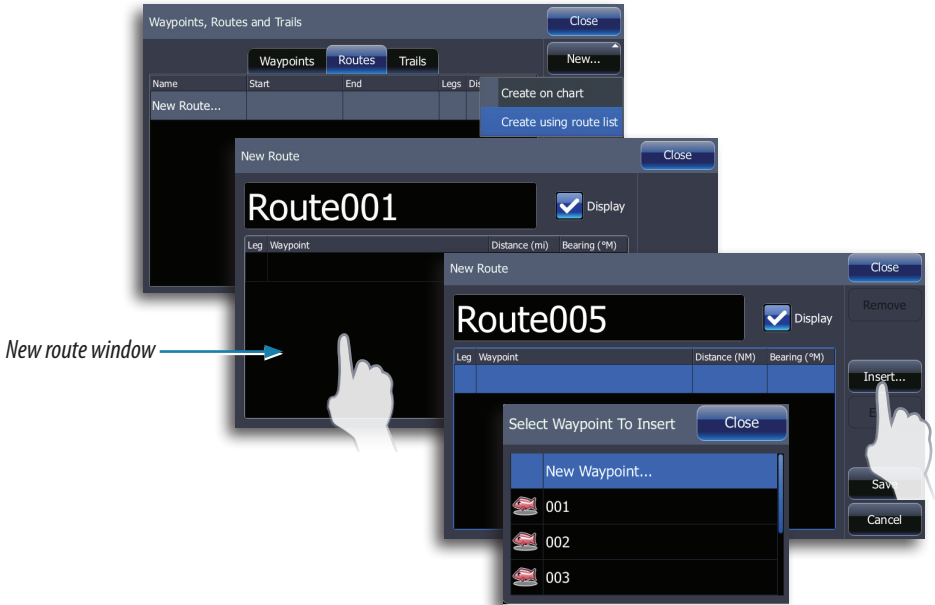
Routes can be created directly from the chart or by inserting waypoints from the routes dialog.

1. Tap the chart screen to activate the cursor
2. Tap **New** on the page menu
3. Tap **New route**
4. Tap the screen to position routepoints
5. Tap **Save** on the menu



Creating routes using existing waypoints

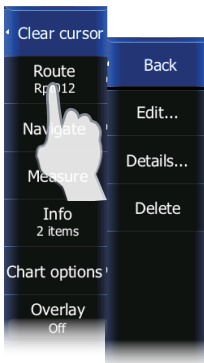
1. Access the routes dialog
2. Tap **New**
3. Tap **Create using route list**
4. Tap the new route window (shown below)
5. Tap **Insert**
6. Tap the desired waypoint
7. Repeat Steps 4, 5 and 6 until all points have been placed
8. Tap **Save**

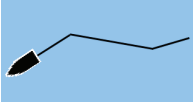


Edit a route

A route and a waypoint can only be edited from the chart page when the item is selected.

1. Tap the route name
2. Tap the route name on the menu
3. Tap **Edit**
4. Tap the screen to add routepoints
 - If you tap on a leg a new point will be added between existing routepoints
 - To move existing routepoints, drag them to the desired location
5. Tap **Save** on the menu





Trails

A trail is a graphical presentation of the historical path of the vessel, allowing you to retrace where you have traveled. A trail can be converted to a route in the Trail screen, as described later in this section.

From the factory, the system is set to automatically draw a trail. The system will continue to record the trail until the trail length reaches the maximum trail point setting, and will then automatically begin overwriting the oldest trail points.

The automatic trail function can be turned off from the Trail screen described later in this section.

Creating a new trail

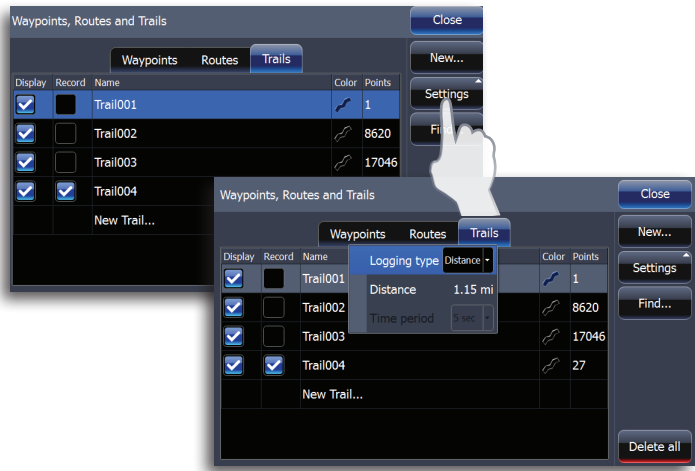
Tap **New** on the Trails dialog and tap **Save** to create a new trail. Trail settings are defined on the Trail Settings dialog described below.

Trail settings

The trail is made up of a series of trail points connected by line segments.

You can select to record trail points based on time, distance or by letting the unit position a point automatically when a course change is registered.

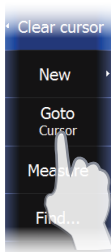
→ **Note:** The Trails option must also be turned ON in the chart settings to be visible.



6

Navigating

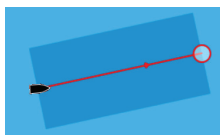
The navigation function included in your unit allows you to navigate towards the cursor position, a waypoint or along a predefined route. For information about positioning waypoints and creating routes, refer to “Waypoints, routes & trails” on page 32.



Goto cursor

You can navigate to the cursor from the chart, radar, sonar or structure pages by activating the cursor and tapping **Goto cursor** on the menu.

→ **Note:** The Goto cursor option will only be available when the cursor is active on a page.



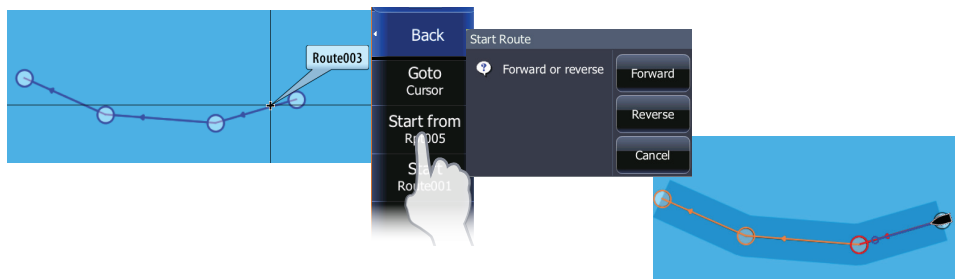
Navigating on the chart

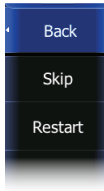
Navigate a route

You can start navigating a route by tapping the route and then tapping **Navigate** on the menu.

Routes can be navigated forward, from the first routepoint to the last routepoint, or in reverse starting with the last routepoint and finishing with the first routepoint.

When navigating a route, the active route leg will be colored red. The red arrow on the route leg shows the selected navigation method (forward or reverse) you are using to navigate the route. Upcoming route legs are colored orange.





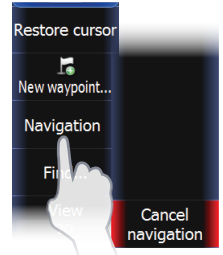
When route navigation is started, the menu will expand showing options for skipping a waypoint, or for restarting the route from current vessel position.

Selecting start point

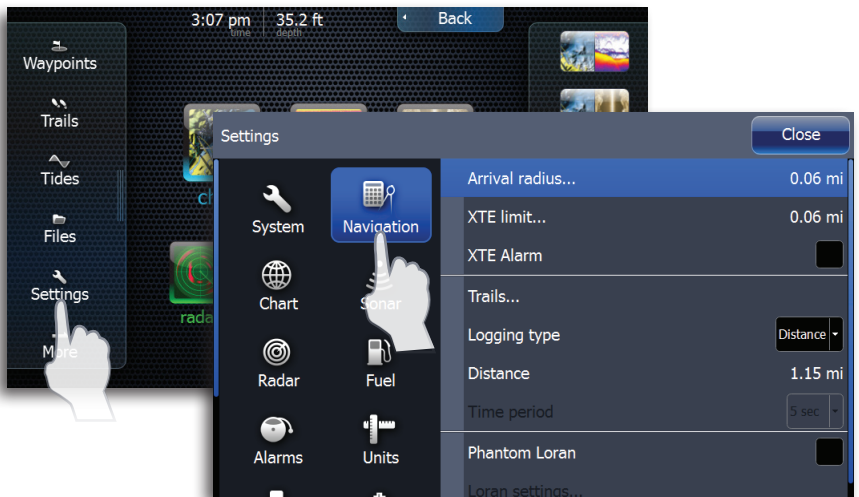
You can navigate a route, starting from any routepoint, by positioning the cursor over the selected routepoint and tapping the routepoint name on the menu. You can start navigating the route from the first or last routepoint (forward or reverse), or from a selected routepoint.

Cancel navigation

You cancel navigation from the **Navigation** menu.



Navigation settings panel



Arrival radius

Sets an invisible circle around the destination waypoint.

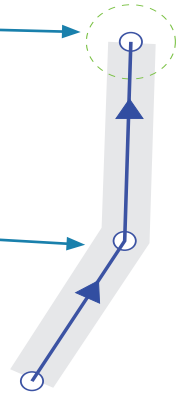
The vessel is considered arrived at the waypoint when it is within this radius.

XTE limit (Cross track error)

This parameter defines the vessel's accepted offset distance from the leg. If the vessel goes beyond this limit an alarm will be activated.

XTE alarm (Cross track error)

Turns on/off the XTE alarm.



Trails

Opens the Trails dialog where trails settings can be adjusted and trails can be converted into routes for navigation.

Create route

1. Select a trail on the Trails dialog
2. Tap **Create route**
 - When the route has been created, the Edit routes dialog will appear.
3. Tap **Start**
4. Tap the way you want to navigate the route (Forward or Reverse)

Logging Type

You can select to record trail points based on time, distance or by letting the unit position a point automatically when a course change is registered.

Phantom Loran

Estimates Loran TDs based on GPS position, the selected GRI and preferred station.

Loran settings

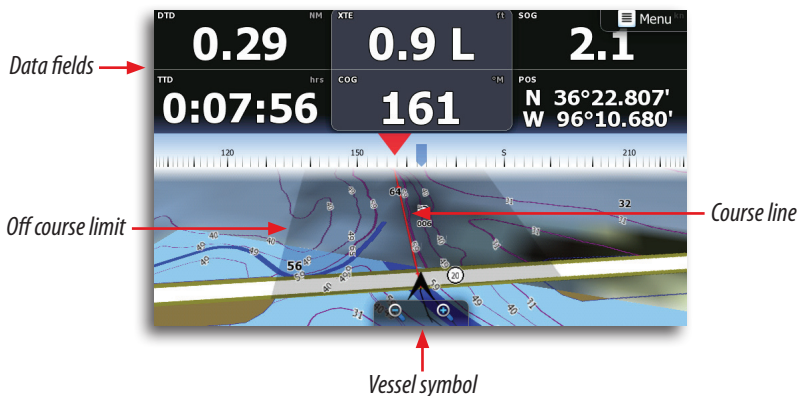
Defines Loran chains (GRI) and preferred station for waypoint entry and cursor position. The graphic example shows cursor position window with Loran position information.

N 25°44.044'
W 80°08.285'
43132.70 7980
62156.66
0.30 nm, 254 °M

For more information refer to your Loran system documentation.

Steer page

The Steer page can be used to display information when you are navigating.



Data fields

The Steer page displays the following information:

DTD	Distance to destination
XTE	Cross track error
SOG	Speed over ground
TTD	Time to destination
COG	Course over ground
POS	Position

The course line

When traveling on a route the course line shows the intended course from one waypoint towards the next. When navigating towards a waypoint (cursor position, MOB or an entered lat/lon position), the course line will show the intended course from the point at which navigation was started towards the next waypoint.

Vessel symbol

The vessel symbol indicates distance and bearing relative to the intended course.

Off course limit

If the XTE exceeds the defined off course limit this will be indicated with a red arrow including the distance from the track line.

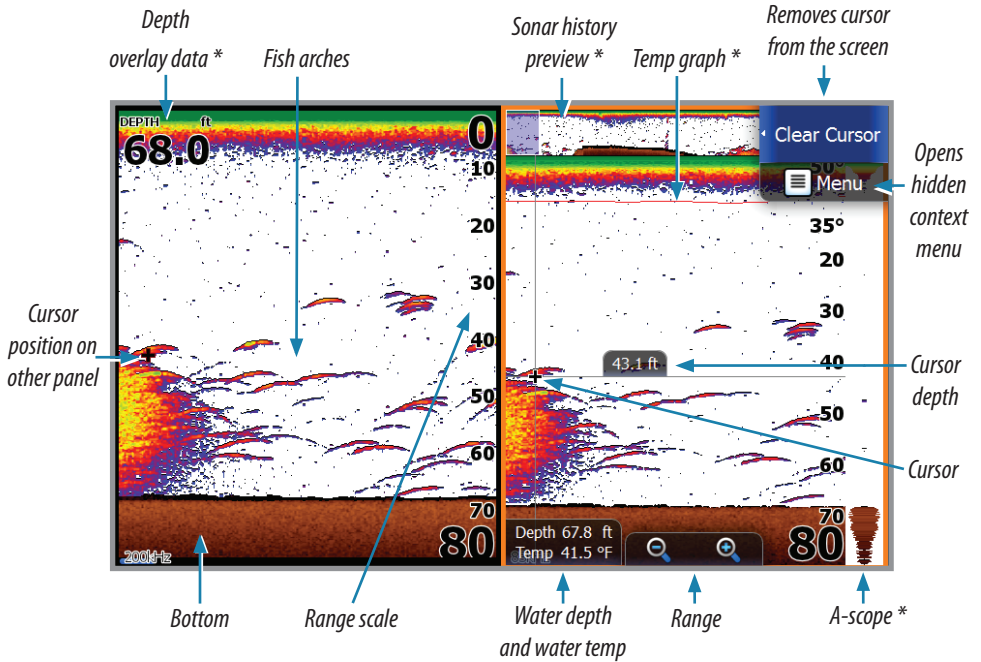
If the off course alarm is enabled, the alarm will activate if the XTE exceeds the defined off course limit.

7

Sonar

The sonar function provides an underwater view of the area under and around your boat, allowing you to detect fish and examine bottom structure.

The sonar displays the water column moving from right to left on the page.



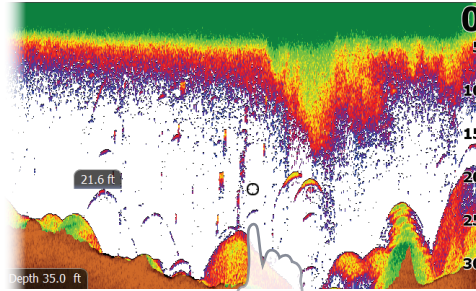
You can select between single page view and several split views as described later in this section.

* Optional sonar image items

Using the cursor on the sonar page

The cursor is by default not shown on the sonar screen. When you tap the screen the cursor will appear and the depth at the cursor position will be shown, the information window and history bar will be activated.

To remove the cursor and cursor elements from the page, tap **Clear cursor** on the Sonar menu.



Press and hold the screen to activate cursor assist mode.

Goto cursor

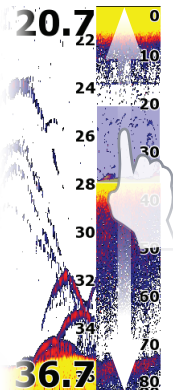
You can navigate to the cursor by tapping Goto cursor on the menu.

Saving a waypoint

You can save a waypoint at the cursor position by tapping the screen and then tapping New waypoint on the sonar menu. Tap **Save** on the waypoint dialog to create the waypoint.

When the cursor is not active, press the physical **WAYPOINT** key twice to save a waypoint at the vessel position.

Zooming



The dedicated **ZOOM** keys are used to zoom in on the water column. When zooming in, the bottom will be kept near the bottom of the screen, irrespective of whether it is in auto-range or manual range.

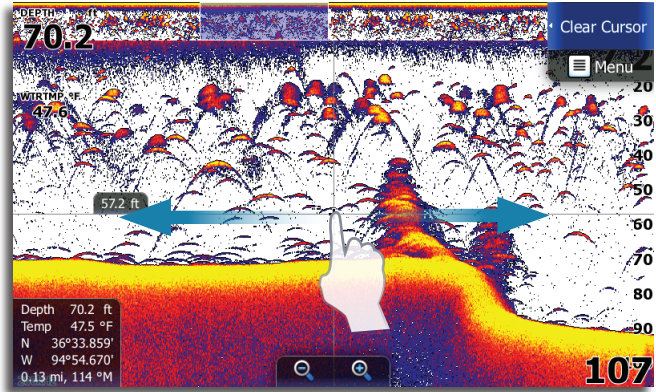
If the cursor is active, the unit will zoom in where the cursor is pointed.

Zoom bars

Zooming in with the dedicated zoom keys will launch the Zoom bar. Drag the Zoom bar vertically to view different parts of the water column.

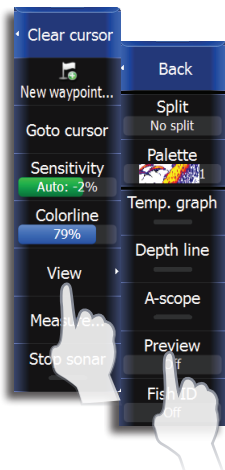
Viewing sonar history

You can view sonar history by activating the cursor and then dragging your finger horizontally across the screen. Whenever the cursor is activated on the sonar page, the blue sonar history scroll bar will appear at the bottom of the screen. The scroll bar shows the image you are currently viewing in relation to the total sonar history stored.



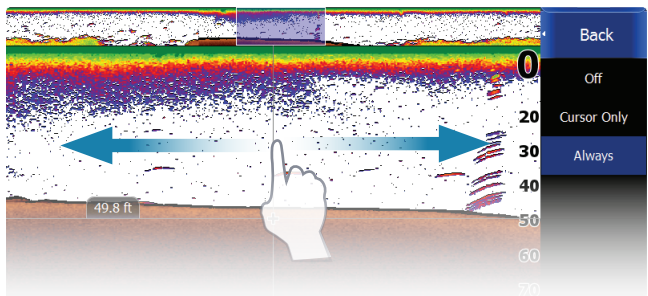
The scroll bar on the far right side indicates that you are viewing the latest soundings. If you position the cursor to the left side of the screen, the history bar will start scrolling toward the left, and the automatic scrolling as new soundings are received will be turned off.

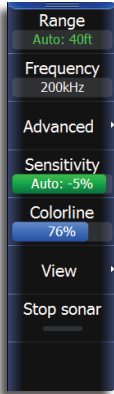
You can pan the image history by dragging left/right on the screen.



Preview

You can have all available sonar history shown at the top of the sonar screen. The Preview bar is a snapshot of available sonar history. You can scroll through sonar history by dragging the preview slider horizontally. Preview is turned on by default.





No cursor

Sonar menu

When the cursor is active, some features on the sonar menu will be replaced with cursor mode features.

Tap **Clear cursor** to return to the normal sonar menu.

Range

The range setting determines the water depth that is visible on the screen.

Tap the range keys on the touchscreen to adjust the range.

Auto range

If you select Auto, the system will automatically display the whole range from the water surface to the bottom.

Custom range

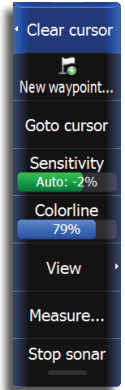
This option allows you to manually set both upper and lower range limits. The sonar will limit searches to the selected range so bottom depth information may not be displayed if bottom depth is outside of the custom range.

⚠ Warning: If the range is set considerably less than the actual depth, the unit will not be able to find the bottom when zooming.

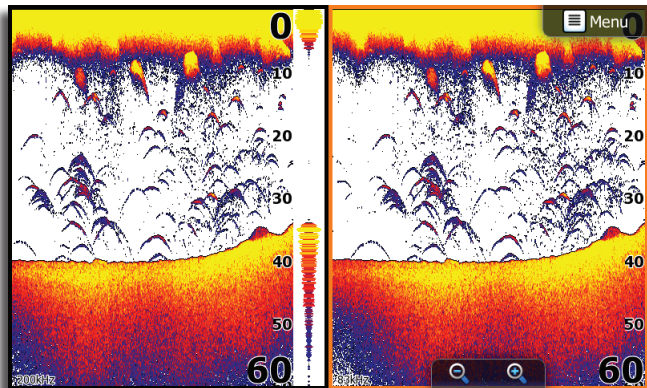
→ **Note:** Digital depth can be lost when using a custom depth range.

Frequency

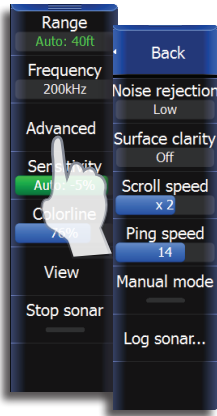
This unit supports 50kHz, 83kHz and 200kHz transducer frequencies, depending on the transducer installed.



Active cursor



You can view two frequencies at the same time by selecting the sonar + sonar quicksplit combo option.



Advanced

Noise rejection

Signal interference from bilge pumps, engine vibration and air bubbles can clutter the sonar screen.

The noise rejection option filters the signal interference and reduces on-screen clutter.

Surface clarity

Wave action, boat wakes and temperature inversion can cause onscreen clutter near the surface.

The surface clarity option reduces surface clutter by decreasing the sensitivity of the receiver near the surface.

Scroll speed

You can select the scrolling speed of the sonar image on the screen. A high scroll speed will update the image faster, while a low scroll speed will present a longer sonar history.

Ping speed

The Ping Speed controls the rate the transducer transmits into the water. A high ping speed will make the image move fast on the screen, while a low ping speed will present a longer history on the screen.

Manual mode

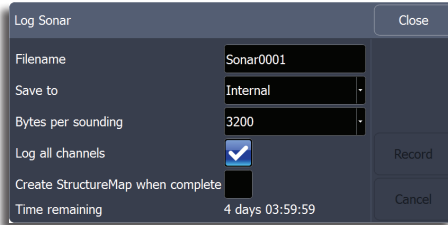
Advanced user mode that restricts digital depth capability, so the unit will only send sonar signals to the selected depth range. That allows the display to continue smooth scrolling if the bottom depth is out of transducer range. When the unit is in manual mode, you may not receive any depth readings, or you may receive incorrect depth information.

Log sonar data

You can record sonar data and save the file on to a SD card inserted into the unit's card reader. Log Sonar can be accessed from the Advanced sonar menu and the Sonar settings menu.

Bytes per sounding

Select how many bytes per seconds that are to be used when saving the log file. More bytes yield better resolution, but will cause the recorded file to increase in size compared to using lower byte settings.

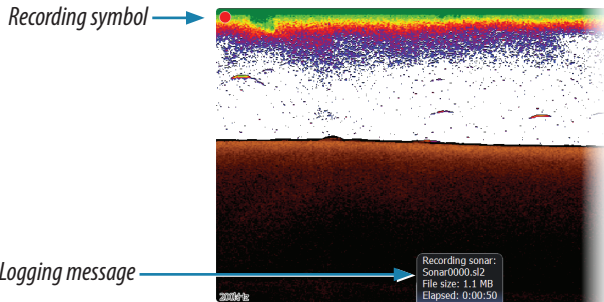


Log all channels

Logs Broadband and Structurescan sonar data simultaneously.

When logging all channels, logs are saved in .sl2 format instead of .slg format.

When the sonar image is being recorded, there will be a flashing red symbol and a message will appear periodically at the bottom of the screen. The sonar recording is stopped by re-selecting the Record function.



Viewing recorded sonar data

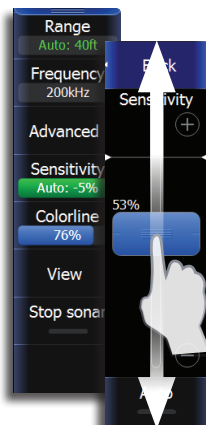
Stored sonar logs may be reviewed when selected. Sonar logs can be viewed by tapping **View sonar log** on the Sonar settings menu.

The log file is displayed as a paused image, and you control the scrolling and display from the replay menu.

You can use the cursor on the replay image, and pan the image by tapping and dragging on the screen as on a normal sonar image.

You exit the replay mode by tapping the **Close** button.

The function is activated from Sonar settings menu covered later in this section.



Sensitivity

Increasing Sensitivity will show more detail on the screen; decreasing Sensitivity displays less. Too much detail will clutter the screen. Conversely, desired echoes may not be displayed if Sensitivity is set too low.

→ **Note:** Auto Sensitivity is the preferred mode for most conditions.

Auto sensitivity

Auto sensitivity automatically adjusts the sonar return to the optimal levels. Auto sensitivity can be changed +/- to adjust for user preference while still maintaining the auto sensitivity functionality.

Colorline

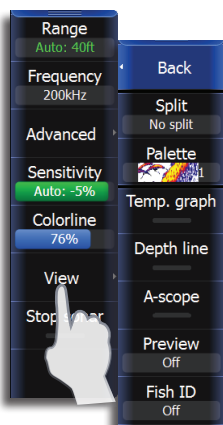
Allows the user to adjust the colors of the display to help differentiate softer targets from harder ones. Adjusting this can help separate fish and important structures on or near the bottom from the actual bottom.

Adjusting Sensitivity and Colorline

Sensitivity and Colorline are adjusted by dragging the slide bar vertically.

→ **Note:** Minor adjustments can be made by tapping above or below the slider bar.

The slide bar is accessed by tapping **Sensitivity** or **Colorline** on the Sonar menu.



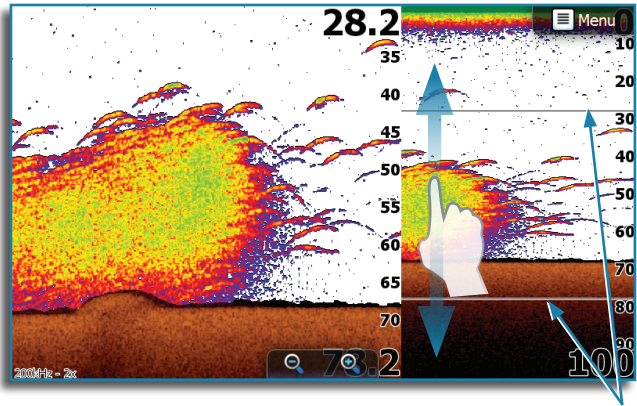
View

Split

Tap **View** on the Sonar menu and then tap **Split** to view split screen options.

Zoom

The Zoom mode shows a magnified view of the sonar image on the left side of the page.



Zoom bars

By default the zoom level is set to 2x. You can select up to an 8x zoom by pressing the dedicated zoom keys. The range zoom bars on the right side of the display shows the range that is magnified. If you increase the zooming factor the range will be reduced. You will see this as reduced distance between the zoom bars.

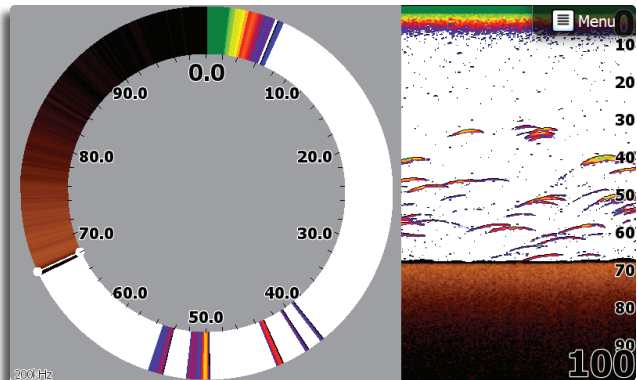
Bottom lock

The bottom lock mode is useful when you want to view echoes close to the bottom.

The scaling factor for the image on the left side of the panel is adjusted as described for the Zoom option.

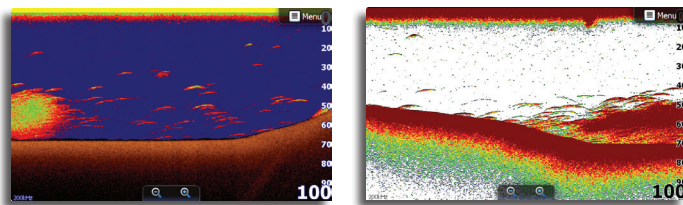
Flasher

The Flasher mode shows a flasher-style sonar in the left panel with a normal sonar view in the right panel.



Palettes

You can select from several display palettes optimized for a variety of fishing conditions.



Temp graph

Shows a red line and a digital display on the sonar screen to graphically illustrate changes in water temperature.

Depth line

Places a line on the bottom surface to make it easier to distinguish the bottom from fish and structure.

A-scope

Displays the amplitude of real-time echoes as they appear on the screen.

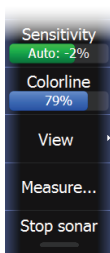
Preview

You can turn off sonar history preview, have it always shown at the top of the screen, or have it appear only when the cursor is active. By default, the sonar history preview appears when the cursor is active.

Fish ID

Shows sonar echoes as fish symbols instead of fish arches.

→ **Note:** In Fish ID mode, not all fish symbols shown on the display are actual fish.



Measuring distance

The cursor can be used to measure the distance between the two points on the sonar screen. It is easier to use the measure function when the sonar is paused.

→ **Note:** The Measure option will only be visible on the Sonar menu when the cursor is active.

Stop sonar

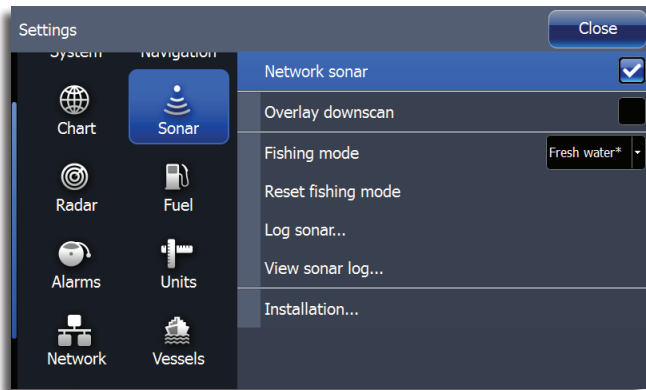
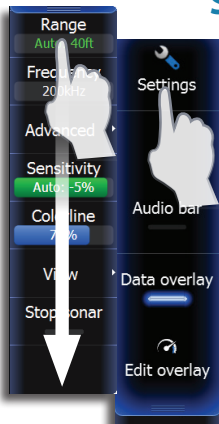
Allows you to closely examine sonar echoes, precisely position a waypoint or stop interference between transducers on your boat. When sonar is stopped, no sonar history will be recorded.

This function is also useful when using the cursor to measure a distance between two elements on the screen.

Pausing sonar

You can pause sonar by tapping the screen. When sonar is paused, sonar history will still be recorded.

Sonar settings



Network sonar

You can share the sonar images from this unit with other units connected to the network.

For more information about how to set up a sonar network, refer to the separate HDS Gen2 Touch Installation manual.

Sonar source

If you have more than one sonar on your Ethernet network, you can select which unit will be the sonar source for other units on the network.

1. Turn on Network sonar for each sonar unit on the network.
2. Clear the cursor from the sonar page
3. Tap the **Source** on the Sonar menu to toggle the sonar source between "this unit" and other units on the network.
4. Turn off Network sonar to stop sharing sonar.



Overlay Downscan™

You can overlay a Downscan image on a normal sonar image. Tap **Overlay downscan** on the Sonar settings menu.

When Overlay downscan is activated, the sonar menu will expand to include basic Structure options.

Tap Overlay on the Structure options menu to adjust the level of structure overlay shown on the screen. You will make adjustments using the Overlay slider bar.

Fishing modes

This feature consists of preset packages of sonar settings designed for specific fishing conditions. Access Sonar settings to select a fishing mode.

- **Note:** Selecting the proper fishing mode is critical to optimal sonar performance. If you completed Device configuration setup at initial startup, the proper fishing mode has already been selected.

Fishing Mode	Depth	Palette
General Use	≤ 1,000 ft	White background
Shallow Water	≤ 60 ft	White background
Fresh Water	≤ 400 ft	White background
Deep Water	≥ 5,000 ft	Deep Blue
Slow Trolling	≤ 400 ft	White background
Fast Trolling	≤ 400 ft	White background
Clear Water	≤ 400 ft	White background
Ice Fishing	≤ 400 ft	Ice fishing

Reset fishing mode

Resets selected fishing mode to default settings, allowing you to clear settings adjustments made while using a fishing mode.

Installation settings



Keel offset

This is a value that can be entered on the sonar Installation page to make depth readings relate to any point from the water surface, to the deepest point of the vessel.

Below are some typical ways in which the offset is used:

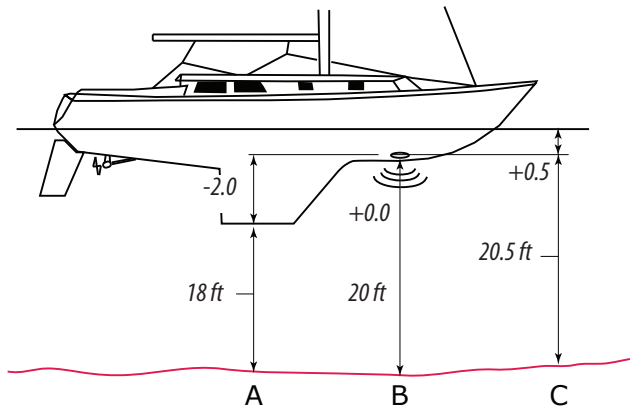
A) For Depth below Keel: Set the distance from transducer to the keel.

Enter a negative value, e.g.

B) For Depth Below Transducer: no offset required.

C) For Depth Below Surface (waterline): Set the distance from transducer to the surface:

Enter a positive value, e.g.



Water speed calibration

Water speed calibration is used to adjust the speed value from the paddle wheel to match the actual boat speed through the water. Actual speed can be determined from GPS speed over ground (SOG) or by timing the boat over a known distance. Water speed calibration should be performed in calm conditions, with minimal wind and current movement.

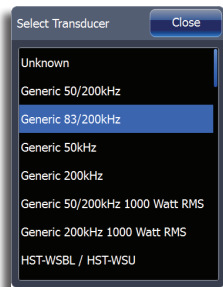
Water speed averaging

Averages water speed by measuring your speed at a selected interval of time. Water speed intervals range from one to thirty seconds, e.g. If you select five seconds, your displayed water speed will be based on averaging over 5 seconds of sampling.

Water temperature calibration

Temperature calibration is used to adjust the water temperature value from the sonar transducer to match the data from another temperature sensor. It may be required to correct for localized influences to the measured temperature.

→ **Note:** Water temperature calibration only appears if the transducer is temperature capable. Check transducer type selection if this option should be available.



Transducer type

Transducer type is used for selecting the transducer model that came with your unit. In some transducers with built-in temperature sensors, the temperature reading may be inaccurate if the wrong transducer is selected from the transducer type menu.

8

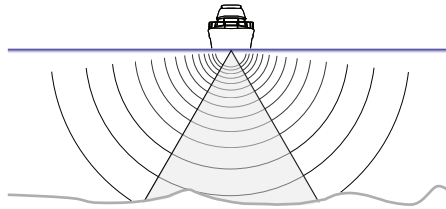
StructureScan HD™

StructureScan HD™ uses high frequencies to provide a high resolution, picture-like image of the bottom.

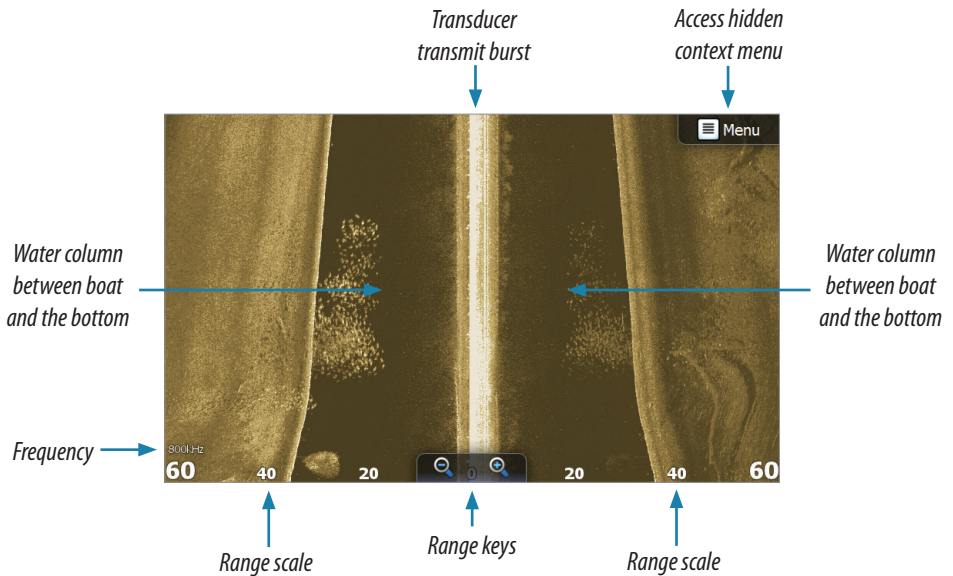
→ **Note:** You must have a StructureScan HD transducer installed to use StructureScan features.

StructureScan HD provides a 328 m (600 ft) wide coverage in high detail with SideScan, while DownScan™ provides detailed images of structure and fish directly below your boat, down to 92 m (300 ft).

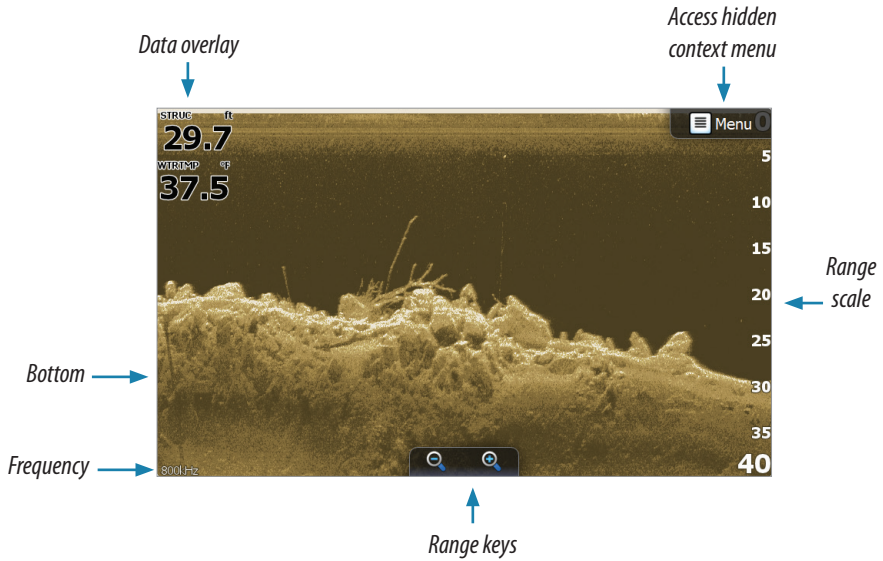
The StructureScan page is accessed from the shortcut icon on the homescreen when the StructureScan transducer is connected.



SideScan

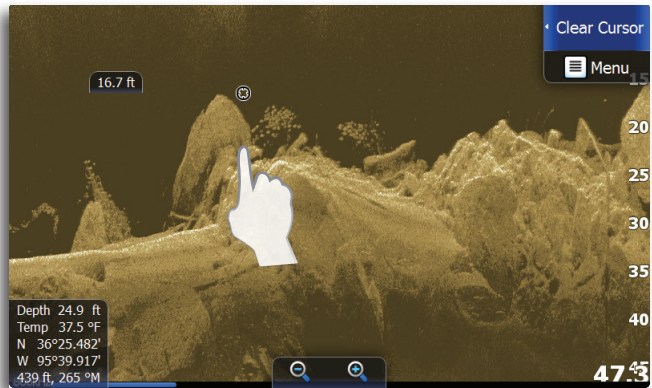


DownScan



Using the cursor on the StructureScan page

The cursor is by default not shown on the StructureScan page. When you tap the screen the cursor will appear. The left/right distance from the vessel to the cursor are shown at the cursor position, and the information window and the history bar will be activated.



Press and hold the screen to activate cursor assist mode.

To remove the cursor and cursor elements from the panel, press **Clear cursor** on the StructureScan menu.

Goto cursor

You can navigate to the cursor by tapping **Goto cursor** on the menu.

Saving a waypoint

You can save a waypoint at the cursor position by tapping the screen and then tapping New waypoint on the StructureScan menu. Tap **Save** on the waypoint dialog to create the waypoint.

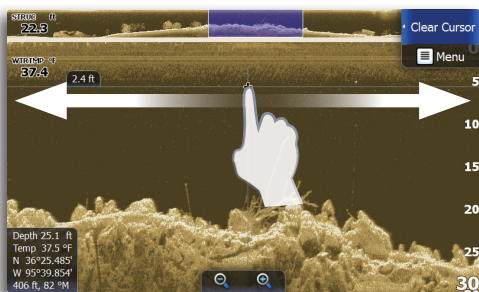
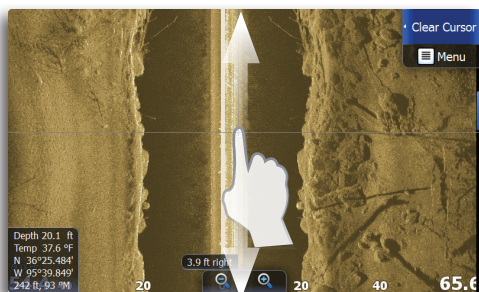
With the cursor inactive, press the dedicated **WAYPOINT** key to save a waypoint at the vessel position.

Zooming

Use the dedicated **ZOOM** keys to zoom in and out on part of the water column. When the cursor is active, the screen will be zoomed at the cursor location.

Viewing StructureScan history

Whenever the cursor is active, the history preview will appear at the top of the screen on a Downscan image. A blue scroll bar will appear on the right side of the screen on a SideScan image.



The blue scroll bar shows the image you are currently viewing in relation to the total sonar history stored. You can pan the image history by dragging up/down (SideScan) or left/right (DownScan). To resume normal StructureScan scrolling, tap **Clear cursor**.

Preview

You can have all available downscan history shown at the top of the structure page. The Preview bar is a snapshot of available sonar history. You can scroll through sonar history by dragging the preview slider horizontally. Preview settings are accessed from the Advanced menu.



No cursor

StructureScan™ menu

When the cursor is active, some features on the StructureScan menu will be replaced with cursor mode features.

Tap **Clear cursor** to return to the normal StructureScan menu.

Range

DownScan range controls the water depth that is visible on the screen.

SideScan range controls how much of the side view will be visible on the screen.

Tap the range keys on the touchscreen to adjust the range on both DownScan and SideScan images.

Auto range

When the range is set to Auto the system will automatically set the range depending on the water depth.

Preset range levels

You can select between several preset range levels.

When manually changing the range the upper depth line will always be at the water surface. This options allows you to focus on echoes at the upper part of the water column.

Frequency

StructureScan supports two frequencies. 455 kHz has excellent resolution and greater range, while 800 kHz provides better definition at shallower depths.

Advanced

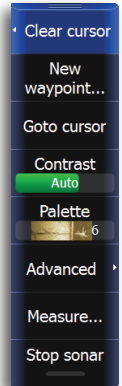
Surface clarity

Wave action, boat wakes and temperature inversion can cause on-screen clutter near the surface.

The clarity option reduces surface clutter by decreasing the sensitivity of the receiver near the surface.

Noise rejection

Signal interference from bilge pumps, engine vibration and air bubbles can clutter the StructureScan image. The noise rejection option filters the signal interference and reduces on-screen clutter.



Active cursor



Flipping Left/Right image

If required, the left/right Sidescanning images can be flipped to match the corresponding side of your vessel.

Range lines

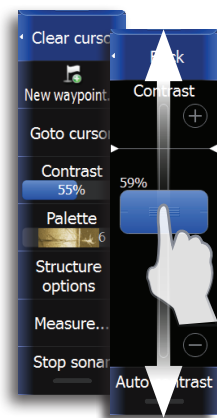
Range lines extend from the range scale to the other side of the screen, making it easier to estimate depth (DownScan) and distance (SideScan).

Preview

You can turn off the downscan history preview, have it always shown at the top of the screen, or have it appear only when the cursor is active. By default, the downscan history preview appears when the cursor is active.

Log sonar

You can record sonar data and save the file on to a SD card inserted into the unit's card reader. For more information on recording and viewing structure data, refer to "Log sonar data" on page "Log sonar data" on page 45.



Contrast

Adjusts the brightness ratio between light and dark areas of the screen, making it easier to distinguish objects from the background.

→ **Note:** Fine adjustments can be made by tapping above or below the indicator.

Palette

You can select from several display palettes optimized for a variety of fishing conditions.

View

The StructureScan page can be set up as a DownScan image, left only, right only or left/right side scanning.

The DownScan image can also be added as an overlay to the traditional sonar image. For more information, refer to "Overlay Downscan™" on page 51 .

Measuring distance

The cursor can be used to measure the distance between two points on the StructureScan image. It is easier to use the measure function when the structure image is paused.

- **Note:** The Measure option will only be visible on the Structure menu when the cursor is active.

Stop sonar

Allows you to closely examine structure, precisely position a waypoint or stop interference between transducers on your boat. When sonar is stopped, no sonar history will be recorded.

This function is also useful when using the cursor to measure a distance between two elements on the screen.

Pausing sonar

You can pause sonar by tapping the screen. When sonar is paused, sonar history will still be recorded.

Network StructureScan

If you have more than one StructureScan system on your network, you can select which unit will be the preferred data source.

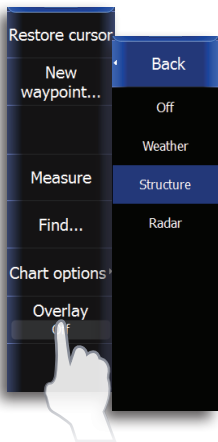
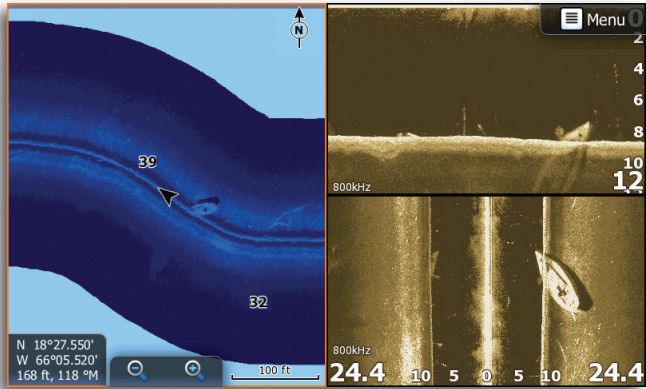
Structure settings

StructureScan and sonar use the same settings menu. For more information refer to “Sonar settings” on page 50 .

9

StructureMap™

StructureMap™ is a tool that allows you to overlay SideScan sonar returns on top of the chart, giving you a birds-eye view of underwater structure below and beside your boat. StructureMap makes it easier for you to visualize the underwater environment in relation to your position and aids the user in interpreting SideScan sonar images.

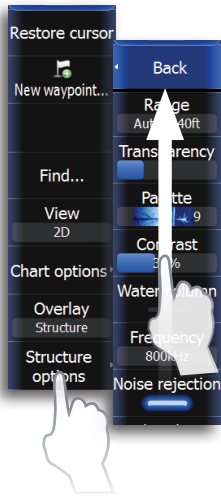


Turning on StructureMap overlay

You can view StructureMap data by turning on Structure overlay from the Chart menu.

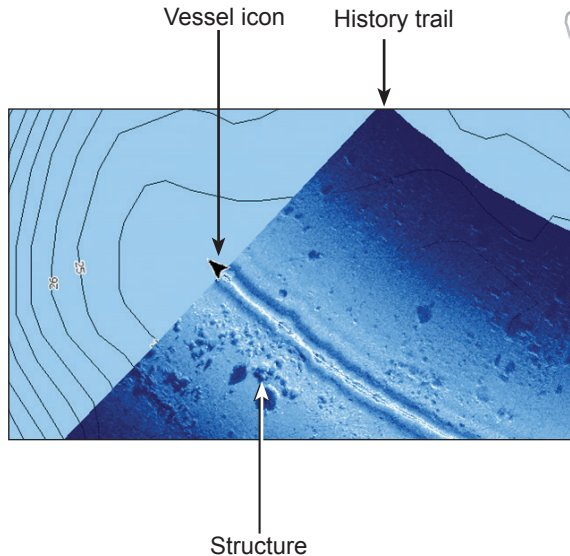
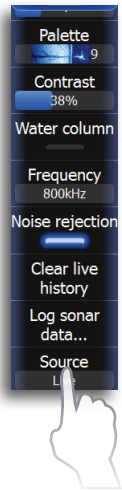
Selecting Structure Source

StructureMap can be used in Live mode or Saved mode. Live mode allows you to view real-time StructureMap data on the screen. Saved mode is used to display StructureMap data previously saved to a SD card.



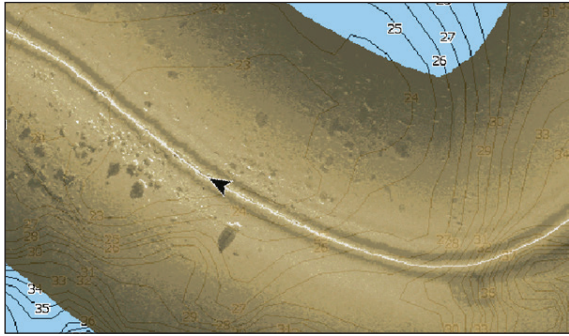
Live mode

Displays the last few minutes of the Side Imaging history as a trail behind the vessel icon. The length of this trail will vary depending on the Side Imaging and Down Imaging range settings. The higher the range settings the longer the history length that will show up behind the vessel icon. Typically, it will display the last 4-5 minutes of recording. Live mode allows the user to quickly identify interesting areas of the lake and how they relate to vessel position. It also allows the user to scroll back and zoom in on a recently scanned areas of the lake to look at additional details of what was scanned. Live mode does not save any data. If the unit is turned off, all recent sonar history is lost.



Saved mode

Displays StructureMap (.smf) files that have been created from structure sonar log (.sl2) files. Saved mode is used to view a map of the underwater environment that can be reviewed and examined either on or off of the water. It can be used when revisiting an area that has already been scanned in order to assist the user in positioning the vessel or locating specific points of interest.



→ **NOTE:** If there is more than one StructureMap of the same area on the same SD card, the maps will overlap on your screen. If you want to have more than one map of the same area, you should put the maps on separate SD cards.

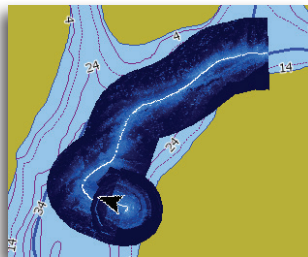
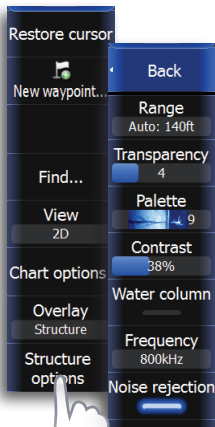
Structure options

Range

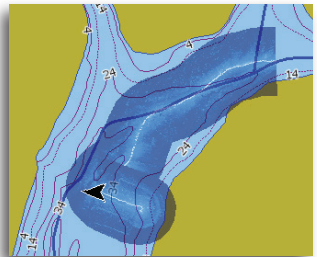
Controls the width of the SideScan history trail. Adjust the range properly for the depth of the water. The greater the range setting, the wider the StructureMap history trail; Lower range settings reduce the width of the history trail.

Transparency

Increases/decreases the visibility of Structure overlay so underlying chart detail may be revealed/obscured. This is helpful when using marine mapping cards.



Minimum transparency



Maximum transparency

Palette

Several display palettes with varying degrees of color and brightness are available.

Contrast

Adjusts the brightness ratio between light and dark areas of the screen, making it easier to distinguish objects from the background.

Water column

Turns on/off the viewing of the StructureScan water column on StructureMap (only applicable in Live mode).

Frequency

StructureScan supports two frequencies. 455 kHz has excellent resolution and greater range, while 800 kHz provides better definition at shallower depths.

Noise Rejection

Monitors the effects noise (boat pumps, water conditions, engine ignition systems, etc.) has on your display, and then filters out undesired signals.

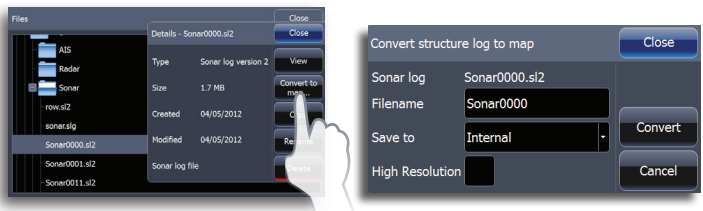
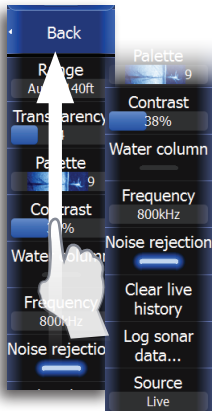
Logging Structure data

To record structure data, steer your boat over an area and select **Log Sonar** from the Structure options menu.

→ **NOTE:** For best results, we recommend turning off Auto Range when recording a structure sonar log (.sl2).

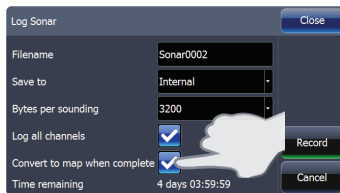
Converting files

To create a StructureMap file you must convert a structure sonar log (.sl2) file to StructureMap format (.smf). This can be done automatically from the Sonar Log menu, or manually by converting logs from the Files menu. Due to the large size of StructureMap



(.smf) files, we recommend using an SD card when recording StructureMaps.

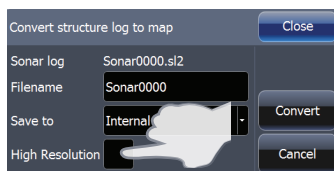
To have structure sonar log (.sl2) files automatically converted to StructureMap file format (.smf), tap **Convert to map when complete** on the Sonar Log menu. The (.sl2) file will be converted to a (.smf) file when recording is stopped. You can convert logs after recording from the File utility. Refer to the Utilities section of this manual for more information.



→ **NOTE:** Keep the size of your sonar logs to 100MB or less to allow for faster file conversion. Current file size is occasionally flashed on the screen during the recording process. You will not be able to use any of the unit's other functions while a file is being converted.

Converting files in high resolution

You can create standard resolution or high resolution StructureMap .smf files. High resolution .smf files capture more detail, but take longer to convert and are larger than standard resolution .smf files.



Check the High Resolution checkbox to convert files in high detail.

Accessing StructureMap files on SD card

All StructureMap files on your SD card will automatically appear on the screen when Saved mode is selected.

Using StructureMaps with mapping cards

StructureMap allows you to maintain full chart capability and can be used with embedded cartography as well as Navionics, Insight and other third-party charting cards compatible with HDS units.

Sharing files

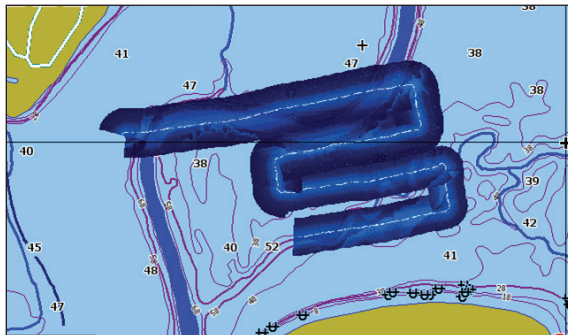
After structure sonar log (.sl2) files are converted to StructureMap (.smf) files, they can be saved to a SD card and used on other GPS capable HDS Gen 2 units without the need for the StructureScan module.

Show StructureMap (.smf) files

You can view StructureMap (.smf) files from the Files menu, which allows you to quickly see what area each StructureMap file covers.

Scanning Fishing areas

With the Structure Source set to the default Live mode, steer the boat over the desired location to scan the area. When conducting a side-by-side scan of an area, you will get a cleaner scan if you do not overlap history trails and you turn off auto ranging on the SideScan.



→ **NOTE:** Optimal speed for viewing or logging StructureMap data is between 2-8 mph (3-12 kmh). Live mode is disabled for speeds greater than 10 mph.

Scanning tips

- To get a picture of taller structure (a wreck, etc) — don't drive over it. Steer the boat so the structure will be on the left or right side of your boat.
- Set your structure range to a significantly greater level (two-to-three times) than the water depth to ensure a complete scan and to maximize conversion accuracy.

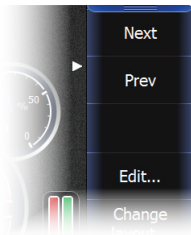
10

The Instruments panels

The Info page instrument panel consists of multiple gauges that can be customized to display selected data. The instrument panel displays data on dashboards, and you can define up to ten dashboards within the instrument panel.

Tap the info page icon on the homescreen to display the info page instrument panel.

→ **Note:** To include fuel/engine information, engine and tank information has to be set using the Fuel utility. Refer to the Fuel section in this manual.



The dashboards

Three dashboard layouts are predefined to display gauges.

You can switch dashboards by tapping the left and right arrows in the upper left and upper right corners of the screen.

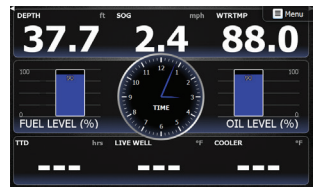
Dashboards also can be switched by tapping **Next** or **Prev** on the menu.



Vessel dashboard



Navigation dashboard



Angler dashboard

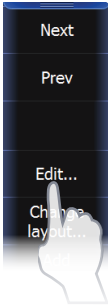
Customizing the Instrument panel

You can customize the Instrument panel by changing the data for each of the gauges in the dashboard, by changing the dashboard layout, and by adding new dashboards. You can also set limits of analog gauges.

All edit options are available from the Instrument panel menu.

Available editing options will depend on the data sources that are connected to your system.

Edit an Instrument dashboard



1. Select the dashboard you want to edit.
2. Tap **Edit** on the Instrument page menu
3. Tap the gauge you want to change. The selected gauge will be shaded in blue
4. Tap **Select info**
5. Tap a data category
6. Tap a data type
7. Tap **Save** on the menu



11

Using Video (9" and 12" units only)

The video function allows you to view videos or camera sources on your unit's screen.

For information about how to connect the camera, see the separate Installation manual.

Tap the Video icon on the homescreen to access the Video page.

→ **Note:** The video images will not be shared via the network. You can only view the video on the unit connected to the video source.

The video page

The video image will be proportionally scaled to fit onto the video screen. Area not covered by the image will be colored black.



Setting up the video page

Adjusting the video image

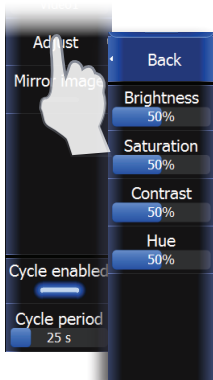
You can optimize the video display by adjusting the video image settings. Default for all settings: 50%.

Mirroring the video image

Video input can be set to display a mirrored image. This setting can be helpful for rear-facing cameras used to back-down the vessel.

The video standard

This unit supports NTSC and PAL video. Check the local video standard or the standard of your cameras.



12

The Alarm system

This unit will continuously check for dangerous situations and system faults while the system is running. When an alarm situation occurs, an alarm message will pop up on the screen.

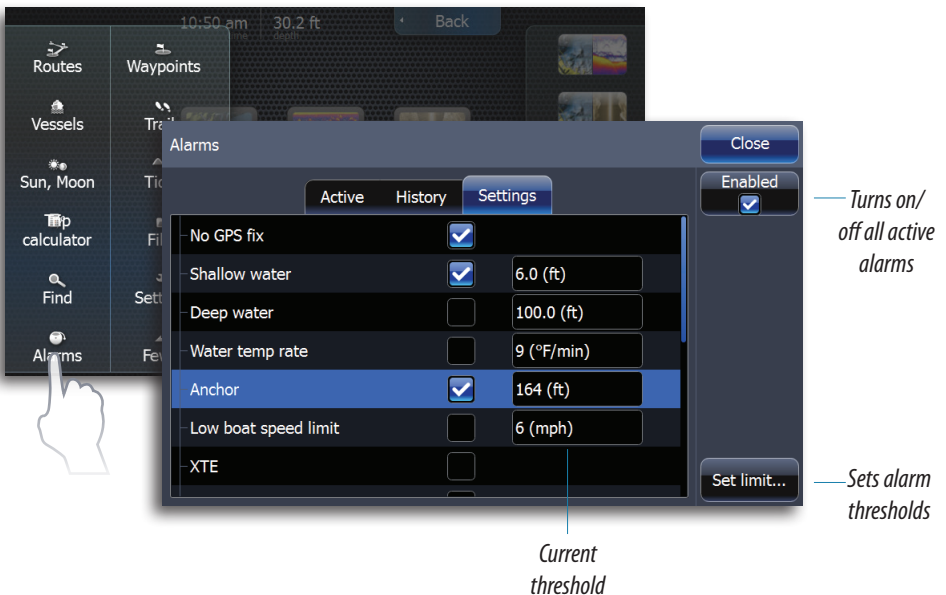
If you have enabled the siren, the alarm message will be followed by an audible alarm.

The alarm is recorded in the alarm history so you can see the details and take the appropriate corrective action.

The alarms dialog

The alarms can be setup in the Alarms dialog. This dialog also includes information about active alarms and alarm history.

The alarms dialog is accessed from the Utilities tab on the home-screen. Tap an alarm checkbox to activate the alarm.



Set limits

Sets thresholds for alarms that when exceeded will trigger the alarm. Thresholds are not used on all alarms. If an alarm supports thresholds, the Set Limit button will be active when the alarm is selected.

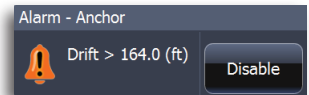
Type of messages

The messages are classified according to how the reported situation will affect your vessel. The following color codes are used:

Color	Importance
Red	Critical
Orange	Important
Yellow	Standard
Blue	Warning
Green	Light warning

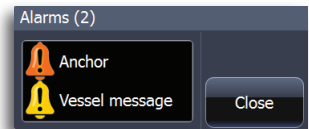
Single alarms

A single alarm is displayed with the name of the alarm as the title, and with details for the alarm.



Multiple alarms

If more than one alarm is activated simultaneously, the alarm message will display a list of up to 3 alarms. The alarms are listed in the order they occur with the alarm activated first at the top. The remaining alarms are available in the Alarms dialog.



Acknowledging an alarm

The following options are available in the alarm dialog for acknowledging a message:

Option	Result
Close	Sets the alarm state to acknowledged, meaning that you are aware of the alarm condition. The siren will stop and the alarm dialog will be removed. The alarm will however remain active in the alarm listing until the reason for the alarm has been removed.
Disable	Disables the current alarm setting. The alarm will not show again unless you turn it back on in the Alarms dialog.

There is no time-out on the alarm message or siren. These remain until you acknowledge it or until the reason for the alarm is removed.

13

Utilities

The Utilities tab includes options and tools that are not specific to any page. Utilities are accessed from the homescreen.



Tapping a utility will open a dialog giving you access to available options for the selected item. When you select a utility, a dialog will open on top of your previous page. When you close one of these dialogs the display will return to last active page.

Vessels

Status listing

List of all AIS, MARPA, and DSC vessels with available information.

A screenshot of the Vessels status listing dialog. The dialog has a title bar 'Vessels' and a 'Close' button. Below the title bar are two tabs: 'Status - All' (selected) and 'Messages'. To the right of the tabs is a 'Sort' button with a dropdown arrow. The main area contains a table with the following data:

Name	Distance	Bearing	CPA	TCPA	Type	Status
SIM VESSEL A	1196 mi	120 °M	-	-	AIS	safe
SIM VESSEL B	1196 mi	120 °M	-	-	AIS	safe
SIM VESSEL C	1195 mi	120 °M	-	-	AIS	safe
SIM VESSEL D	1196 mi	120 °M	-	-	AIS	safe
SIM VESSEL E	1196 mi	120 °M	-	-	AIS	safe

At the bottom right of the dialog is a 'View' button with a dropdown arrow.

Message listing

List of all messages received from other AIS vessels with time stamp.

Sun/moon

Displays sunrise, sunset, moonrise and moonset for a position based on entered date and the position's latitude/longitude.

Trip Calculator

Trip 1/Trip 2

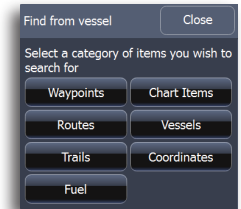
Displays voyage and engine information, with reset option for all data fields.

Today

Displays voyage information for the current date. All data fields will be automatically reset when the date changes.

Find

Search function for chart components.



Alarms

Active alarms

List of active alarms.

Alarm history

List of all alarms with time stamp.

Alarm settings

List of all available alarm options in the system, with current settings.

Waypoints/routes/trails

List of waypoints, routes and tracks with details.

Tap on the waypoint, route or track you wish to edit or delete.

Tides

Displays tide information for the tide station nearest to your vessel. Tap the arrow panel buttons to change date, or tap the date field to access the calendar function.

Available tide stations can be selected from the menu.

Satellites

Status page for active satellites.

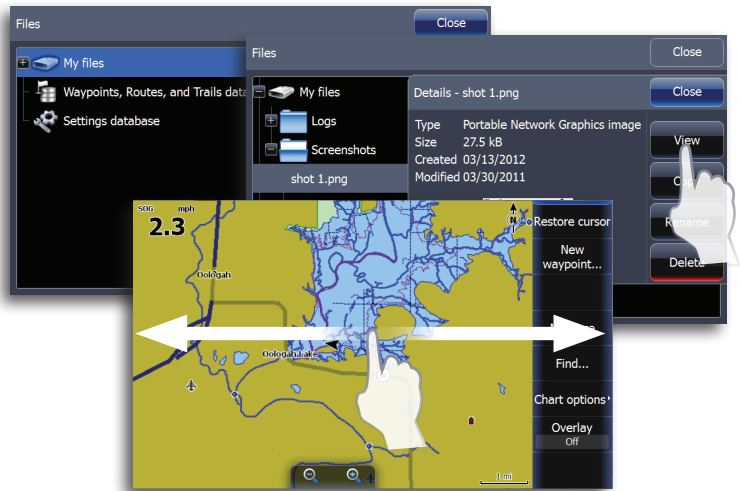
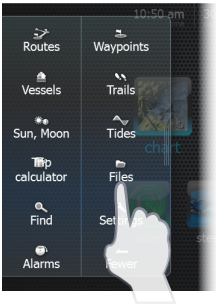
WAAS (and EGNOS) differential position correction can be configured to On or OFF.

Files

File management system for logs, screenshots, waypoints, routes, tracks and settings.

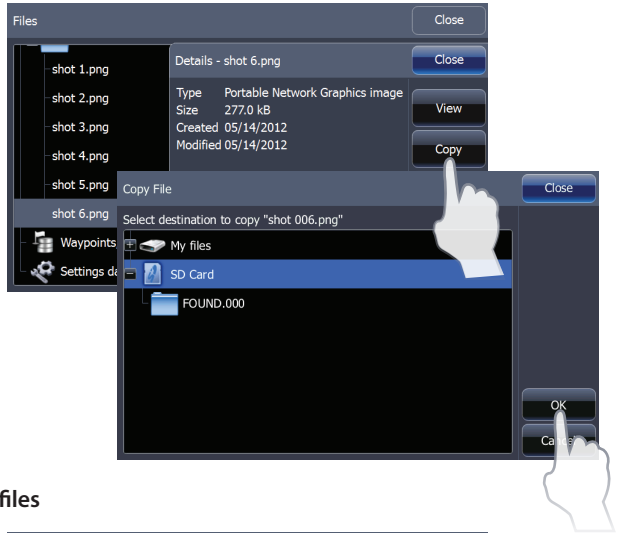
Viewing screenshots

When viewing a screenshot full screen, you can drag your finger across the screen to view other screenshots. Press Zoom In to return to the file list.

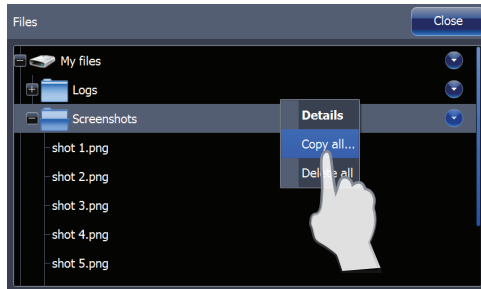


Copying files to SD card

You can copy screenshots and logs to a SD card. You can also export system settings and waypoints, routes and trails to a SD card. Exporting files is covered in the Maintenance section.

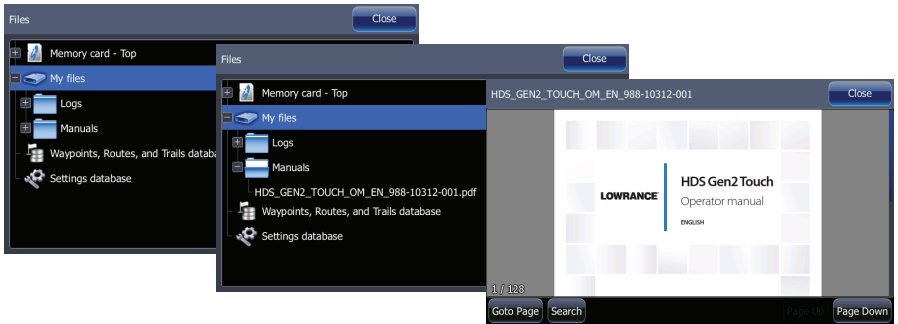


Copying all files



PDF reader

Use the PDF viewer to read manuals and other PDF files on the HDS display. The manuals can be read from an inserted SD card or from the unit's internal memory.



Settings

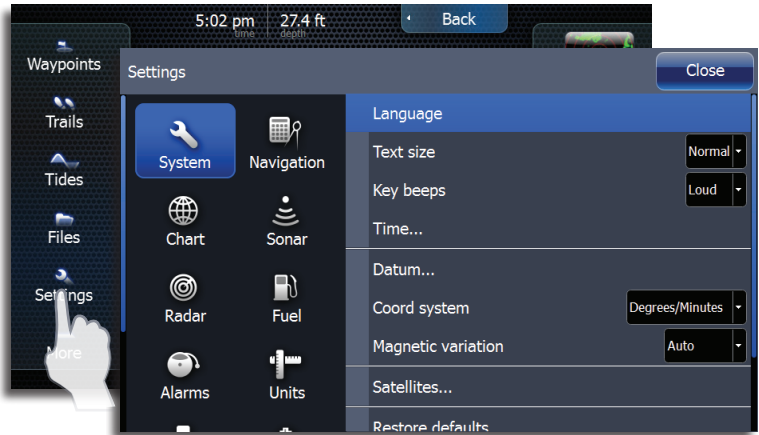
Opens the system settings menu.

14

System Settings

Changing system settings

The system settings provides access to advanced settings for your system and determines the way your system displays various user interface information on the display.



Language

Controls the language used on this unit for pages, menus and dialogs. Changing the language will make the unit restart.

Text size

Used for setting the text size on menus and dialogs.

Default setting: Normal

Key beeps

Controls the loudness of the beep sound when a key is pressed.

Default settings: Loud.

Time

Controls the local time zone offset, and the format of the time and date.

Datum

Most paper charts are made in the WGS84 format, which also is used by your unit. If your paper charts are in a different format, you can change the datum settings accordingly to match your paper charts.

Coordinate system

Defines the coordinate system used when position coordinates are entered and displayed.

Magnetic variation

Magnetic variation is the difference between true bearings and magnetic bearings, caused by different location of the Geographic and the Magnetic north poles. Any local anomalies such as iron deposits might also affect the magnetic bearings.

When set to Auto, the system automatically converts magnetic north to true north. Select manual mode if you need to enter your own local magnetic variation.

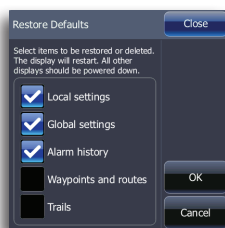
Satellites

Illustrates the location of satellites in view and the quality of the unit's satellite lock.

Restore defaults

Allows you to select which settings are to be restored to their original factory settings.

1. Tap **Restore defaults**
2. Select items to be restored to factory defaults.
3. Tap **OK**



⚠ Warning: If waypoints, routes and trails are selected, they will be permanently deleted.

Advanced

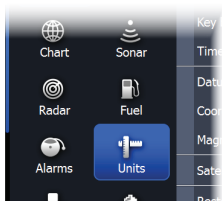
Shows a dialog with more advanced settings.

About

Displays unit software information.

Units

Controls unit of measure used for various data types. Units are accessed from the Settings panel.



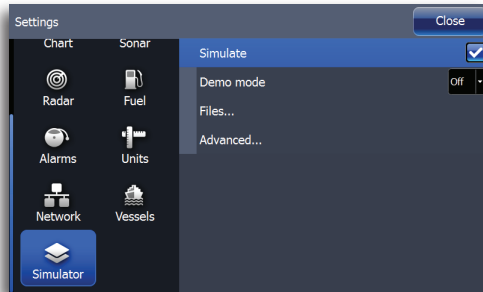
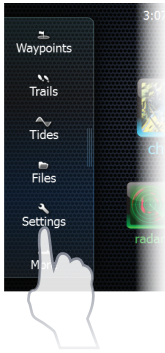
15

Using the simulator

Simulator mode

The simulation feature will let you see how the unit works in a stationary position and without being connected to the sonar, GPS, radar, etc.

You can use the simulator to help you become familiar with your unit before using it out on the water.



When the simulator is toggled on this is indicated in the lower part of the display.

Demo mode

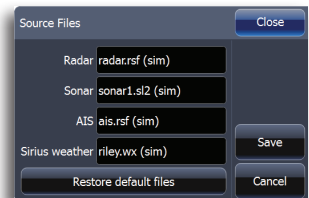
In this mode the unit automatically runs through the main features of the product.

If you press a key when demo mode is running, the demonstration will pause. After a time-out period, demo mode will resume.

Selecting simulator source files

You can select which data files to be used by the simulator.

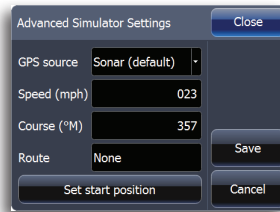
A set of source files is included in your system, and you can import files by using an SD card inserted into the unit's card reader.



You can also use your own recorded sonar files in the simulator.

Advanced simulator settings

The advanced simulator settings allow you to define how to run the simulator. When the settings are saved these will be used as default when starting the simulator mode.



GPS source

Selects the source where simulated GPS data is generated.

Speed, Course and Route

Used to enter values when GPS source is set to Simulated course or Simulated route. Otherwise, GPS data including speed and course comes from the selected echosounder or radar files.

Set start position

Moves the simulated vessel position to the cursor position.

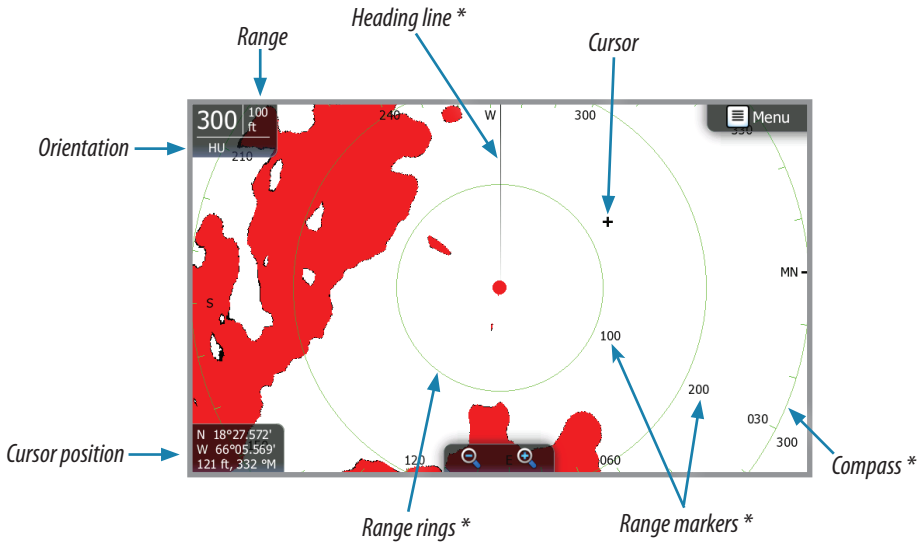
16

Using the radar (optional)

The radar page can be set up as a full screen view or combined with other pages.

The radar image can also be displayed as an overlay to existing 2D chart views and 3D for Navionics. Refer to “Chart overlay” on page 26.

→ **Note:** Radar overlay requires data from heading sensor.



* Optional radar symbology.

Radar operation modes

The radar’s operational modes are controlled from your unit. The following modes are available:

Off

The power to the radar scanner is turned off

Standby

The power to the radar scanner is on, but the radar is not transmitting.

Transmit

The scanner is on and transmitting. Detected targets will be drawn on the radar PPI (Plan Position Indicator).

Adjusting range

You can use the zoom keys on the touchscreen or the dedicated zoom keys on the front of the unit to adjust the radar range.

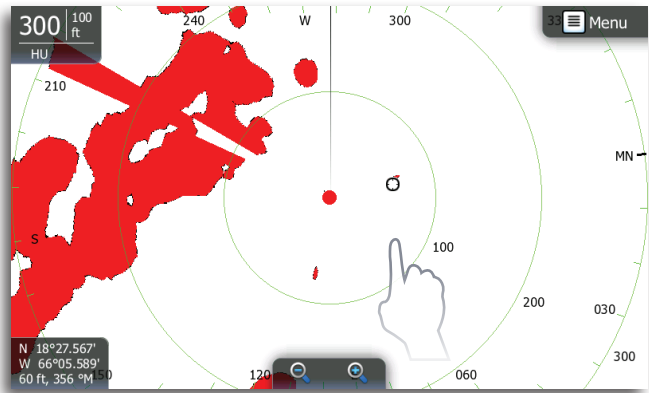
Using the cursor on the radar page

The cursor is by default not shown on the radar image.

When you tap the radar page the cursor and the cursor position window will be activated.

The cursor can be used to measure a distance to a target, and to select targets as described later in this section.

To remove the cursor and cursor elements from the panel, tap **Clear cursor** on the radar menu.



Press and hold to activate cursor assist mode.

Goto cursor

You can navigate to the cursor by tapping Goto cursor on the menu.

Saving a waypoint

You can save a waypoint at the cursor position by tapping the screen and then tapping New waypoint on the radar menu. Tap Save on the waypoint dialog to create the waypoint.

Press the dedicated waypoint key to save a waypoint at the vessel position.

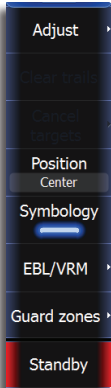
→ **Note:** A heading sensor must be connected to the system to save a waypoint on the radar PPI.

Measuring range and bearing to a target

Range rings

The range rings are displayed at preset distances from the vessel based on the radar range.

You can use the range ring to estimate the distance to a radar echo.



No cursor

Radar menu

When the cursor is active, some features on the radar menu will be replaced with cursor mode features.

Tap **Clear cursor** to return to the normal radar menu.



Active cursor

Adjust

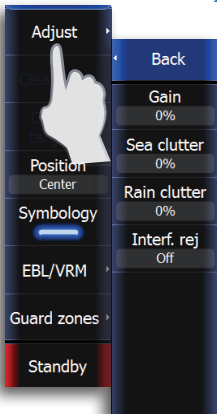
Gain

The gain controls the sensitivity of the radar receiver.

A higher gain makes the radar more sensitive to radar returns, allowing it to display weaker targets. If the gain is set too high, the image might be cluttered with background noise.

Gain has a manual and an automatic mode. You can only adjust the gain value in manual mode by vertically dragging the gain slide bar.

→ **Note:** Auto mode will work best in most conditions



Sea clutter

Sea clutter is used to filter the effect of random echo returns from waves or rough water near the vessel. When you increase Sea Clutter filtering the on-screen clutter caused by the echoes of waves will be reduced.

Sea clutter has a manual mode and two automatic modes (harbor, offshore). Select manual mode to make adjustments to Sea clutter.

Automatic modes use a combination of Gain/Sea Clutter settings best suited for the selected mode (Harbor, Offshore).

Rain Clutter

Rain clutter is used to reduce the effect of rain, snow or other weather conditions on the radar image.

Adjust the value by vertically dragging the rain clutter slide bar.

The value should not be increased too much as this may filter out real targets.

Interference rejection

Interference could be caused by radar signals from other radar units operating in the same frequency band.

A high setting will reduce the interference from other radars. The medium setting offers the best overall performance. When there is no interference, the low setting prevents you from missing weaker targets.

In order to not miss weak targets, the interference rejection should be set low when no interference exists.

Position

You can shift the radar PPI center to different positions on the radar page to see further in any direction.

The radar position can only be changed when the radar is transmitting.

Center

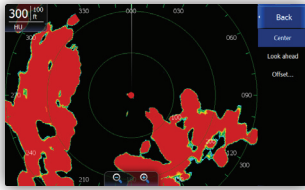
Default setting. The radar PPI center is centered on the radar panel.

Look Ahead

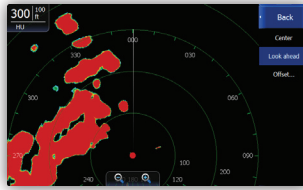
Moves the radar PPI center to the bottom of the panel to give maximum view ahead.

Offset

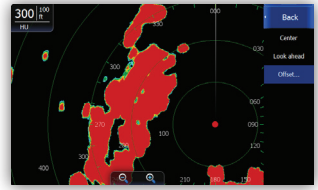
Allows you to move the PPI center to any location on the radar page.



Center



Look ahead

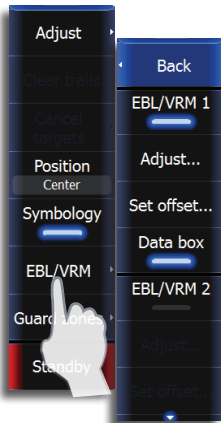


Custom offset

1. Select the offset option from the menu
2. Tap the screen where you want to position the radar center
3. Confirm the setting by tapping **Save offset** on the menu.

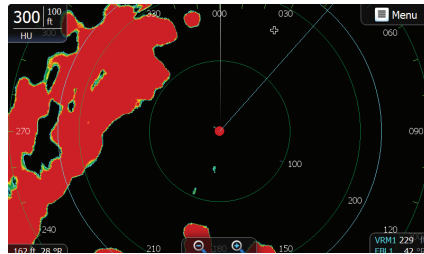
Symbology

Radar symbology can be turned ON/OFF collectively from the Radar menu, or individually as described in Radar settings later in this section..



EBL/VRM

The electronic bearing line (EBL) and variable range marker (VRM) allows quick measurements of range and bearing to vessels and landmasses within radar range. Two different EBL/VRMs can be placed on the radar image.



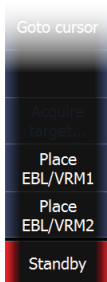
The EBL/VRM is by default positioned from the center of the vessel. It is however possible to offset the reference point to any selected position on the radar image.

You can position EBL/VRM by using the cursor, and edit the marker position as described below.

When positioned, you can quickly turn the EBL/VRM on/off by tapping the desired EBL/VRM on the menu.

Defining an EBL/VRM marker

1. Ensure that the cursor is not active on the radar page
2. Tap EBL/VRM on the radar menu
3. Select an EBL/VRM.
4. Tap adjust to select EBL/VRM position
5. Drag the EBL/VRM into the desired location
6. Tap Save EBL/VRM



Quick EBL/VRM marker positioning by using the cursor

1. Tap the radar page to position the cursor
2. Tap Place EBL/VRM1 or EBL/VRM2
 - The EBL line and the VRM circle will be positioned according to the cursor position
3. Tap the EBL/VRM menu button again to reposition the EBL/VRM.

EBL/VRM settings

Adjust

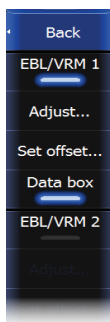
Tap **Adjust** and drag your finger in any direction on the screen to resize the VRM and change the location of the EBL.

Set offset

Used to change the PPI center of the EBL/VRM. Tap **Set offset** and tap the desired location on the screen.

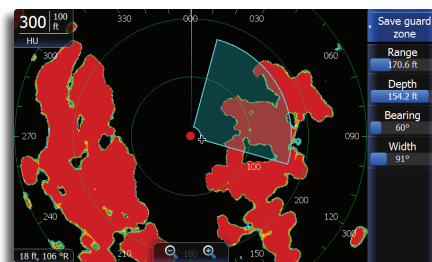
Data box

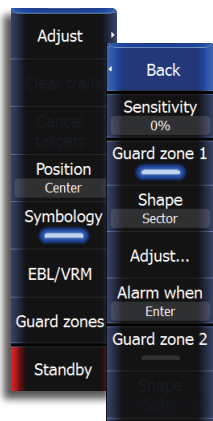
Turns on/off onscreen EBL/VRM information box.



Setting a guard zone around your vessel

A guard zone is an area (either circular or a sector) that you can define on the radar image. When activated, an alarm will alert you when a radar target enters or exits the zone.





Defining a guard zone

1. Tap Guard Zone on the radar menu
2. Tap one of the guard zones
3. Tap **Adjust** and tap and drag on the screen to position the guard zone
4. Save the position by tapping Save guard zone on the menu.



Sensitivity

The guard zone sensitivity can be adjusted to eliminate alarms for small targets.

Shape

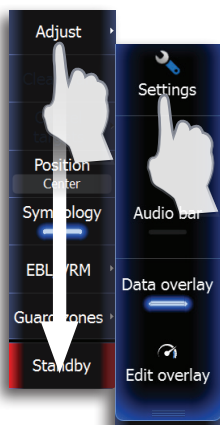
You can choose whether the guard zone has a circular or sector shape.

Adjust

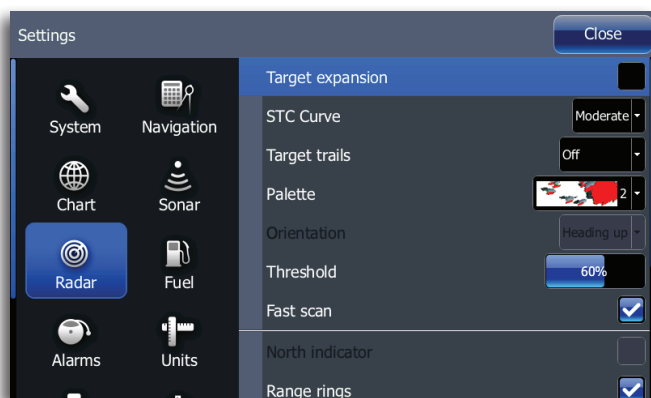
Used to position the guard zone. Range, depth, bearing and width values are adjusted as you tap and drag on the screen.

Alarm when

An alarm will be activated when a radar target breaches the guard zone limits. You can select if the alarm will be activated when the target enters or exits the zone.



Radar Settings menu



Target expansion

Increases signal processing to provide larger target returns for better visibility on the screen.

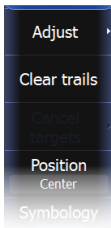
STC curve

The STC (Sensitivity Time Control) controls the sensitivity of the radar signal close to your vessel. Your selection should be based on the current sea conditions.

- **Note:** When a 4G broadband radar is installed, beam sharpening is enabled, resulting in 2X the azimuth resolution — similar to a three-foot length array.

Target trails

Turns on/off shaded echoes of each radar target making it easier to assess the movement of targets relative to your position.



Clearing target trails from the panel

When target trails are displayed on the panel, the radar menu will be expanded to include an option where you can clear target trails from your radar panel temporarily. The target trails will start to appear again unless you switch them off as described above.

Palette

Different colors (palettes) can be used to represent detail on your radar panel. You can select palettes from the Radar settings menu.

Radar orientation

Radar orientation is indicated on the upper left corner of the radar panel as either HU (Heading UP), NO (North Up) or CU (Course up).

Heading up

Rotates the radar image to display the current heading directly up on the radar image.

North up

Rotates the radar image so North is always at the top of the screen.

- **Note:** You must have a heading sensor connected to your system to use North up mode.

Course up

Rotates the radar image to display the current navigation course directly up. This option works only when the unit is navigating an active route. If you are not navigating an active route the heading up orientation will be used until the navigation function is started.

Threshold

The threshold sets required signal strength for the lowest radar signals. Radar returns below this limit will be filtered and not displayed. The default value is 30%.

Fast scan

(Broadband Radar™ only).

Increases the rotation speed of the radar scanner when the range is under 2nm. This option gives faster updates on target movements within this range.

North indicator

Turns on/off viewing of the North indicator on the radar page.

Range rings

Turns on/off viewing of Range rings on the radar page.

Range markers

Turns on/off viewing of Range markers on the radar page. Range rings must be turned on before Range markers can be enabled.

Compass

Turns on/off viewing of the compass overlay on the radar page.

Bearings

Used to select whether bearing will be measured in relation to True Magnetic North or your Relative heading.

MARPA

If your system includes a heading sensor that is connected to the radar, MARPA function (Mini Automatic Radar Plotting Aid) can be used to track up to ten radar targets.

MARPA tracking is an important tool for collision avoidance.

→ **Note:** You must have a heading sensor connected to your system to use MARPA.

MARPA target symbols

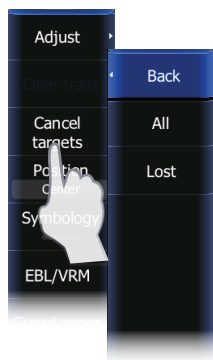
Your unit uses the target symbols shown below.

Symbol	Description
	Acquiring MARPA target. Typically it takes up to 10 full rotations of the scanner
	Tracking MARPA target, not moving or at anchor.
	Tracking and safe MARPA target with extension lines.
	Dangerous MARPA target. A target is defined as dangerous based on the CPA, TCPA and AIS Range settings. Refer to "Vessel alarms" on page 97.
	When no signals have been received within a time limit a target will be defined as lost. The target symbol represents the last valid position of the target before the reception of data was lost.
	Selected MARPA target, activated by tapping on the target icon. The target will return to default target symbol when the cursor is removed.

Tracking MARPA targets

1. Tap on the target on the radar panel
2. Select **Acquire target** from the menu
3. Repeat process for more targets

Once your targets are identified, it may take up to 10 radar sweeps to acquire and then track the target.



Cancelling target tracking

When targets are being tracked, the radar menu will expand to include options for cancelling individual targets or to stop the tracking function.

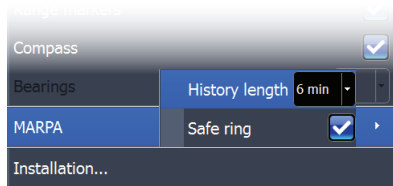
Cancel tracking individual targets by tapping the target and then tapping **Cancel target** on the menu.

Viewing target information

Tap the desired target and then tap Target details on the radar menu.

MARPA target settings

Several vessel settings define alarm limits and how the targets are displayed on your radar image.



Target trails and safe rings

You can define the length of the MARPA trail making it easier to follow target movement.

A circle can be added around the MARPA target to present the danger zone.

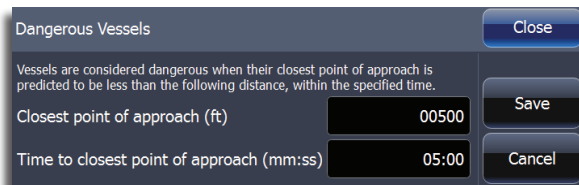
Vessels course extension line

Sets the length of the course extension line for your vessel and for other vessels.

The length of the extension line is either set as a fixed distance or a fixed time period to indicate the distance the vessel will move in the selected time period.

Defining dangerous vessels

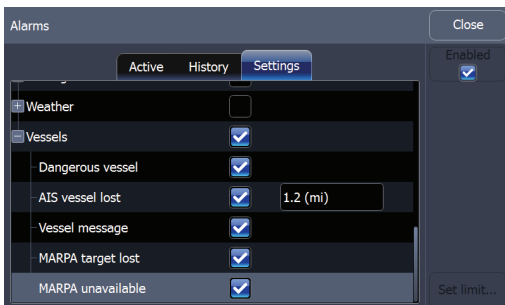
You can define dangerous vessels based upon CPA (Closest Point of Approach) or TCPA (Time to Closest Point of Approach). When



your vessel comes within this distance from a vessel, the symbol will change to the “dangerous” target symbol. An alarm will be triggered if activated in the Alarm settings panel.

Vessel alarm settings

You can define several Vessels alarms to alert you if a target comes within predefined range limits, or if a previously identified target is lost.

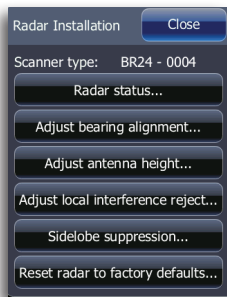


Alarm ID	Description
Dangerous vessel	Controls whether an alarm shall be activated when a vessel comes within the predefined CPA or TCPA. See Defining dangerous vessels above. → Note: The check box controls whether the alarm pop-up box is displayed and if the siren will sound. The CPA and TCPA defines when a vessel is dangerous regardless of the enabled/disabled state.
MARPA target lost	Controls whether an alarm shall be activated when a MARPA target is lost
MARPA unavailable	Controls whether an alarm shall be activated if you do not have the required inputs for MARPA to work (valid GPS position and heading sensor connected to the radar)

Radar overlay

You can overlay the Radar image on the Chart. This can help you to easily interpret the radar image by correlating the radar targets with charted objects. When the radar overlay is selected, basic radar operational functions are available from the Chart page menu.

→ **Note:** You must have a heading sensor connected to your system to use Radar overlay.



Radar installation menu

Setup and configuration of the Broadband radar has been simplified compared to traditional pulse radars. There is no zero range (time delay), no warm up time, and no burn-in required.

Radar status

Displays scanner information, the availability and status of scanner features, and the status of radar peripherals.

Adjust bearing alignment

This is to align with the heading marker on the screen with the center line of the vessel, this will compensate for any slight misalignment of the scanner during installation. Any inaccuracy will be evident when using MARPA or chart overlay.

Point the boat to be perpendicular to the very end of a breakwater or peninsula. Adjust the bearing alignment setting, so that the heading marker and land mass intersect.

Adjust range offset

Eliminates the time lag between real radar returns and the time it takes data to be processed by the radar software. Range offset is also referred to as zero range and trigger delay.

Adjust antenna height

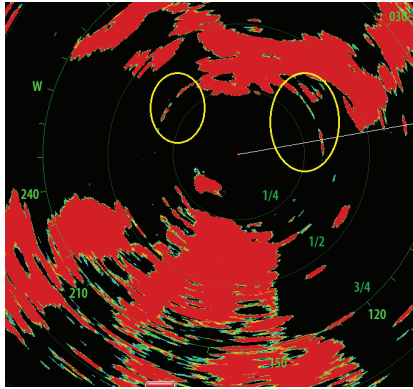
Set the radar scanner height. The Radar uses this value to calculate the correct STC settings.

Tune

Adjustments to this setting should only be performed by a trained radar technician.

Sidelobe suppression (Broadband radar only)

- **Note:** This control should only be adjusted by experienced radar users. Target loss in harbour environments may occur if this control is not adjusted correctly.



Occasionally false target returns can occur adjacent to strong target returns such as large boats or container ports. This occurs because not all of the transmitted radar energy can be focused into a single beam by the radar antenna, a small amount of energy is transmitted in other directions. This energy is referred to as sidelobe energy and occurs in all radar systems.

The returns caused by sidelobes tend to appear as arcs:

When the radar is mounted where there are metallic objects near the radar, sidelobe energy increases because the beam focus is degraded. The increased sidelobe returns can be eliminated using the Sidelobe Suppression control in the Radar installation menu.

By default this control is set to Auto and normally should not need to be adjusted. However, if there is significant metallic clutter around the radar, sidelobe suppression may need to be increased. The control should be adjusted as follows:

1. Set Radar range to between 1/2 nm to 1 nm and Sidelobe Suppression to Auto.
2. Take the vessel to a location where sidelobe returns are likely to be seen. Typically this would be near a large boat, container port, or metal bridge
3. Traverse the area until the strongest sidelobe returns are seen.
4. Change Auto sidelobe suppression to OFF then select and adjust the sidelobe suppression control until the sidelobe returns are just eliminated. You may need to monitor 5-10 radar sweeps to be sure they have been eliminated.
5. Traverse the area again and readjust if sidelobe returns still occur.
6. Exit the installation menu.

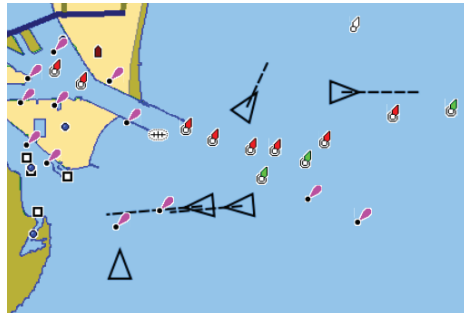
Restore radar to Factory Default

This can be used to revert all user adjustments to factory settings.

17 Using AIS

The marine Automatic Identification System (AIS) is a location and vessel information reporting system. It allows vessels equipped with AIS to automatically and dynamically share and regularly update their position, speed, course and other information such as vessel identity with similarly equipped vessels. Position is derived from the Global Positioning System (GPS) and communication between vessels is by Very High Frequency (VHF) digital transmissions.

If an AIS device is connected, any targets detected by the devices can be displayed and tracked.




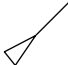

AIS vessels on chart page



AIS targets can be displayed as overlay on radar and chart images, and this feature is an important tool for safe traveling and collision avoidance.

You can define alarms to notify you if an AIS target gets too close or if the target is lost.

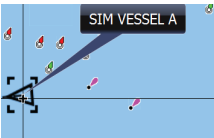
Target symbols

The unit uses the AIS target symbols shown below:

Symbol	Description
	Sleeping AIS target (not moving or at anchor).
	Moving and safe AIS target with course extension line.
	Dangerous AIS target, illustrated with bold line. A target is defined as dangerous based on the CPA and TCPA settings.

	<p>Lost AIS target.</p>	<p>When no signals have been received within a time limit a target will be defined as lost. The target symbol represents the last valid position of the target before the reception of data was lost.</p>
	<p>Selected AIS target, activated by tapping on a target symbol.</p>	<p>The target will return to default target symbol when the cursor is moved.</p>

Viewing information about AIS targets

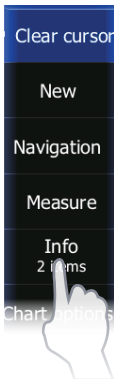


Selecting single AIS targets

When you tap an AIS icon on the chart or radar panel the symbol will change to Selected target symbol, and the vessel name will be displayed.



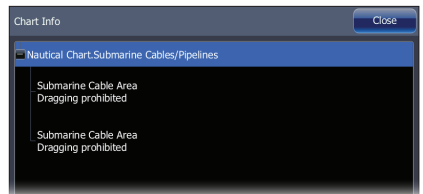
You can display detailed information for a target by activating the menu when the target is selected.



Viewing information about all AIS targets

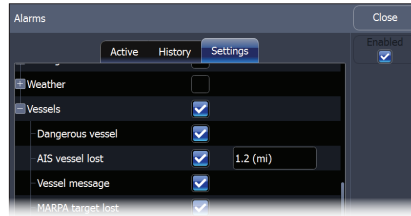
Chart pages

You can view information about all AIS targets within range of your vessel from the menu.



Vessel alarms

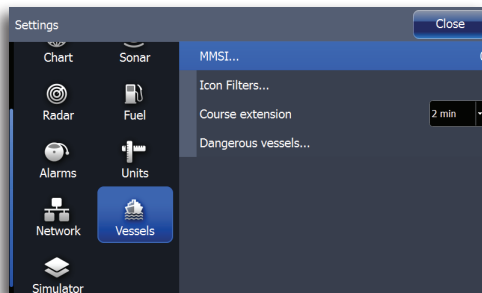
You can define several alarms to alert you if a target comes within predefined range limits, or if a previously identified target is lost. Vessel alarms can be set up from the Alarms utility.



Alarm ID	Description
Dangerous vessel	Controls whether an alarm shall be activated when a vessel comes within the predefined CPA or TCPA. → Note: The check box controls whether the alarm pop-up box is displayed and if the siren will sound. The CPA and TCPA defines when a vessel is dangerous regardless of the enabled/disabled state.
AIS vessel lost	Sets the range for lost vessels. If a vessel is lost within this range this will trigger an alarm
Vessel message	Controls whether an alarm shall be activated when a message is received from an AIS target

The vessel settings panel

Vessel settings are accessed from the Utilities tab on the home-screen.



Your vessel's MMSI number

You need to have your own MMSI (Maritime Mobile Service Identity) number entered in the system to be able to receive addressed messages from AIS and DSC vessels.

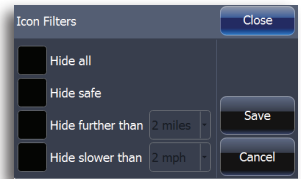
It is also important to have the MMSI number entered to avoid seeing your own vessel as an AIS target on the chart.

→ **Note:** The Vessel message option in the alarm settings must be toggled on if any MMSI message shall be displayed.

Filtering the targets

All targets are by default shown on the display if an AIS device is connected to the HDS system.

You can select to not show any targets, or to filter the icons based on security settings, distance and vessel speed.



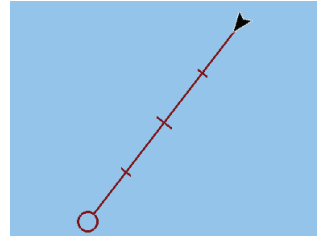
The vessels extension lines

The length of the extension lines for your vessel and for other vessels can be set by the user.

The length of the extension lines is either set as a fixed distance, or to indicate the distance the vessel will move in the selected time period.

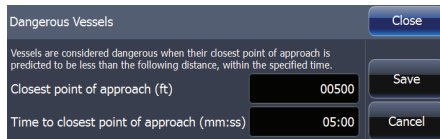
For own vessel heading information is read from active heading sensor, and COG information is as received from the active GPS.

For other vessels COG data is included in the message received from the AIS system.



Defining dangerous vessels

You can define an invisible guard zone around your vessel. When a target comes within this distance from your vessel, the symbol will change to the "dangerous" target symbol and an alarm will be triggered.



18

Networking

You can monitor the performance of NMEA 2000 and Ethernet networks and configure data sources, network devices, waypoint sharing and NMEA 0183 settings.



Auto configuration

After you have installed your NMEA 2000 network, or added/removed a device, you can allow the unit to select network settings by turning on all network devices and tapping **Auto configure** on the network settings menu.

Auto configure will reset data sources to default settings and remove all instances for networked devices.

- **Note:** data sources should only be adjusted by advanced users. Auto configuration will work well for most situations.

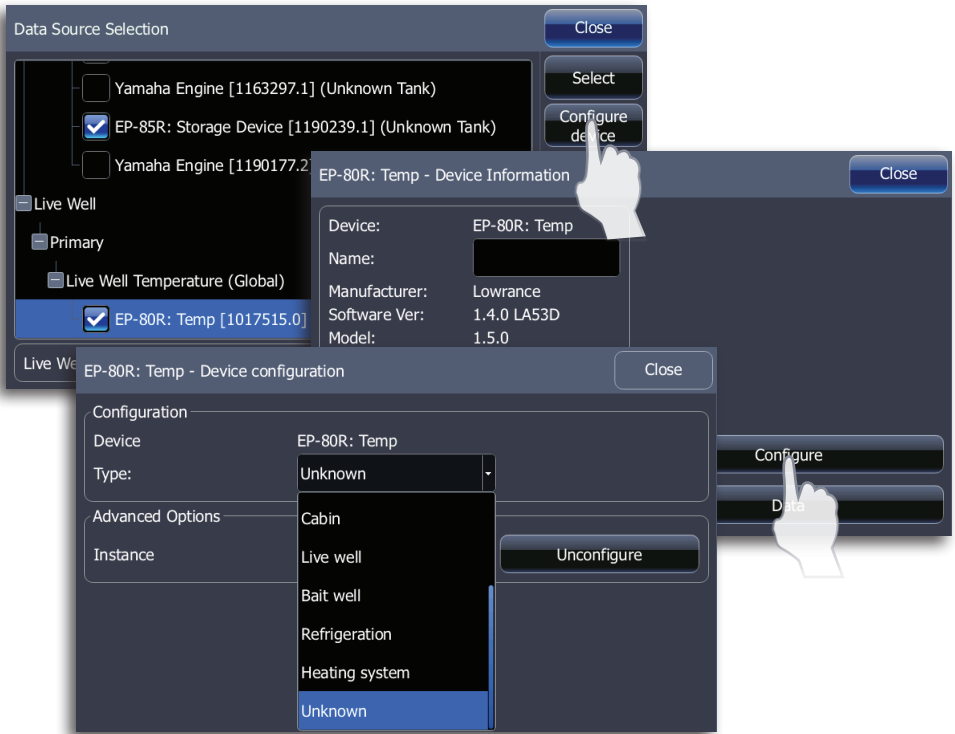
Data sources

Allows you to select the network device that will supply source data for a selected data type.

Tap Data sources to edit source names, change source scope and add/remove data source network instances.

Configuring data sources

Devices can be configured from the Data source menu or from the device list. Select the device from the list and tap **Configure**.



Scope

You can select the Global or Local setting for display units and data sources on the network.

Setting desired data sources to Global scope allows all display units set to Global scope to use the same data sources.

Setting one display unit on the network to Local scope allows you to select data sources independent of other global scope units on the network.

Device	Global	Local
Display units	Automatically uses data from global data sources When a data source is selected by other global scope units, all units switch to same data source	Data sources must be selected manually. Data source selection will not be affected when a different data source is selected on Global scope units
Data sources	Will automatically be selected as the data source for display units set to Global scope Can be selected manually as the data source by units set to Local scope	Can only be selected manually by display units

New

Used to create an instance of a data source.

Remove

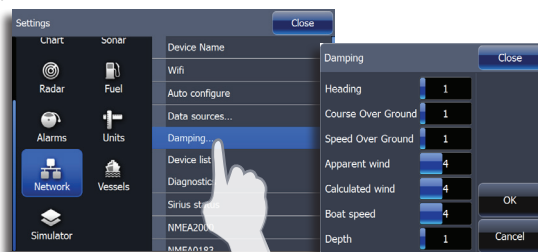
Allows you to remove a device instance from the network.

Renaming a data source

You can rename a data source to make it easier to distinguish between multiple data sources of the same type. Tap Rename and the touchscreen keyboard will appear.

Damping

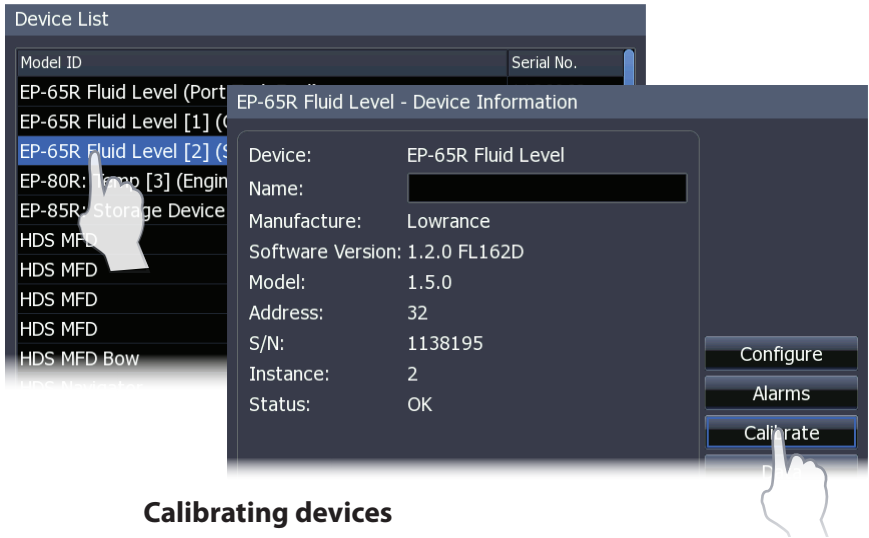
Smooths out fluctuations in data on the display (course over ground, speed over ground, etc.) that occur when navigating at slower speeds.



Damping accomplishes this by averaging the data. The higher the damping level, the more data history will be averaged. As a result, higher damping levels cause a delayed response to changes in the data.

Device list

Tap device list to view all devices connected to a NMEA 2000 network. You can configure and calibrate (where applicable) devices shown on the device list.



Calibrating devices

Devices that can be calibrated from the device list will have a Calibrate button on the Device information dialog.

Tap **Calibrate** and follow the onscreen instructions to calibrate the device.

→ **Note:** for more information on device calibration, refer to the documentation that came with your device.

Diagnostics

Used to view NMEA 2000 network information and the status of information shared between units. From the UDB tab, you can see IP addresses of attached Ethernet devices and if an Ethernet cable is connected or unplugged.

SIRIUS status (US only)

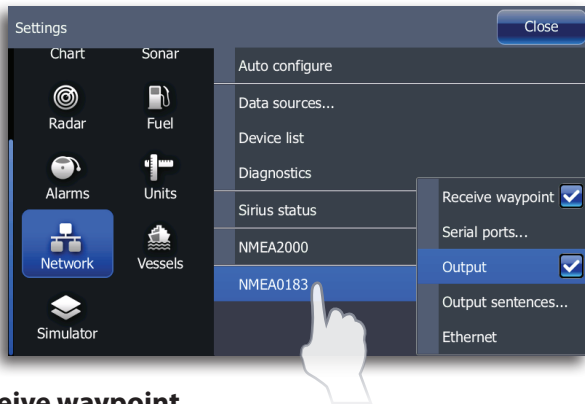
You can view your ESN number, SIRIUS subscription status and signal strength. You must have a SIRIUS weather and/or audio subscription to view SIRIUS information.

NMEA 2000

Turns on/off sharing/receiving of waypoints across a NMEA 2000 network. You can also turn on backlight sync, which allows all unit backlights to be adjusted from any display unit on the network.

NMEA 0183

Used to configure the display unit to send/receive NMEA 0183 data.



Receive waypoint

Turns on/off capability to receive waypoints across a NMEA 0183 network.

Serial ports

Configures communication ports to share data with other devices.

Output

Turns on/off NMEA 0183 data output transmissions.

Output sentences

Used to select the NMEA 0183 output sentences your unit will use when communicating with other NMEA 0183 devices. The default setting will work well with most configurations.

Ethernet

Displays the unit's IP address on the Ethernet network.

19

GoFree wireless

With a WIFI-1 unit connected to an HDS unit you can use a wireless device to view or remotely control the HDS display. Displaying HDS data on a wireless device requires a corresponding app. Please check the appropriate Apple or Android store for your device.

- **Note:** In this document we have used the term **wireless devices**, and graphics from iPad and App Store are used as examples. The wireless functionality, however, is provided for other vendor's tablets or smartphones. Tablets can be used for viewing and controlling the HDS unit when relevant apps are available. Smartphones can only be used as an HDS viewer.
- **Note:** Installation and wiring for the WIFI-1 unit is described in the separate WIFI-1 Installation Guide.
- **Note:** GoFree wireless is not compatible with HDS Gen1 units. If an HDS Gen1 unit is on the same network as a GoFree module, networking will no longer be functional.

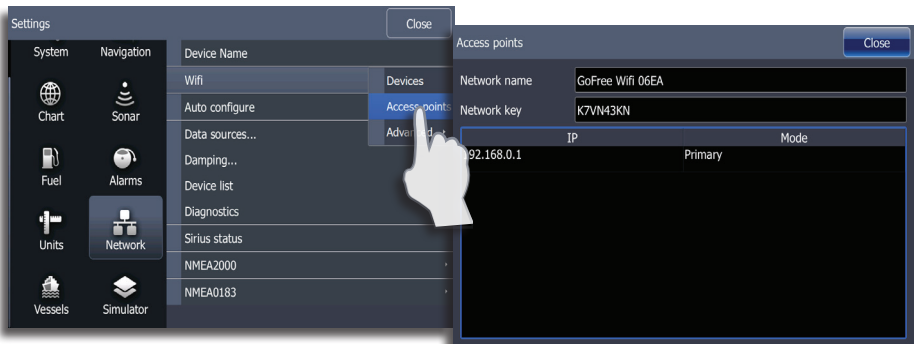
Setting HDS device name

You will only need to change your unit's name when HDS units on the network have the same default device name.

Setting up the WIFI-1

Connect the WIFI-1 unit to the HDS unit with the Ethernet cable supplied with the WIFI-1 unit

- The WIFI-1 access point will now be listed in the HDS Network menu



Downloading the GoFree app

Download the Lowrance GoFree Controller & Viewer app to your wireless device from the Apple App Store or Android Google Play app store.

Connecting the wireless device to the WIFI-1

Set up the wireless device's network to be the WIFI-1 defined as primary access point.



Enable/disable wireless control of HDS

Start the app, and tap the HDS unit icon in the GoFree Controller page to request remote control of the HDS unit.

- **Note:** Older versions of the Android operating system do not support display unit autodiscovery. If no units appear on the Lowrance GoFree Controller screen, follow the onscreen instructions.

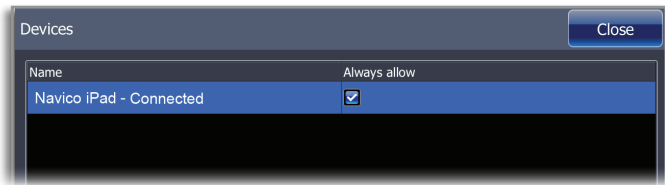


The first time you request control from the wireless device, the HDS unit will prompt you to confirm remote control from this device.



When control is confirmed, the connection will be immediately established.

- **Note:** If control is rejected the wireless device will mirror the HDS screen, but no operation will be allowed from the remote device. All connected wireless devices will be listed in the HDS dialog, and you can change the access level for all connected devices.



Operating the HDS with a wireless device

When remote control is accepted, the HDS page will be mirrored to the wireless device.

The HDS image includes softkeys. Tapping these keys works as operating the similar hard keys on the HDS screen.



Lets you select which unit to control if more than one is connected to the active WIFI-1 unit

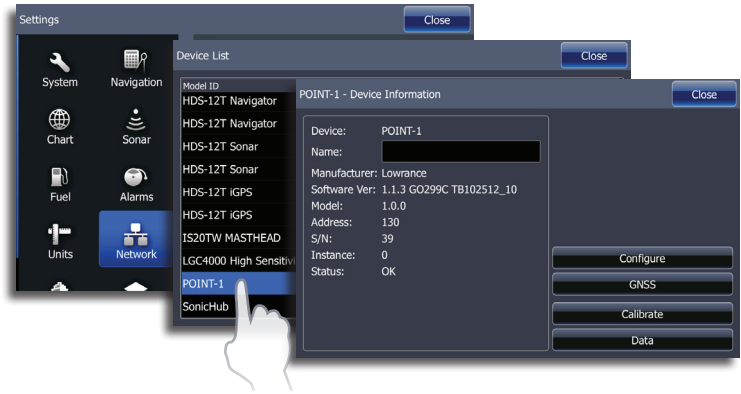


Returns to the GoFree Controller page.

20

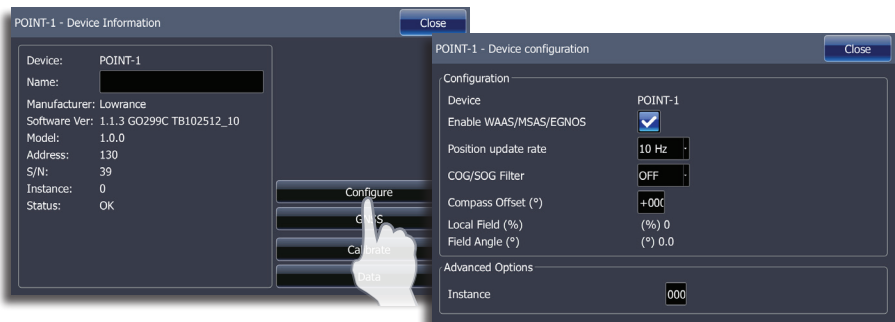
Point 1 antenna

Point 1 configuration



Enabling WAAS/MSAS/EGNOS

Select WAAS/MSAS/EGNOS to use the satellite based augmentation system (SBAS), which can increase accuracy of a GPS fix to within approximately 1m. WAAS covers North America, MSAS covers East Asia (primarily Japan), and EGNOS covers Europe.



Position Update

Position update rate may be adjusted (1Hz, 5Hz or 10Hz) to suit your vessel and to minimize unnecessary NMEA 2000 data traffic. For high speed vessels, the maximum update rate will be desired for measuring performance to the highest possible accuracy. On slower vessels, and large networks with a lot of network traffic, it may be preferable to reduce the network load.

COG/SOG Filter

Averages COG/SOG data to smooth out displayed values. The best setting will depend on the type of vessel and user preference.

Compass Offset

Offset may be applied to correct for small errors seen in the orientation relative to the bow of the vessel. This would typically be the result of the antenna not being physically 100% parallel with the center line of the vessel. To determine a correction value, a reliable hand bearing or fixed magnetic compass should be used for reference.

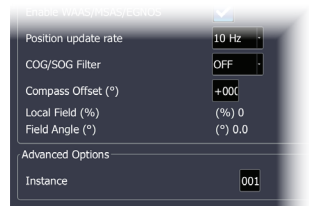
→ **NOTE:** Ensure calibration of compass is completed prior to adjusting the offset.

Instance

If more than one device of the same type exists in the network, the instance number may be changed to a unique number to allow easier identification.

Disabling the heading sensor

Set the Point 1 instance value to 001 to disable the heading sensor. This is useful when more than one Point 1 antenna is installed on the same network and you only want to receive data from one of the heading sensors.



→ **NOTE:** When the Point-1 detects another heading source in the network, it will automatically disable its own heading output in preference of the other source.

GNSS Configuration

The GPS and GLONASS options may be enabled simultaneously, or individually. Generally, GPS offers the highest accuracy, but in certain circumstances a better fix may be achieved with both or only GLONASS enabled.



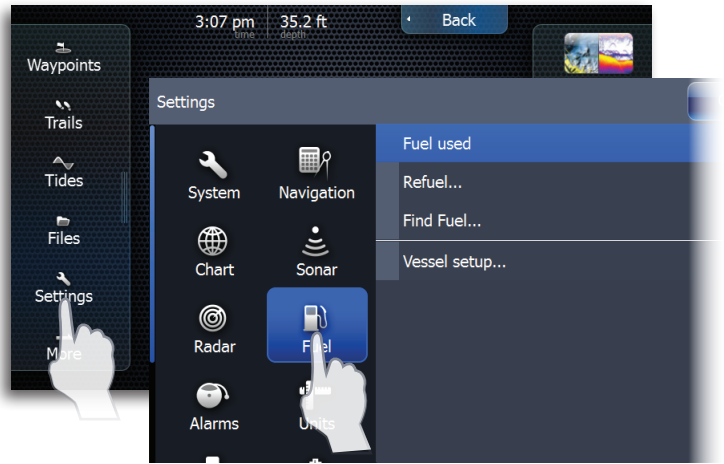
Calibrate

With the Point 1 mounted securely in its permanent location, follow the on-screen instructions to calibrate the compass.

21

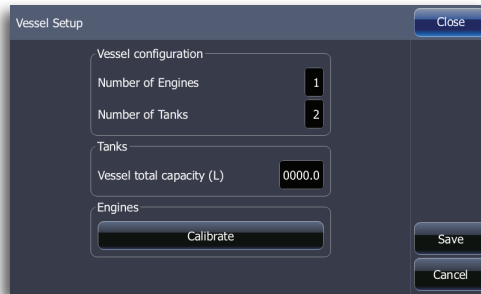
Fuel

The fuel utility allows your unit to calculate and monitor the overall fuel performance of your vessel. The Fuel utility requires a fuel used sensor, like a Lowrance Fuel Flow sensor, an engine interface with fuel used output capability, or a Lowrance Storage Device.



Vessel setup

You will use vessel setup to select the number of engines, the number of tanks and vessel's fuel capacity.



Refuel

Used to enter the amount of fuel added to the tanks and to calibrate the fuel flow or applicable sensor.

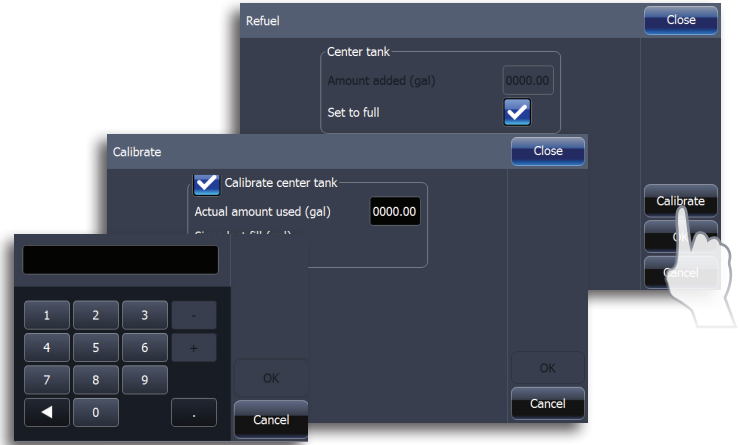
Filling the tank

After filling the tank, tap **Set to full** on the Refuel dialog and tap **OK**.

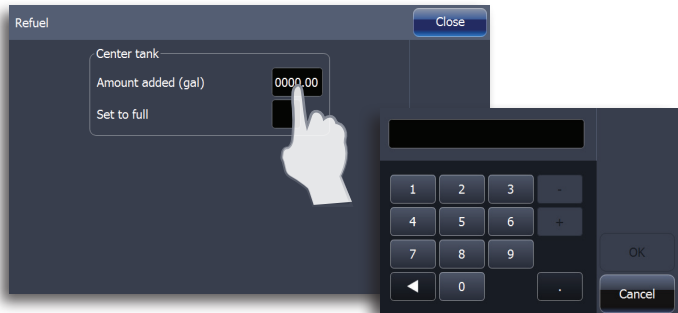
➔ **Note:** When configuring the fuel utility, you must fill the tank to calibrate the fuel flow or engine interface.

Calibration

If you need to calibrate a tank, fill the tank, tap the **Set to full** checkbox, and proceed to tank calibration.



If you add fuel, but do not fill the tank, you must enter the amount of fuel added to the tank to ensure the accuracy of fuel economy calculations.



Fuel used

Allows you to view the amount of fuel used since you last refueled, fuel used on your current trip, and fuel used for a season.

Find fuel

Allows you to search for fueling stations near your location. Find fuel search results can be sorted by distance, cost and fuel type.

➔ **Note:** You must have a LWX module and a SIRIUS data subscription to use the Find Fuel feature.

22

SIRIUS™ weather (North America only)

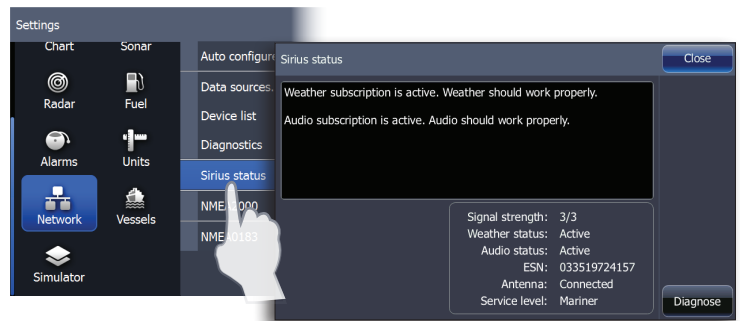
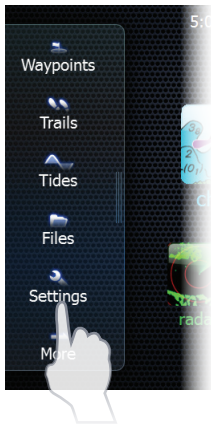
When connected to a Navico Weather Module, you can subscribe and include SIRIUS™ audio and SIRIUS™ Marine Weather Service on your system (North America only).

SIRIUS™ audio and weather service covers inland US waters and coastal areas into the Atlantic and Pacific oceans, Gulf of Mexico and the Caribbean Sea.

The audio and weather products received vary depending on your selected subscription package. For more information refer to www.siriusxm.com/marine-weather.

SIRIUS™ status

When the weather module is connected to the system, you will get access to the SIRIUS™ status panel.



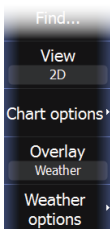
Signal strength is indicated as 1/3 (weak), 2/3 (good) or 3/3 (preferred).

The ESN shows the electronic serial number for the weather module.

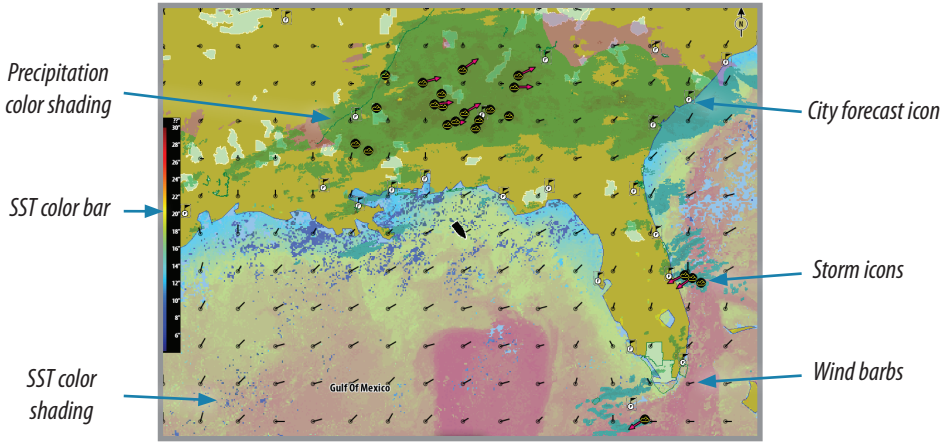
The weather display

The SIRIUS™ weather can be displayed as an overlay on your chart panel.

When weather overlay is selected, the chart menu will increase to show the available weather options.



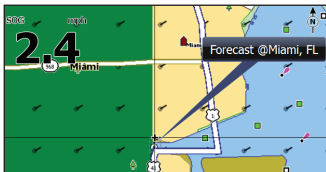
➔ **Note:** Weather options will not be shown when the cursor is active.



Showing detailed weather information

When you tap a shaded weather area, available information will be shown in the cursor window.

When you tap a weather icon, detailed information about the observation will be displayed.



Forecast for Miami, FL Close

Wednesday night
Variable clouds with scattered showers. Low 69F. Winds ENE at 5 to 10 mph. Chance of rain 30%.

Thursday
Mainly sunny. High near 80F. Winds ESE at 5 to 10 mph.

Thursday night
Fair to partly cloudy. Low 67F. Winds light and variable.

Back

View

Icons

Marine zones

Tropical statements

Adjust

Animate

Transparency
Min

Back

Precipitation

SST colored

SST text

Forecast wave c...

Forecast wind b...

Weather symbology

Precipitation

Shades of color are used to show precipitation type and intensity. Darkest color indicates highest intensity.

Precipitation type	Color codes
Rain	From light green (light rain) - yellow - orange - to dark red (heavy rain)
Snow	Blue
Mixed	Pink

Sea surface temperature (SST)

Can be shown as color shading or text.

When color coding is selected, the SST color bar will be shown on the left side of the display.

You can define which temperature range that shall be color coded as described later in this section.

Wave indication

Colors are used to indicate forecasted wave height. Dark red indicate the highest waves, while blue are used for the lowest.

You can define which height range that shall be color coded as described later in this section.

Wind symbols

Length and rotation of the barbs indicate wind direction and speed.



Adjusting the color shading

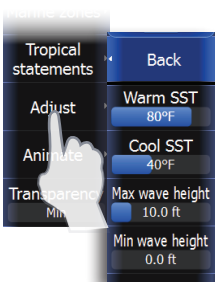
You can define the sea surface temperature range and wave height color coding.










The temperature above warm and below cool values will be displayed as progressively darker red and darker blue.

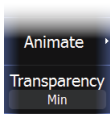
Waves higher than the maximum value will be indicated with progressively darker red. Waves lower than the minimum value will not be color coded.

Weather icons

Several weather icons are available to show current or predicted weather conditions. You can tap an icon to display detailed weather information.

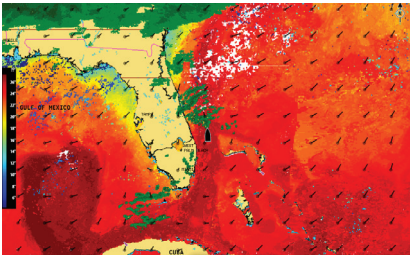


Icon	Description
	City forecast
	Surface observation
	Tropical storm tracking; past (grey) - present (red) - future (yellow)
	Hurricane (category 1-5) tracking; past (grey) - present (red) - future (yellow)
	Tropical disturbance/depression tracking; past (grey) - present (red) - future (yellow)
	Storm attributes
	Lightning
	Watch box location and warning
	Marine zone location

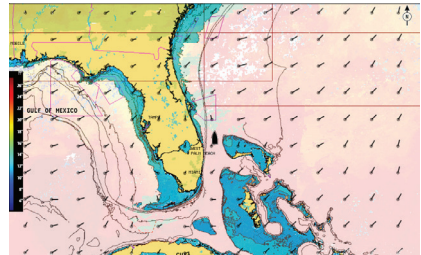


Weather overlay transparency

The opaqueness of the weather overlay can be adjusted.



Min transparency

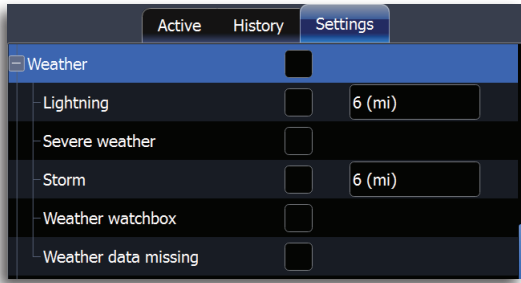


Max transparency

Weather alarms

You can setup the lightning or storm alarms to be within a certain range of your vessel.

You can also get an alarm if a severe weather forecast alarm is issued for your chosen marine zone.



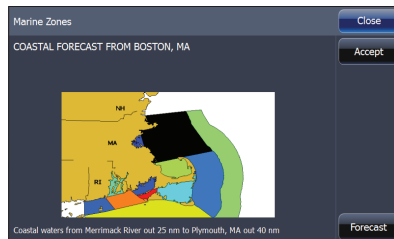
A watchbox is defined by the National Weather Service. When the alarm is turned on you will get an alarm if your vessel is inside or moves into a watchbox. Access the Alarms utility to set up weather alarms.

Weather reports

Marine zones

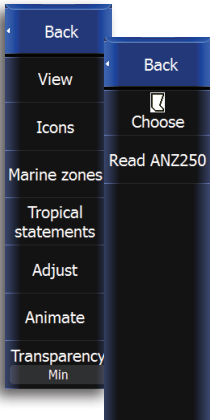
SIRIUS™ service includes access to weather reports for all U.S. Marine Zones, with the exception of the high seas zones.

You can setup the system to read the forecast for a selected area. Tap the selected zone, and tap **Accept** to confirm your selection.



Tropical statements

You can read tropical statements including information about tropical weather conditions. These statements are available for the entire Atlantic and the Eastern Pacific. You can access tropical statements from the Weather options menu.



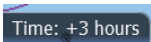
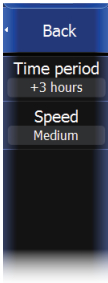
Animating SIRIUS™ weather graphics

This unit records the weather information you have turned on, and this information can be used to animate past or future weather conditions. The amount of information available in the system depends on the amount of weather activity,- the more complex it is the less time will be available for animation.

You can animate the past or the future depending on which weather view you have turned on:

- if the precipitation overlay was turned on, you can animate for the past and only assume weather conditions in the immediate future.
- if the colored wave height overlay was turned on, you can animate the future (the predictions)

When activated the time for the current graphic animation will be displayed in the lower left corner of the chart panel.



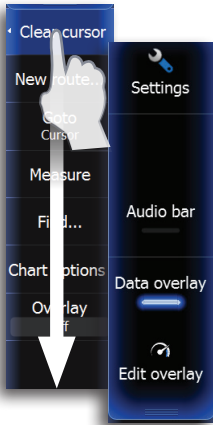
23

Audio

When this unit is connected to a SonicHub server you can use your unit to control audio playback from iPod, iPhone, USB mass storage device (mp3) and AM/FM radio. Before playing FM radio through the SonicHub, you must purchase a marine-grade AM/FM antenna.

When connected to a LWX Satellite module you can subscribe and include SIRIUS™ audio. SIRIUS™ audio and weather service covers inland US waters and coastal areas into the Atlantic and Pacific oceans, Gulf of Mexico and the Caribbean Sea. The SIRIUS™ audio products received vary depending on your selected subscription package. For more information refer to www.siriusweather.com.

Before you can start using your equipment, it must be installed according to the Installation manual included with the unit.



Enabling audio

Tap **Audio bar** on the hidden system menu to enable audio.

The audio media bar

When audio is enabled, the media bar will appear at the bottom of the screen on all pages. The media bar varies from one audio source to another.

You switch focus between pages and the media bar by tapping on the selected panel.

The menus differ from one audio source to another as shown in the following sections.



Operating the audio source

Selecting the audio source

You switch between available audio sources from the Source menu.

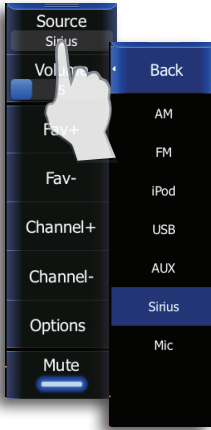
→ **Note:** The Mic source selects a high voltage level input allowing you to broadcast loud hailer messages over the audio system.

Adjusting the volume

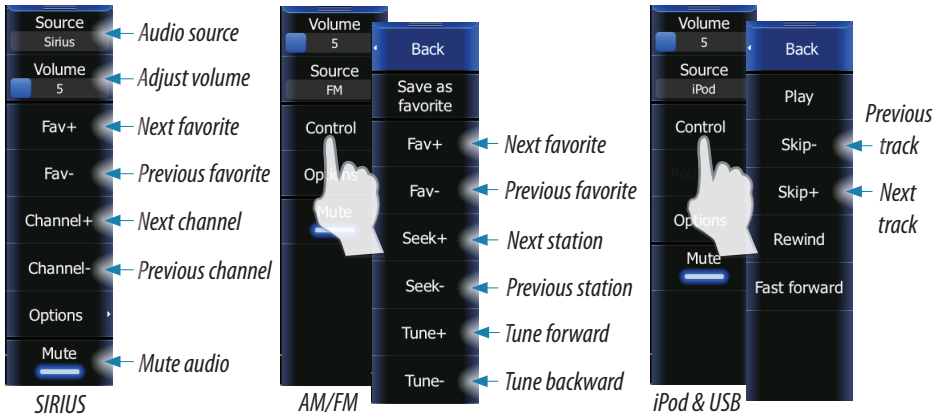
The volume is adjusted by pressing the dedicated zoom keys or by tapping **Volume** on the menu and then dragging your finger on the slide bar.

Muting

You can toggle muting on/off by tapping **Mute** on the menu.



Audio controls

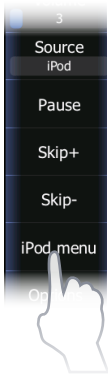


→ **Note:** For iPod, iPhone or USB, tap and hold **Skip +** or **Skip -** to fast forward or rewind the current track.



Shuffle and repeat

Shuffle and repeat are turned on/off from the audio menu. The icons will be blue when the function is turned on.



The playback menu

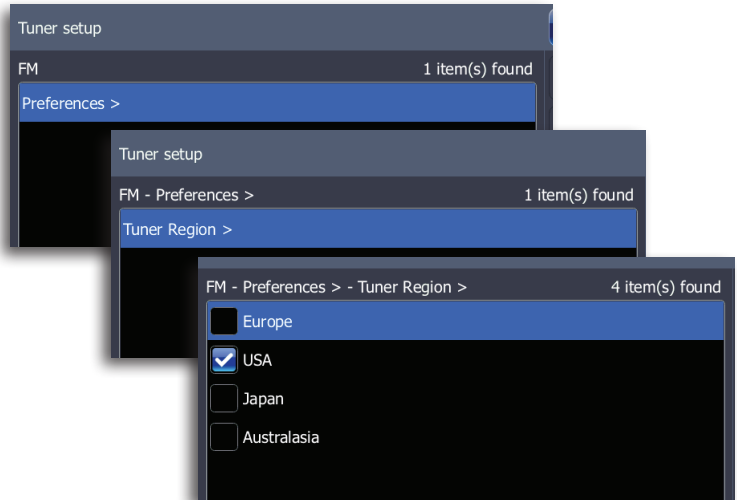
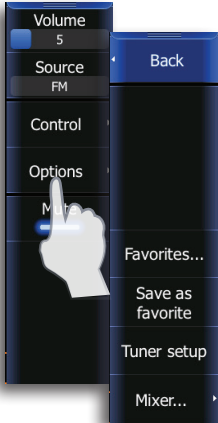
The playback menus includes an option giving access to the source's native menu or file structure, used for selecting tracks.

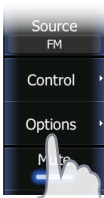


Using the AM/FM radio

Selecting AM/FM tuner region

Before playing FM or AM radio, you must select the appropriate AM and FM tuner regions for your location.

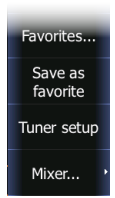




Saving a channel to the favorite list

When the channel is tuned in, you can add the stations to your favorite list.

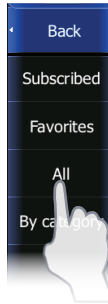
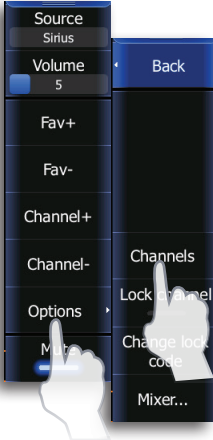
All favorite channels can be viewed, selected and deleted from within this list.



Using SIRIUS radio

The channels list

The channels list displays all available SIRIUS channels, whether or not you have a subscription for the channel.

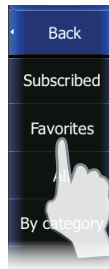


Chan	Description	Favorite	Status
084	ESPN Radio	<input checked="" type="checkbox"/>	Subscribed
085	ESPN Xtra	<input type="checkbox"/>	Subscribed
086	Mad Dog Radio	<input type="checkbox"/>	Subscribed
088	NFL Radio	<input checked="" type="checkbox"/>	Subscribed
090	NASCAR Radio	<input type="checkbox"/>	Subscribed
091	College Sports	<input type="checkbox"/>	Subscribed
092	Sports 92	<input type="checkbox"/>	Subscribed

The favorites list

You can create a list of your favorite SIRIUS channels from within the channels list. You will not be able to add unsubscribed channels.

When a favorite list is available, you scroll through the list by dragging the screen vertically.



Chan	Description	Category
088	NFL Radio	Sports
038	Boneyard	Rock
039	Hair Nation	Rock
046	Backspin	Hip-Hop/R&B
067	Real Jazz	Jazz/Standards
084	ESPN Radio	Sports

Locking channels

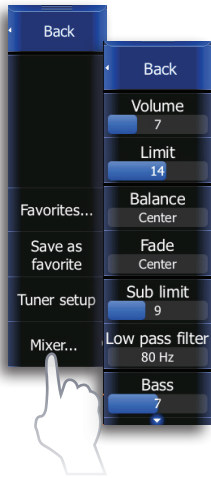
You can lock selected SIRIUS channels from being broadcast unless an unlock code is entered.

When the function is activated, a 4 digit code must be entered before the locking is activated.

The same code must be entered before a locked channel can be released.

Mixer

You can make adjustments to audio settings by tapping **Mixer** on the audio options menu.



24

Maintenance

Preventive maintenance

The unit does not contain any field serviceable components, therefore the operator is required to perform only a very limited amount of preventative maintenance.

It is recommended that you always fit the supplied protective sun cover when the unit is not in use.

Simple maintenance procedures

Cleaning the display unit

Where marks on the screen can't be removed by a microfiber cloth, use a 50/50 mixture of warm water and isopropyl alcohol to clean the screen. Avoid any contact with solvents (acetone, mineral turpentine etc.), Ammonia-based or vinegar-based cleaning products as they may damage the anti-glare layer, plastics bezel, or rubber keys.

To prevent UV damage to the plastic bezel and rubber keys, it is recommended that the sun cover be fitted when the unit is not in use for an extended period.

Checking the keys

Make sure that no keys are stuck in the down position. If one is stuck, wiggle the key to free it back to normal.

Checking the connectors

The connectors should be checked by visual inspection only.

Push the connector plugs into the connector, if the connector plugs are equipped with a lock; ensure that this is in the correct position.

Touchscreen Calibration

1. Turn the unit off
2. Press and hold the **WAYPOINT** key, then turn the unit on
3. Hold the **WAYPOINT** key during power on, until the calibration utility screen comes up
4. Touch crosshair shown on screen to perform nine points calibration
5. After successful calibration the unit will return to normal application screen

Software upgrades

The latest software for this unit will be available for download from our web site; www.lowrance.com

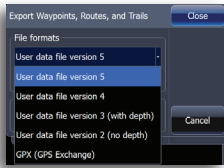
Detailed instructions for how to install the software will follow the upgrade files.

For more details about software upgrades, refer to the separate Installation manual.

Troubleshooting

Failure	Corrective action
One or more functions do not operate as normal	Restore defaults as described in “Restore defaults” on page 78
Normal operation is not possible and restoring defaults does not fix the problem	Switch off the unit, press and hold the zoom in and out keys and switch on the unit. Release the zoom keys after hearing a second beep confirming the reset

Backing up your system data



Waypoints, routes, trails that you create are filed on your system. It is recommended to regularly copy these files and your system settings files as part of your back-up routine.

The files are copied to a SD card inserted in the card slot on the front of your unit.

Different output formats are available:

User Data File version 5	Used to transfer data from one HDS Gen2 Touch system to another
User Data File version 4	Used to transfer data from one HDS system to another.
User Data file version 3 (with depth)	Can be used when transferring user data from an HDS system or Mark/Elite to a legacy Lowrance (LMS, LCX, etc)
User data file version 2 (no depth)	Can be used when transferring user data from an HDS system to a legacy Lowrance (LMS, LCX, etc)
GPX (GPS Exchange)	This is the format most used on the web that shares among most GPS systems in the world. Use this format to transfer data to a competitor’s unit.

Exporting waypoints, routes and trails

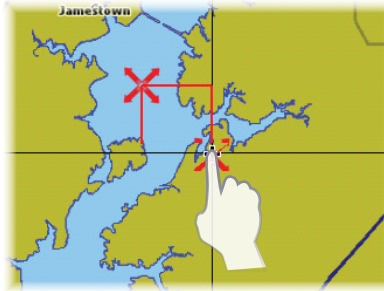
1. Access the Files utility
 2. Tap **Waypoints, Routes and Trails database**
 3. Tap **Export**
 4. Select the desired file format
 5. Select destination folder
 6. Enter a name for exported file
 7. Tap **Enter**
- **Note:** To export waypoints, routes and trails to a non-HDS unit, select a compatible file format and export the file to a SD or microSD card that works with the non-HDS unit.



Export region

The example shows how to export waypoints, routes and trails from a particular region.

1. Access the Files utility
2. Tap **Waypoints, Routes and Trails database**
3. Tap **Export region**
4. Drag the red boundary box around the desired region
5. Tap **Export**
6. Select the desired file format
7. Select destination folder
8. Enter a name for exported file
9. Tap **Enter**



- **Note:** To export waypoints, routes and trails to a non-HDS unit, select a compatible file format and export the file to a SD or microSD card that works with the non-HDS unit.

25

Index

A

AIS

- Defining dangerous vessels 98
- Filtering targets 98
- MMSI number 98
- Selecting targets 96
- Target information 96
- Vessel alarms 97
- Vessels extension lines 98

Alarms

- Acknowledge 71
- Active alarms 73
- Alarm history 73
- Alarm settings 73
- Message types 70

Audio

- AM/FM radio 120
 - Saving favorites 121
 - Selecting tuner region 120
- Audio bar 118
- Audio controls 119
- Enabling audio 118
- Mixer 122
- Muting 119
- Selecting audio source 119
- Shuffle and repeat 120
- SIRIUS radio
- Volume 119

B

- Backing up system data 124

C

- Cancel navigation 14, 38

Chart

- 3D 23
- 3D boat selection 27
- Categories 25
- Creating routes 21

- Detail 24

- Find 22

- Grid lines 28

- Heading & course extension 27

- Look ahead 23

- Mapping imagery 24

- Measuring distance 21

- Navionics 28

- Objects 25

- Orientation 22

- Overlay 26

- Panning 20

- Pop-up information 28

- Range Rings 27

- Saving waypoints 21

- Scale 20

- Selecting data 26

- Settings 27

- Sharing data 26

- StructureMap 60

- StructureMap overlay 60

- Coordinate system 78

Cursor

- Cursor assist mode 13

- Goto 20

- Panning 13

D

- Data overlay 18

- Datum 77

- Device configuration 9

- Dialogs 12

- DownScan 55

F

- Favorites panel 8

Files 74

- Copying all files 75

- Copying files to SD card 75

- Viewing screenshots 74

- Fishing modes
 - Reset fishing mode 51
- Fuel
 - Find fuel 111
 - Fuel used 111
 - Refueling 110
 - Calibration 111
 - Vessel setup 110

G

- GoFree wireless 104, 107
 - Connecting to the WIFI-1 105
 - Downloading GoFree app 105
 - Enabling control of HDS 105
 - Operating HDS 106
 - Operating the HDS 106
 - Setting HDS device name 104
 - Setting up WIFI-1 104

H

- Hidden system menu 11
- Hiding page menu 11

I

- Instrument panels
 - Customizing 66
 - Dashboards 66
 - Editing 67

K

- Key beeps 77

L

- Language 77
- Log sonar
 - Bytes per sounding 46
 - Log all channels 46
 - Viewing sonar data 46
- Loran 39
 - Phantom loran 39
 - Settings 39

M

- Magnetic variation 78
- Maintenance 123
 - Exporting waypoints, routes and trails 125
 - Export region 126
 - Touchscreen Calibration 123
- Man overboard waypoint 14
- MARPA 89
- Menus 10
 - Hidden system menu 11
 - Page 10
- MOB key 7

N

- Navigation
 - Arrival radius 39
 - Cancel 14
 - Cancel navigation 38
 - Goto cursor 37
 - Loran settings 39
 - Phantom Loran 39
 - Routes 37
 - Trails 39
 - XTE limit 39
- Navionics 28
 - 3D 28
 - Annotation 31
 - Change to Lowrance 30
 - Chart details 31
 - Colored Seabed Areas 31
 - Community layer 29
 - Contours depth 31
 - Depth range (highlighting) 30
 - Dynamic Icons 29
 - Easy view 29
 - Fish'n Chip 30
 - Look ahead 28
 - Photo overlay 29
 - Photo transparency 30
 - Presentation type 31
 - Rock filtering 31

- Safety depth 31
- Shading 29
- Shallow water highlighting 30
- Synchronize 2D/3D chart 28
- Networking
 - Auto configuration 99
 - Damping 101
 - Data sources 99
 - Configuring 100
 - New 101
 - Remove 101
 - Renaming a data source 101
 - Device List
 - Calibrating devices 102
 - Diagnostics 102
 - Ethernet 103
 - NMEA 0183 103
 - NMEA 2000 103
 - Network StructureScan 59
 - NMEA 0183 103
 - NMEA 2000 103

O

- Overlay Downscan 51

P

- Pages
 - Active panel 16
 - Adjusting split panels 16
 - Chart 19
 - Customizing 16
 - Data overlay 18
 - Favorites 16
 - Overview 15
 - Quick splits 15
- PDF reader 76
- Point 1 antenna
 - COG/SOG Filter 108
 - Configuration 107
 - Configure/Offset 108
 - Disabling heading sensor 108

- GNSS Configuration 109
- Position Update 107

R

- Radar
 - Antenna height 93
 - Bearing alignment 93
 - Bearings 89
 - Compass 89
 - Dangerous vessels 91
 - EBL/VRM 85, 86
 - Adjust 86
 - Data box 86
 - Set offset 86
 - Fast scan 89
 - Gain 83
 - Guard zones
 - Adjust 87
 - Alarm when 87
 - Sensitivity 87
 - Shape 87
 - Guard Zones 86
 - Interference rejection 84
 - MARPA 89
 - Cancelled target tracking 90
 - Target settings 91
 - Target symbols 90
 - Target trails and safe rings 91
 - Tracking targets 90
 - Viewing target info 91
 - Measuring range & bearing 83
 - Orientation 88
 - Overlay 92
 - Palette 88
 - Position 84
 - Radar status 93
 - Rain clutter 84
 - Range 82
 - Range offset 93
 - Range rings 83, 89

- Restore defaults 94
- Sea clutter 83
- Sidelobe suppression 93
- STC curve 88
- Symbology 85
- Target expansion 87
- Target trails 88
- Threshold 89
- Vessel alarm settings 92
- Restore defaults 78
- Routes
 - Create from chart 34
 - Create from waypoints 35
 - Editing 35

S

- Satellites 74
- Screen captures 14
- SideScan 54
- Simulator
- SIRIUS status 103
- Sonar
 - A-scope 49
 - Auto range 44
 - Bottom lock 47
 - Colorline 47
 - Custom range 44
 - Depth line 49
 - Fish ID 49
 - Fishing modes 51
 - Flasher 47
 - Frequency 44
 - History preview 43, 49
 - Keel offset 52
 - Log sonar data 45
 - Manual mode 45
 - Measuring distance 49
 - Networking 50
 - Source 50
 - Noise rejection 45
 - Palettes 49
 - Pausing sonar 50
 - Ping speed 45

- Range 44
- Saving waypoints 42
- Scroll speed 45
- Sensitivity 46
- Sonar source 50
- Splitscreen 47
- Stop sonar 50
- Structurescan overlay 51
- Surface clarity 45
- Transducer type 53
- Viewing history 43
- Zoom bars 42
- Steer page 40
 - Course line 40
 - Data fields 40
 - Off course limit 40
 - Vessel symbol 40
- StructureMap
 - Accessing files on SD card 64
 - Contrast 63
 - Enabling overlay 60
 - Frequency 63
 - Logging data 63
 - Converting files 63
 - High resolution 64
 - Noise rejection 63
 - Palette 63
 - Range 62
 - Scanning fishing areas 65
 - Selecting source 60
 - Live mode 61
 - Saved mode 61
 - Sharing files 65
 - Transparency 62
 - Using with mapping cards 64
 - Water column 63
- StructureScan HD
 - Auto range 57
 - Contrast 58
 - DownScan 55
 - Flip left/right 58
 - Frequency 57
 - History preview 56, 58
 - Log sonar 58

- Measuring distance 59
- Networking 59
- Noise Rejection 57
- Palette 58
- Pausing sonar 59
- Preset range levels 57
- Range 57
- Stop sonar 59
- Surface clarity 57
- View
 - Downscan 58
 - Sidescan 58
- Viewing history 56
- System settings 77
 - Advanced 78
 - Coordinate system 78
 - Datum 77
 - Key beeps 77
 - Language 77
 - Magnetic variation 78
 - Restore defaults 78
 - Satellites 78
 - Time 77
 - Units 78

T

- Tides 74
- Touchscreen calibration 123
- Trails
 - Creating 36
 - Logging type 39
 - Settings 36
- Troubleshooting 124

U

- Units 78
- Using the touchscreen 9
- Utilities
 - Alarms 73
 - Files
 - Copying files 75
 - Find 73
 - PDF reader 76

- Satellites 74
- Sun/moon 73
- Tides 74
- Trip Calculator 73
- Vessels 72
- Waypoints/routes/trails 73

V

- Vessels 72
 - Message listing 72
 - Status listing 72
- Video

W

- WAAS/MSAS/EGNOS 107
- Waypoints
 - Alarms 34
 - Creating 33
 - Editing 33
 - Exporting 34
- Waypoints, routes and trails
 - Exporting data 125
 - Export region 126
- Weather
 - Adjusting color shading 114
 - Alarms 115
 - Animating weather graphics 117
 - Overlay transparency 115
 - Precipitation 113
 - SIRIUS status 112
 - Symbology 113
 - Transparency 115
 - Wave indication 114
 - Weather reports 116

Navico Databases License Agreement

THIS IS A LEGAL AGREEMENT BETWEEN THE END-USER WHO FIRST PURCHASES THIS PRODUCT AS A CONSUMER ITEM FOR PERSONAL, FAMILY, OR HOUSEHOLD USE ("YOU") AND NAVICO, THE MANUFACTURER OF THIS PRODUCT ("WE", "OUR", OR "US"). USING THE PRODUCT ACCOMPANIED BY THIS LICENSE AGREEMENT CONSTITUTES ACCEPTANCE OF THESE TERMS AND CONDITIONS. IF YOU DO NOT ACCEPT ALL TERMS AND CONDITIONS, PROMPTLY RETURN THE PRODUCT WITHIN 30 DAYS OF PURCHASE. PLEASE RETURN USING THE ENCLOSED UPS SHIPPING LABEL AND INCLUDE: PROOF OF PURCHASE, NAME, ADDRESS, AND PHONE NUMBER. YOUR PURCHASE PRICE AND ANY APPLICABLE TAXES WILL BE REFUNDED. PLEASE ALLOW 4-6 WEEKS TO PROCESS YOUR REFUND.

1. This License Agreement applies to the one or more databases that your product may contain. We refer to these singly as a "Database" and together as the "Databases." Your product may thus include the "WBS Database" which contains worldwide background surface mapping data, the "Insight Database" which contains inland mapping data, or other Databases.
2. The Databases that your product may contain are licensed, not sold. We grant to you the nonexclusive, nonassignable right to use these Databases for supplemental navigation reference purposes, but only as long as you comply with the terms and conditions of this License Agreement. We reserve the right to terminate this license if you violate any aspect of this License Agreement. You are responsible for using official government charts and prudent navigation for safe travel.
3. The Databases housed in your product are protected by the copyright notices appearing on the product or its screen(s). You may NOT modify, adapt, translate, reverse engineer, decompile, disassemble, rent, lease, or resell any Database, and you may NOT create derivative works based upon any Database or its contents. Any unauthorized reproduction, use, or transfer of a Database may be a crime and may subject you to damages and attorney fees.
4. This License Agreement will terminate immediately without prior notice from us if you fail to comply with or violate any of the provisions of this Agreement. Upon termination, you will promptly return all products containing one or more Databases to us.
5. Prices and programs are subject to change without notice.
6. This License Agreement shall be governed by the laws of the State of Oklahoma and comprises the complete and exclusive understanding between you and us concerning the above subject matter.

Databases Limited Warranty

"We", "our", or "us" refers to Navico, the manufacturer of this product. "You" or "your" refers to the first person who purchases the product as a consumer item for personal, family, or household use. The Databases Limited Warranty applies to the one or more databases that your product may contain. We refer to each of these as a "Database" or together as the "Databases." Your product may thus include the "WBS Database" which contains worldwide background surface mapping data, the "Insight Database" which contains inland mapping data, or other Databases. We warrant to you that we have accurately compiled, processed, and reproduced the portions of the source material on which the Databases are based. However, we are under no obligation to provide updates to the Databases, and the data contained in the Databases may be incomplete when compared to the source material. WE MAKE NO EXPRESS OR IMPLIED WARRANTY OF ANY KIND ABOUT THE ACCURACY OF THE SOURCE MATERIAL ITSELF, INCLUDING BUT NOT LIMITED TO IMPLIED WARRANTIES OF MERCHANTABILITY OR FITNESS FOR A PARTICULAR PURPOSE.

If there is a defect in any Database, your exclusive remedy shall be, at our option, either a refund of the price you paid for the product containing the defective Database or a replacement of such product. WE WILL NOT UNDER ANY CIRCUMSTANCES BE LIABLE TO ANYONE FOR ANY SPECIAL, CONSEQUENTIAL, INCIDENTAL, OR OTHER INDIRECT DAMAGE OF ANY KIND. Some states do not allow the exclusion or limitation of incidental or consequential damages, so the above limitations or exclusions may not apply to you. This warranty does NOT apply in the following circumstances: (1) when the product has been serviced or repaired by anyone other than us; (2) when the product has been connected, installed, combined, altered, adjusted, or handled in a manner other than according to the instructions furnished with the product; (3) when any serial number has been effaced, altered, or removed; or (4) when any defect, problem, loss, or damage has resulted from any accident, misuse, negligence, or carelessness, or from any failure to provide reasonable and necessary maintenance in accordance with the instructions of the owner's manual for the product.

We reserve the right to make changes or improvements in our products from time to time without incurring the obligation to install such improvements or changes on equipment or items previously manufactured.

This warranty gives you specific legal rights and you may also have other rights which may vary from state to state.

Your remedies under this warranty will be available so long as you can show in a reasonable manner that the defect occurred within one (1) year from the date of your original purchase, and we must receive your warranty claim no later than 30 days after such 1-year period expires. Your claim must be substantiated by a dated sales receipt or sales slip.



LOWRANCE®