



5" – 7" GPS / Chart Plotter (FishFinder)

O·CHART 5(F) O·CHART 7(F)

2 in 1, 3 in 1 !

These combinations offer the advantage of having in one housing a GPS, a color Chart Plotter and a real 600 Watts Fishfinder (F-model).

No antenna cable, and power is supplied through an ingenious bracket equipped with waterproof connectors. Clic Clac, 3 seconds only to remove your O.Chart when necessary !



RADIO OCEAN

No need to mention ...

Present on the nautical market since 1936, the trademark RADIO OCEAN displays its latest innovations in GPS Chart plotter and GPS Chart plotter / FishFinder.

www.radio-ocean.com

distributed by **FURUNO**



5" GPS / Chart Plotter

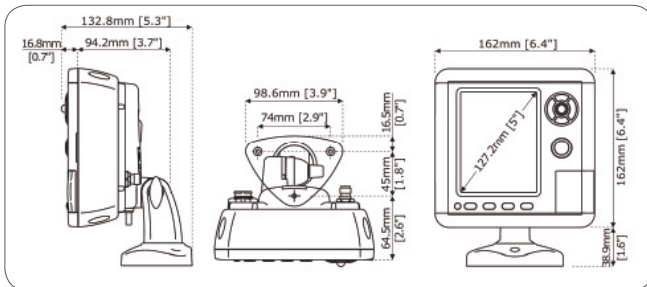
O·CHART5



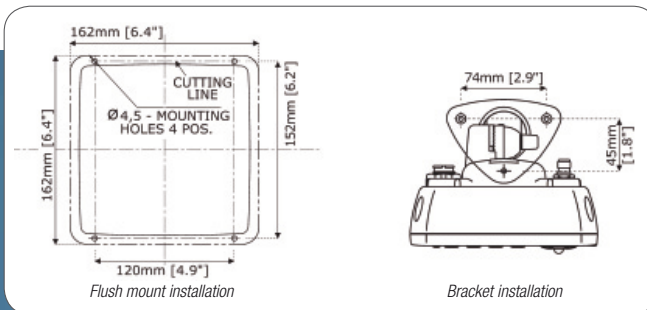
The O.CHART5 is definitely the best value for money on the market for a user friendly navigation.

Powered by the battery on board, this compact chart plotter offers a comfortable screen size and is readable even in direct sunlight.

Dimensions



Flush mount or bracket installation



Lockin-Lockout System

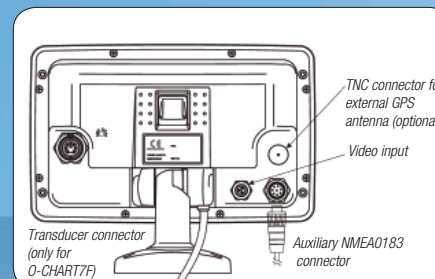
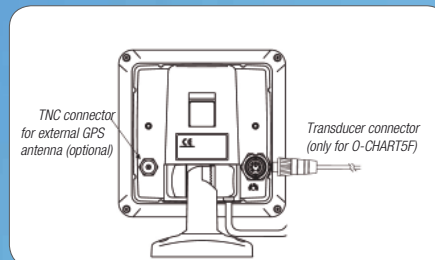
Clic Clac, 3 seconds only to remove your O.Chart when necessary ! single cable. It is provided with a protection against moisture. The rotating Lockin-Lockout system gathers power and NMEA sentences on one

Characteristics

- Anti-reflect LCD screen
- Readable in full sunlight
- Highly resistant and waterproof housing (0° to 50°C)
- Touchscreen buttons (Map Rotation - Zoom in/out)
- Flat flush mount
- Worldwide background map included
- Compatible C-Map MAX (SD)
- Quick disconnect bracket (tilt & rotate)
- Integrated GPS receiver and antenna (Waas/Egnos)
- Routes / Waypoints
- Power / Consumption
- NMEA0183 Inputs / Outputs
- Receiving Data
- Analog vidéo input (PAL, NTSC)
- Rolling Road

For your security, the O-chart can receive AIS targets from an external receiver (AIS100 & AIS 200, AIS CTRX, RO4800 for example).

Connectors



Simply connect a RO4800 VHF to replicate the AIS data on your O-Chart



Rolling Road page



GPS Status page



7" GPS / Chart Plotter



A flat screen, wide and bright, distributed by the No. 1 in navigation electronics, what could be more reliable?

... For nice trips at sea, it's fun for guaranteed!



With its wide, high resolution color screen, the GPS/Chart Plotter O.Chart 7 provides an exceptional picture quality.

OCHART5	OCHART7
5" QVGA	7" WVGA HD
320x240 pixels	800x480 pixels
X	X
X	X
X	X
X	X
X	X
X	X
X	X
25 / 500	50 / 10000
12 vdc / 600mA	12 vdc / 600mA
2 / 2	4 / 4
AIS and DSC(*)	AIS and DSC(*)
-	1
X	X

JEPPESSEN MARINE

JEPPESSEN IS A MARINE COMPANY

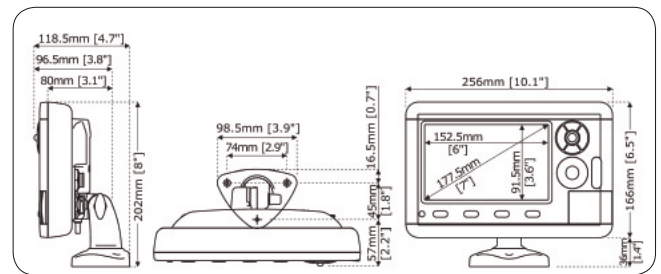
Marks & courants dynamiques

Alarme d'échouage

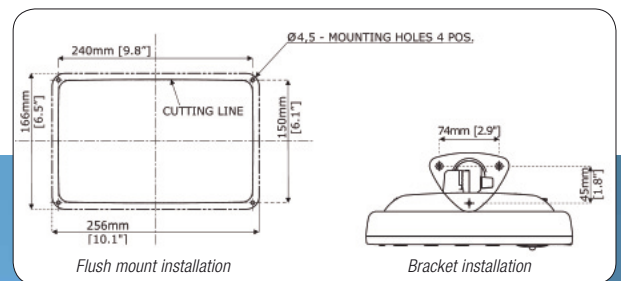
C-MAP
by JEPPESSEN

- **Guardian Alarm**, a dedicated function that scans the chart to detect automatically dangerous obstacles until 1 nm ahead. Depth can be adjusted from 0 to 99 meters.
- **Tides & Currents**, a dynamic simulation of tide and current data for your area of navigation.

Dimensions



Flush mount or bracket installation



(*) The waypoint sent by the VHF is shown on the chart plotter thanks to the DSC reception.

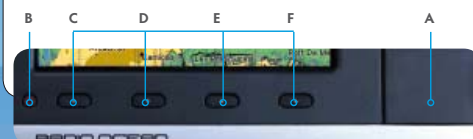


Simple to use

Keyboard ergonomics and intuitive software interface guarantee comfort and simplicity in use. Consulting maps, creating routes, navigating to a destination via specific waypoints or inserting a mark on the map will have no more secrets for you. Let your intuition guide you.



TOUCHES	NOMS	FUNCTIONS
1	MENU	Press to open the Settings menu
2	GOTO	Selects the main navigation functions to a Target
3	ENTER	Selects the desired option, confirms selection, creates Objects (Mark, Waypoint, MOB) and finds Information on Objects
4	ZOOM +/-	Shows more or less details of an area, by changing the chart scale and zooming in/out on your display
5	KeyBoard	Moves the cursor on the display, quickly and accurately. It also scrolls the desired option in the menu page(s)
6	CLEAR	Returns to the previous menu or leaves a menu, without making changes.
7	Zoom Slider	Used to change the chart scale : sliding up/down, the chart plotter recognizes a Zoom Out/In
8	Map Rotor	When Perspective View is set On/Off, the Map Rotor rotates the chart in the center of the screen/scrolls the chart
A	Waterproof Door	Push/Remove the SD card from C-Map by Jeppesen into the slot
B	Power	Turns the chart plotter On/Off or adjusts brightness and contrast
C		
D	Software Keys	Different functions according to the modes of operation : validate, erase, insert, change ...
E		
F		





5" & 7" GPS / Chart Plotter / FishFinder

O·CHART5F

O·CHART7F



The combined O.CHART5F and O.CHART7F complete the GPS / Chart Plotter range. Combined in the same housing, they offer the possibility to have a REAL FISHFINDER. The external wiring is limited to one cable for the multisensor and one for the power/data. All in one, the O.CHART5F and O.CHART7F are specially well suited for small boats where the available space is often limited.

Characteristics

- 50/200 kHz bi frequency
- 600 Watts rms power
- 600m maximum depth
- AIRMAR XID 8 pins transducer
- SOG, DPT & TMP data

Compatible Transducers

	4.006.0001 P58	Plastic - 8 pins - 600 Watts Transom Mount triducer multisensor Depth / Speed / Temperature functions		4.006.0003 P79	Plastic - 8 pins - 600 Watts In Hull transducer Depth function
	4.006.0002 P319	Plastic - 8 pins - 600 Watts Tru Hull transducer Depth function		4.006.0004 B744V	Bronze - 8 pins - 600 Watts True Hull triducer multisensor Depth / Speed / Temperature functions. Delivered with a fairing

Reading of the FishFinder page

The display on chart plotters shows a time histogram of the echoes received by the transducer. The sounder menu allows to adjust receiver sensitivity, depth range and scrolling speed of the Fish Finder display.

1 Warning Message

2 Echogram window It represents the image of the water underneath your boat, items appear as they pass under your transducer; the items on the right side of the screen are closer to you than those on the left.

3 Color Bar it shows the colors used in the Echogram to represent the echoes strength. The color on the top of the bar represents the maximum sonar strength.

4 Digital Depth Readout of the current bottom depth.

5 Water Temperature Readout of the current water temperature returned by the temperature sensor included into specific transducers.

6 Alarm Bar Bars showing the shallow water and deep water alarm values. The alarm is triggered when depth is outside the range.

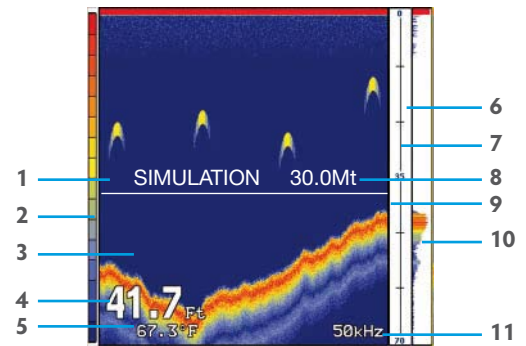
7 Depth ruler Vertical graduated bar. It is a scale which reflects the depth of the area being displayed.

8 Variable Depth Marker (VDM) Horizontal line on to the Echogram window with a depth label.

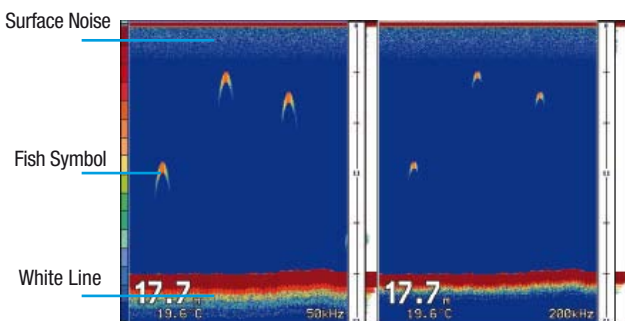
9 Zoom Bar Bar showing the portion of the Echogram currently represented in the zoomed window.

10 A-Scope : A real time representation of fish and bottom features passing through the beam of the transducer. It is drawn as horizontal lines whose length and hue is proportional to the sonar strength returned.

11 Operating Frequency Readout of the selected operating frequency.



Echogram reading



ALARMS

- **Shallow/Deep Water** Triggers an alarm when depth becomes shallower/deeper than the value set
- **High/Low Water Temperature** Triggers an alarm when the transducer reports a temperature above/below the value set.
- **Water Temperature Rate** Triggers an alarm when the transducer reports a temperature variation rate above the value set.
- **Fish Alarm** The options for Fish Alarm set the size of the fishes that, if detected by the unit, switches an alarm to sound. These options are: Off, Small, Medium, Big and Huge. The alarm sounds if the set size (or bigger) is detected.

Shop Stamp