



IONSERIES

MULTI-FUNCTION DISPLAYS

 **HUMMINBIRD®**

SIMPLY. CLEARLY. BETTER.

SIMPLY. CLEARLY. BETTER.

ION SERIES

ION Series Multi-Function Displays offer a multitude of technological possibilities. From our complete arsenal of leading-edge sonar to our high-definition radar and our full slate of cartography solutions, the choice is yours. Expandable Platform The ION10 Multi-Touch™ dominates the competition with high-speed Ethernet networking, wireless connectivity and full NMEA 0183/2000® support. From black box sonar and powerful radar to AutoPilot™ integration and even IP cameras, you can assemble the ultimate angling system. Cross Touch Interface Take command of your display like never before with Cross Touch™, exclusive to the ION and ONIX Series. Everything you can do with the touchscreen, you can also do with the touchpad—so rough conditions will never compromise your control. Browser Built-In Surf the web, monitor weather and stay connected—from the dock, offshore waters and everywhere in between thanks to the exclusive Humminbird® Internet Browser, standard on the ION Series.



> TWO MODELS TO CHOOSE FROM

With 10-inch and 12-inch models, find the ION Series Multi-Function Display that best matches your needs and boat dimensions. Seamlessly connect multiple head units throughout your vessel for complete command over the water.

> CROSS TOUCH™ INTERFACE

Take command of your display like never before with Cross Touch, exclusive to the ION and ONIX Series. Everything you can do with the touchscreen, you can also do with the touchpad—so rough conditions will never compromise your control.



Swipe two fingers down for instant access to your home screen.



Tap and type on the virtual keyboard to name waypoints, compose emails, and more.

MULTI-GESTURE CONTROL

Some touch interfaces limit you to finger pointing. Not this one. Multi-gesture capability lets you navigate menus and activate features with a tap, swipe or pinch. Cross Touch also minimizes false touches from splashing water.



HD 1024x768
BEST-IN-CLASS RESOLUTION

> INTUITIVE INTERFACE

The home screen is where settings, alarms, views, valuable tools and your favorite screen configurations reside. From currents to GPS data to sonar graphs, quickly and easily access what you need with a touch of the screen or keypad.



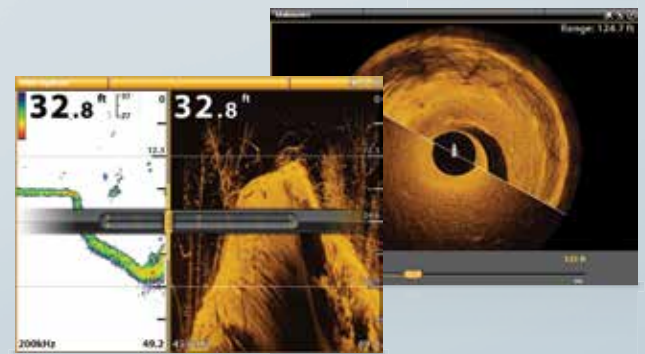
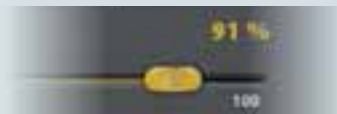
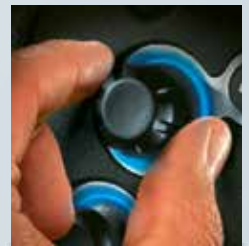
> INTERNET BROWSER BUILT-IN

Surf the web, monitor weather and stay connected—from the dock, offshore waters (up to 2 miles with the wireless antenna accessory) and everywhere in between thanks to the exclusive Humminbird Internet Browser, standard on the ION Series.



> QUICK MENUS

Your conditions and needs can change at a moment's notice. Your ION Series unit is already a step ahead. Adjust radar gain, sonar sensitivity or sonar range with a slide of your finger across the touchscreen or a spin of the speed dial located on the ION Series keypad.



Press and hold to mark waypoints.



Pinch to zoom in for a closer look at your sonar returns and charts.



Swipe and drag up to four panes to configure a custom preset view.



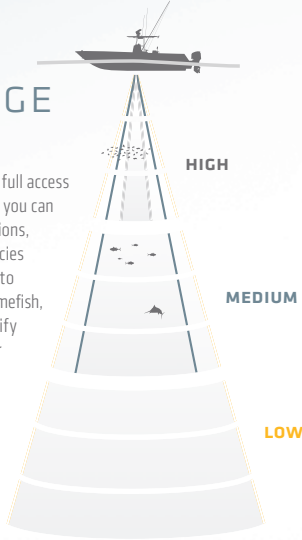
TECHNOLOGY

Build it and the trophies will come. ION Series Multi-Function Displays offer a multitude of technological possibilities. From our complete arsenal of leading-edge sonar to our high-definition radar to our full slate of cartography solutions, the choice is yours.



> EXCLUSIVE MULTI-RANGE CHIRP

Only Humminbird® CHIRP gives you full access to high, medium and low ranges, so you can adjust your frequency to sea conditions, your desired search area, or the species of fish you're after. You'll be able to distinguish between baitfish and gamefish, pinpoint steep drop-offs, and identify wrecks lying on the seabed. In order to view all three ranges, you'll need two CHIRP transducers, plus two SM3000 black boxes.



HIGH RANGE

130 KHZ TO 210 KHZ – UP TO 3,300 FEET

Identify baitfish and gamefish commonly found at shallower depths with a precise, high-frequency beam.



MEDIUM RANGE

85 KHZ TO 135 KHZ – UP TO 6,500 FEET

Find gamefish from tuna to swordfish at mid-range depths with this medium-frequency beam.



LOW RANGE

28 KHZ TO 65 KHZ – UP TO 10,000 FEET

Go all the way to the ocean floor to track bottom with the low-frequency beam.



> IMAGING SONAR

Amazing Humminbird® Imaging Sonar shoots high-frequency beams below the surface to reveal vegetation, bait fish and wrecks in crystal clarity. With three powerful solutions, you can canvas the lake from every angle—below the boat, on either side and in every direction.



360 IMAGING™

Revolutionary 360 Imaging offers a detailed, 360-degree view around your boat. Visualize it as a thin sonar wall extending 150 feet to either side of your vessel. This wall rotates to create a 300-foot circle, enabling you to see areas virtually impossible to reach with other types of sonar. And, because the sonar wall moves, you don't have to, so you can see where fish are before they see you. Transom Mount 360 Transducer required (AS 360 SSI).



SIDE IMAGING®

Gain a 180-degree side-to-side perspective on the world below the surface with remarkable Side Imaging. In an instant, the ultra-thin beam scans the area up to 240 feet to the left and right of your boat location—for total coverage of up to 480 feet. The return image for each slice is then added to the images taken immediately before and after to build an incredible view of the sea bottom.

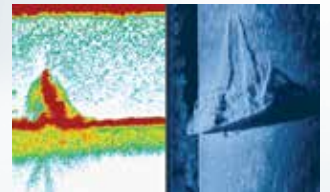


DOWN IMAGING®

Get a fish-eye's view of what's happening below your boat with Down Imaging. These incredible images are created with high-frequency sound waves emitted in ultra-thin slices. The sonar returns from these waves produce a "portrait." As you patrol the water, you'll watch fish, reefs and other underwater habitat pop with stunning detail.

SWITCHFIRE®/SIDE IMAGING

This view provides complete understanding of what, exactly, is going on below your boat. Quickly identify cover and structure with Side Imaging, while using SwitchFire® to locate and target fish. Together, they take the guesswork out of sonar fish-finding.



> ETHERNET SONAR MODULES

Get just the basics or go all in. Humminbird gives you the flexibility to choose the sonar configuration that's right for you with three black box solutions. Connect one or more of these saltwater-proof black boxes to your ION Series Multi-Function Display using your Ethernet network.

SM1000



2D SONAR



SM2000



2D + DI + SI SONAR



SM3000



BROADBAND CHIRP + 2D + DI + SI SONAR



> TRIFUEL CARTOGRAPHY

No one understands your mapping needs better than you. With groundbreaking TriFuel™ Cartography, the Humminbird ION Series delivers exclusive access to Navionics®, C-MAP® by Jeppesen® and Humminbird charts. World-base maps from all three chartmakers are built into your ION unit. For richer detail and advanced features, select the chart SD card for your region.



SWITCH ON THE FLY
Easily switch from Humminbird cartography to Navionics® to C-MAP® and vice versa.

HUMMINBIRD® AUTOCHART

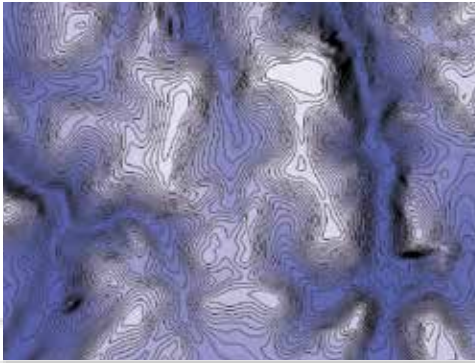
Leave no waters uncharted. New AutoChart™ Zero Line SD card gives you access to the zero lines for numerous bodies of water where you fish—the starting point for creating accurate, detailed maps of any uncharted waters. AutoChart's proprietary software uses your Humminbird's sonar returns and GPS to automatically build your charts. No subscriptions or hidden fees. No need to submit your data and wait weeks for a finished chart. AutoChart does it in just three simple steps—and your data is kept private, so your competition is none the wiser.

NAVIONICS®

Discover why boaters everywhere count on Navionics®. Each Navionics® Platinum+ and Gold chart cartridge offers unlimited online updates for one year, free of charge. You'll have the latest chart safety updates from government and private sources, as well as user-generated content from the Navionics® community.

C-MAP® BY JEPPESEN®

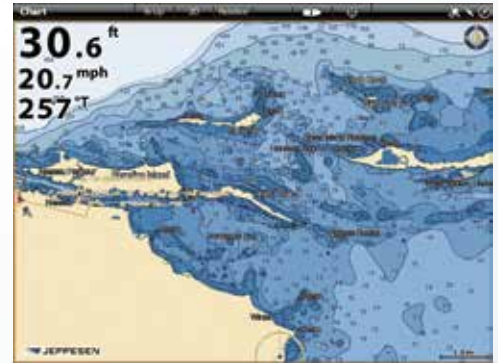
Navigate with total confidence. C-MAP® 4D charts provide brilliant 2D and 3D navigation reference—in both raster and vector formats. For three decades, C-MAP® by Jeppesen® has been providing electronic charts to millions of boats, yachts and ships. Trust the veracity of C-MAP® charts on your Humminbird display.



Amazing Detail - AutoChart gives you amazing detail and features including water level offset, highlight depth, mark waypoints and more.



Navionics® Platinum+ Charts with Turboview



C-MAP® 4D Vector Charts



AutoChart - When viewing your AutoChart maps on your PC, you will be able to see the underwater world in incredible 3D detail.



Navionics® Platinum+ Adjustable 3D Presentations

Navionics® Gold 6 HotMaps™ Premium



C-MAP® 4D Charts with satellite overlay

View Raster and Vector Charts Simultaneously

> AUTOPILOT

Never deviate from your route with the precise control and proven performance of your Humminbird Autopilot system. Easily navigate the SC 110 User Interface thanks to intuitive keys and menus, and a full-color, sunlight-readable display. The components of the Humminbird Autopilot system add up to superior course stability and steering performance, not to mention reduced fuel use. Combine them with a Humminbird navigation system for total authority on the water.



JOYSTICK
TC 110



COURSE COMPUTER
SCP 110



RUDDER
FEEDBACK UNIT
FB 30



FLUXGATE
COMPASS
FXC 110



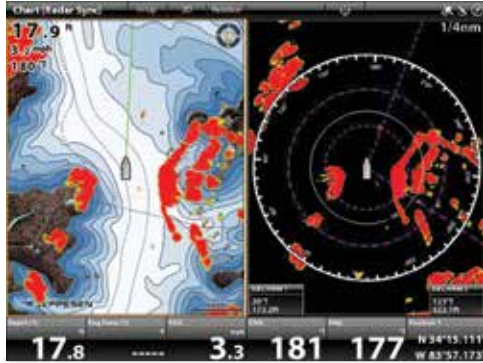
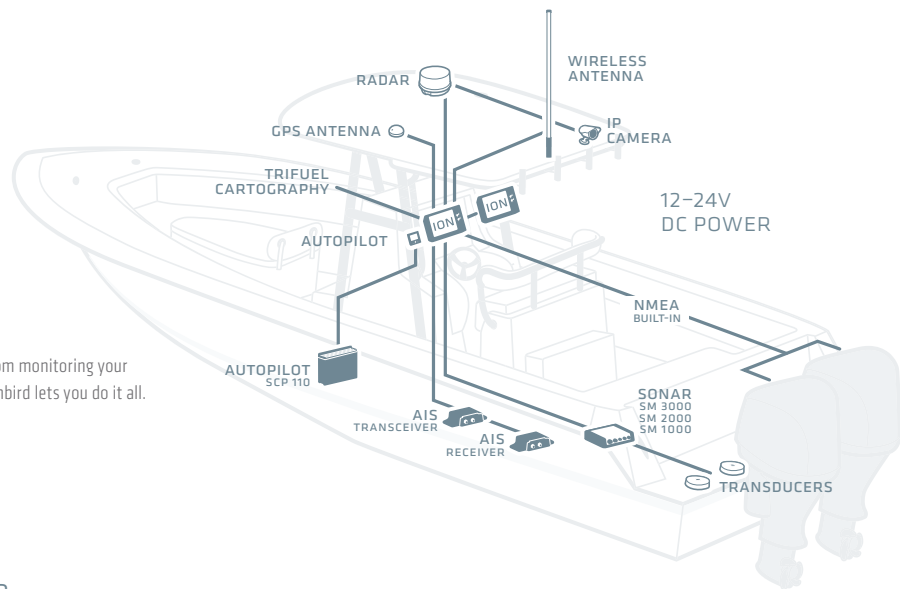
THREE-AXIS
HEADING SENSOR
HRS 1



PUMPS
SEASTAR AUTOPILOT PUMP

> ACCESSORIES

Link your ION Series Multi-Function Display with an ocean's worth of choices. From monitoring your surroundings and boat performance to putting your vessel on autopilot, Humminbird lets you do it all. The only limit is your imagination.



HD RADAR

Stay out of harm's way and anticipate where the fish are. Designed from an angler point of view, Humminbird radar's incredible target tracking lets you precisely locate and monitor everything from birds to ships to buoys. Advanced features range from dual guard zones to automatic gain/sea clutter control to sector blanking.



AIS MODULES

Never deviate from your route with the precise control and proven performance of your Humminbird Autopilot system. Easily navigate the SC 110 User Interface thanks to intuitive keys and menus, and a full-color, sunlight-readable display. Humminbird AIS technologies deliver peace of mind right out of the box. Bright LED indicators and high-visibility displays keep you informed and alert to your conditions. All AIS accessories feature rugged, saltwater-proof construction for years of safety and performance.



WIRELESS ANTENNA

Surf the web using the built-in browser on your ION Series unit. This -11dB gain antenna extends your wireless Internet access up to 2 miles offshore (line of sight, performance may vary based on conditions). For use in US and Canada only.

WIRELESS ANTENNA
HWA-11



NMEA 2000

Boat performance, weather or water conditions, make sense of it all. Plug your NMEA 2000® network backbone directly into your ION display. No adapters or black boxes required. Easily connect sensor after sensor to your vessel's Humminbird system. Bearing, depth, engine status, tank level, electrical—you name it, your ION Series unit can display it.

SALTWATER TRANSDUCERS

Humminbird is proud to offer Airmar® transducers. Durable, precise and innovative, these industry-leading transducers are available through your Humminbird dealer. For more information, talk to your dealer or visit airmartechology.com.



EXTERNAL GPS MODULES

Choose from three external GPS solutions. The AS GPS provides fast and precise position fixes accurate within 2.5 meters, even in lower signal areas. With an integrated heading sensor, the AS GPS HS lets you see compass information and your boat's orientation while moving or sitting still. For heading sensor only, choose the HRS1.




ORGANISATION

Advanced features demand equally advanced organisational tools. The Humminbird ION™ Series is full of special features designed to keep your display in order and your time on the water more efficient. To give you a sense of what's possible, we'll show you how to apply local and global settings, as well as mark waypoints.


> GLOBAL AND LOCAL SETTINGS

Make changes that apply to every screen on your ION Series unit and across the entire network (global setting)—or make tweaks that apply to an individual screen on an individual unit (local setting). It's yet another way Humminbird® lets you adapt your technology to your needs and conditions.



GLOBAL SETTINGS ON

Here we've made a 2D chart a global setting applied to every view within the ION Series unit and across the network. As you alternate between single-pane (left screen) and multi-pane (right screen) views, you'll see the same chart settings.

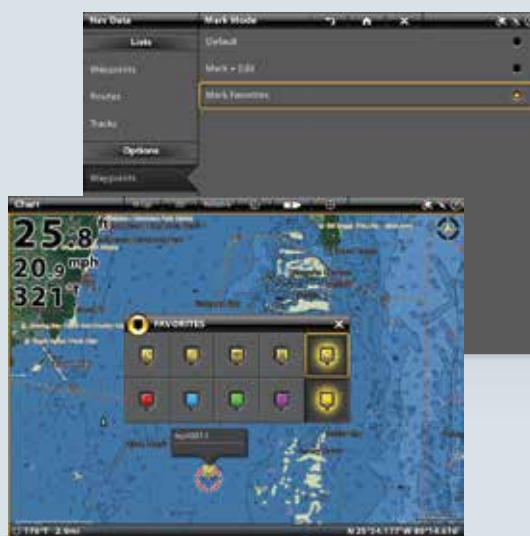


GLOBAL SETTINGS OFF

Here we've turned the global setting off, so we can make localized changes to the view. In this case, we've added a satellite overlay to the chart. This change only applies to this specific view within this ION unit.

> MARKING WAYPOINTS

Creating and organizing waypoints have never been simpler. Pre-select the color, shape and style of the waypoints that appear in your quick menu. When you find something of interest, tap the screen and choose the right waypoint for the occasion from the quick menu.

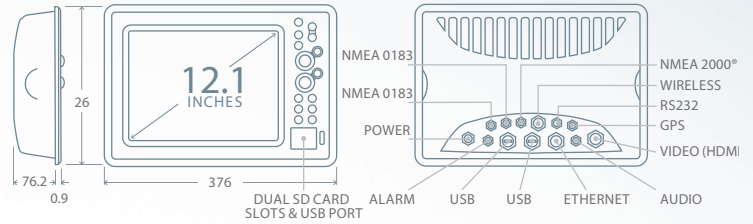


ION SERIES SPECIFICATIONS

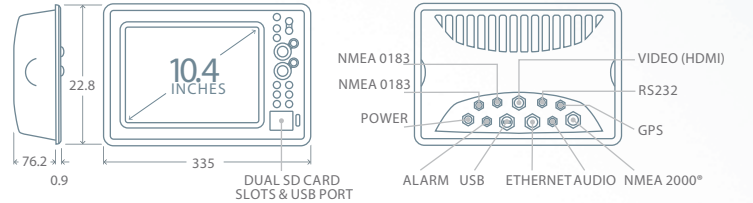


	ION 12	ION 10
Touch Screen	Multi-Gesturing	Multi-Gesturing
User Interface	Cross Touch	Cross Touch
Display Size	12.1" Diagonal	10.4" Diagonal
Display Pixel Matrix	1024H x 768V	1024H x 768V
Display Type	Color TFT	Color TFT
Display Colors/Grayscale	16.7 mm Colors	16.7 mm Colors
Sonar Optional	SM1000, SM2000, SM3000	SM1000, SM2000, SM3000
NMEA 0183/2000	Built-In	Built-In
Temperature	Optional	Optional
Backlight	LED	LED
Waterproof Class	IPX7	IPX7
Unit Size - Gimbale Mount	419mm W x 282mm H x 86mm D	381mm W x 254mm H x 86mm D
Unit Size - In-Dash Mount	376mm W x 26mm H x 0.9mm D	335mm W x 22.8mm H x 0.9mm D
Mounting Options	In-dash or Gimbale	In-dash or Gimbale
Transducer - Standard	N/A	N/A
Transducer Mounting - Standard	N/A	N/A
Cartography Optional	Humminbird TriFuel	Humminbird TriFuel
Power Input	10-32 VDC	10-32 VDC

ION 12

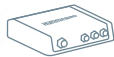


ION 10

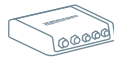


SONAR MODULES

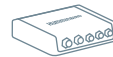
SM1000 2D SONAR



SM2000 2D + DI + SI SONAR



SM3000 BROADBAND CHIRP + 2D + DI + SI SONAR



	SM1000	SM2000	SM3000
Frequency	200/83/50 kHz	800/455/200/83/50 kHz	Low, Medium or High CHIRP Frequencies
Power Output	1000 Watts	2000 Watts	2000 Watts
Sonar	Digital Signal Processing	Digital Signal Processing, Down Imaging, Side Imaging and 360 Imaging	Digital Signal Processing, Down Imaging, Side Imaging and 360 Imaging
Communications	Ethernet	Ethernet	Ethernet
Target Separation	2 1/2 Inches	2 1/2 Inches	2 1/2 Inches
Depth Capability	1500 ft	3000 ft	10,000 ft

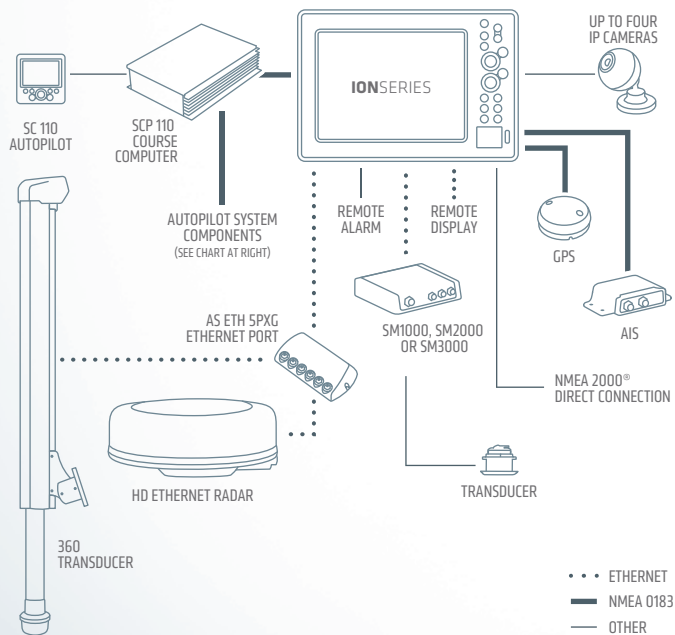
OPTIONAL ADD-ONS

360 Imaging	External GPS Receiver	AIS Compatibility
HD Radar	Compass	5-Port Expansion Module
NMEA 2000®	Heading Sensor	IP Marine Cameras (up to 4)
Minn Kota i-Pilot Link	Autopilot	Wireless Antenna Accessory

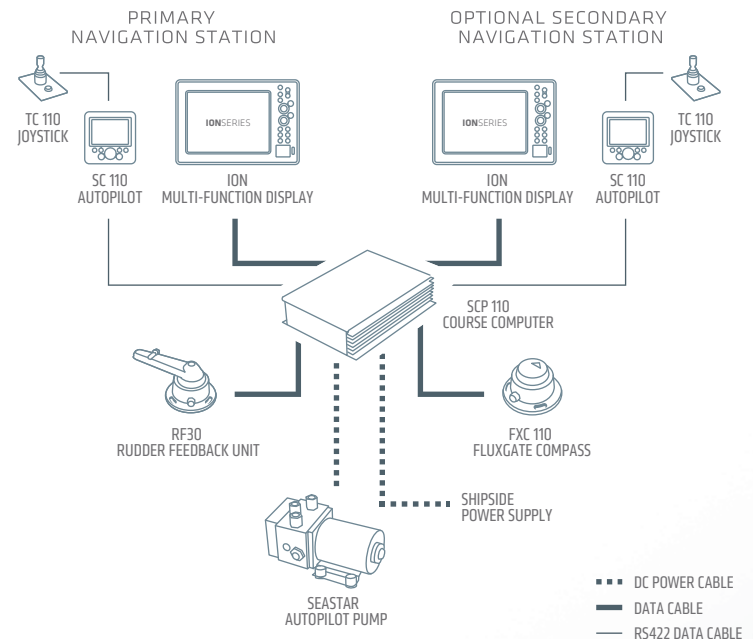
OPTIONAL CARTOGRAPHY

Humminbird® AutoChart™
Navionics® Gold™
Navionics® Platinum+
C-Map® 4-D by Jeppesen®

ION SYSTEM CONFIGURATION



AUTOPILOT SYSTEM CONFIGURATION



Down Imaging, Humminbird, Minn Kota, Side Imaging, and SwitchFire are registered trademarks of Johnson Outdoors Marine Electronics, Inc.
 360 Imaging, AutoChart, AutoChart Pro, Autopilot, Cross Touch, DualBeam PLUS, ION, ONIX, and TriFuel are trademarks of Johnson Outdoors Marine Electronics, Inc.
 Almar is a registered trademark of Almar Technology Corp. C-MAP and Jeppesen are registered trademarks of Jeppesen Marine, Inc.
 HotMaps is a trademark of Navionics, Inc. and Navionics S.p.A. Navionics is a registered trademark of Navionics, Inc. NMEA 2000 is a registered trademark of NMEA.

Specifications are subject to change without notice.

BLA
boatinglifestyleadventure



P.O. Box 7171, Hemmant, Queensland, Australia 4174

P: 1300 252 725
F: 1300 252 329
W: bla.com.au

Unit 2, 76 Porana Road, Glenfield, Auckland NZ 0627

P: (09) 442 1717
F: (09) 442 1718
W: bla.co.nz